



JUDGING PROGRAM

Red Dirt Agility Club of Oklahoma

AKC All-Breed Agility Trial in Shawnee, OK

Friday-Sunday, January 13, 14, 15, 2017

**Heart of Oklahoma
Exposition Center**
Fred Humphrey Arena
1700 W. Independence
Shawnee, OK 74802-1466

EVENT NUMBERS

2017688401, 2017688402, 2017688403

INDOORS – HEATED FACILITY WITH PACKED DIRT SURFACE

EVENT COMMITTEE EMERGENCY CONTACT – Kaye Kirk - 405.245.2099

Check-In

ARMBANDS NOT REQUIRED

Chapter 1, Section 19 of the Regulations for Agility Trials has been amended to eliminate the mandatory use of identifying stickers/armbands worn by agility exhibitors. RDAC is not requiring armband stickers.

Traditional check-in is not necessary. Please check in at the gate on the gate sheet prior to your class.

MEASURING



All agility dogs are required to have an Official Jump Height Card and must be able to present it if asked. Don't forget to bring your height card in case someone asks for it.

There will be not be a Measuring Official at this trial. Measurements will not be official -- it will only get you through the weekend. All exhibitors who checked on the entry form that their dog needs to be measured must be measured before running (unless you're jumping 24"). If you are entered in Novice or Open, you do not have to get there early to be measured. The judges will do measurements before either Novice or Open.

It is the exhibitor's responsibility to have their dog measured prior to running.

CONCESSIONS!

**Concessions will be available Saturday and Sunday during lunch hours.
Hours will be posted during the trial.**

Both fast food and restaurants are located within easy driving distance. **No outside food or drink is allowed on Saturday or Sunday.** Your cooperation is greatly appreciated.

MOVE-UPS

Be sure to let the trial secretary know if you've earned a new title since you entered the trial so your dog can be moved up!



Pre-trial move-ups must be submitted to the trial secretary via email **no later than 6:00 PM Monday, January 9.** **Day-to-Day Move-Ups are permitted** if you fill out a move-up form (available at the check-in table) and give it to the trial secretary at any time, but no later than 20 minutes after the last dog crosses the finish line on Friday for a Saturday move-up or on Saturday for a Sunday move-up.



Arrival & Setup

Set up is not allowed on Thursday, January 12.

Exhibitors are allowed to set up beginning at 1:00 pm on Friday, 7:30 am Sat, and 6:30 am Sun. **The facility WILL NOT be available to exhibitors prior to Friday afternoon.**

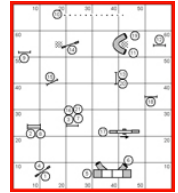
**RED DIRT AGILITY CLUB...
FIND US ON FACEBOOK**



<http://tinyurl.com/mx9d5tg>

Running Order & Course Maps

The judges will supply course maps. Please take **ONE** copy of the map for the courses you are running so we will have sufficient copies for every exhibitor. Course maps and running orders will be posted in a prominent area. Running orders will also be posted at the gate for your convenience in determining where you are located in the running order.



WANT TO HELP???

We wish to thank all those who have volunteered to help at this trial! Volunteers will receive a token that can be used for the concession stand and tickets to the Workers' Raffle.

If you would like to help, please contact one of our Volunteer Contacts: Priscilla Martin - pmcreations@att.net or Ashley Bradbeary - ashley.bradbeary@yahoo.com

SCHEDULE YOURSELF: Fill in your name in some time slots on our Volunteer Google Doc:

<http://tinyurl.com/m7sr3tw>

To edit on an iPhone/iPad, you must first download the FREE "Google Sheets" App from the Apple App Store.

Please visit the Red Dirt Agility Club Hospitality booth. Helpers will be there to answer any questions you may have. We will also be selling Red Dirt t-shirts!

Dogs May Not Be Left In the Building Overnight.



DOG PARK!

The Expo center has two dog parks on site for your Fido's convenience! Please be sure you pick up after your dog on the Expo grounds (and at the local hotels) and please abide by all posted rules at the dog park!

RESTAURANTS

There are two good restaurants just down the street from the Expo, one is Abuleta's Mexican Grill and the other Bandanna Reds (formerly Jay's Steakhouse).

If you head out east of the Expo on W. Independence St. and then north on Kickapoo all the way up to I-40 you will be in the vicinity of the Shawnee Mall with all the typical chain restaurants like Starbucks, Golden Corral, IHOP, Chilis, Red Lobster and the Santa Fe Cattle Co, plus the usual fast food restaurants Pizza Hut, Taco Bell, KFC, etc.

Check out some of the local establishments including the new Bricktown Brewery, Van's Pig Stand, Maple Garden, Sunrise Chinese and the Phoenix Asian Dinner.

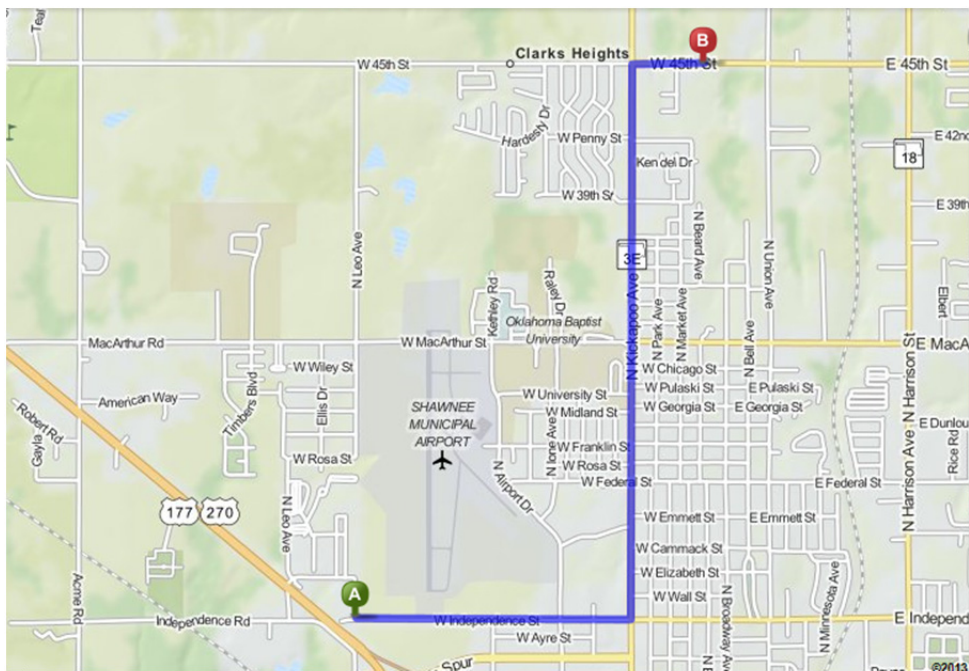
Veterinarians (On Call)

VETERINARY EMERGENCY CONTACT INFO

Northside Veterinary Hospital
121 W. 45th, Shawnee, OK 74804
405-273-3700

FROM SHOW SITE (A) TO VET'S OFFICE (B) - 3.2 Miles – 10 Minutes

1. Head **east** on **W Independence St** toward **N Pottenger St** .0.5 mi
2. Take the 3rd left onto **N Kickapoo St** .2.0 mi
3. Turn right onto **W 45th St** - Destination will be on the right .0.3 mi





Red Dirt Agility Club of Oklahoma JUDGING SCHEDULE

ESTIMATED TIMES/RUNNING ORDER:

Class Counts Are Contingent On Move-Ups Not Yet Received.

PLEASE CHECK YOUR RUNNING ORDER AND JUMP HEIGHTS CAREFULLY

**PLEASE NOTIFY GATE STEWARD OF ANY CONFLICTS.
CONFLICTS WILL BE HANDLED IF/WHEN THEY OCCUR.**

ALL TIMES (except for the first starting time each day) ARE ESTIMATES.

TIMES ARE LISTED AS A COURTESY ONLY TO GIVE COMPETITORS AN IDEA OF WHEN THE CLASS WALK-THRU COULD BEGIN.

Neither the Club nor the Judges will be responsible for the start times. Please plan your arrival accordingly.

Running Order, Friday, January 13, 2017 (211 Total Runs)

Judge: Candy Nettles

Ring 1		Ring 2	
APPROX. TIME	Briefing and Walk-Thru at 2:40 p.m.; Judging starts at 3:00 p.m.	APPROX. TIME	Briefing and Walk-Thru after conclusion of STD; Judging starts at approximately 5:30 p.m.
RING 1 EXC/MAS STD	Briefing/Walk/Run 53 Dogs: 4"(1), 8"(9); 12"(17), 16"(26) Walk/Run 52 Dogs: 20"(41); 24"(11)	RING 2 EXC/MAS JWW	Briefing/Walk/Run 55 Dogs: 4"(1), 8"(9); 12"(19), 16"(26) Walk/Run 51 Dogs: 20"(39); 24"(12)

Running Order, Saturday, January 14, 2017 (396 Total Runs)

Ring 1 – Candy Nettles, Judge		Ring 2 – Gene Downing, Judge	
APPROX. TIME	Briefing and Walk-Thru at 8:40 a.m.; Judging starts at 9:00 a.m.	APPROX. TIME	Briefing and Walk-Thru at 8:40 a.m.; Judging starts at 9:00 a.m.
9:00 AM	EX/MAS FAST Run 45 dogs; 8"(3); 12"(9), 16"(12), 20"(19), 24"(2) COURSE CHANGE	9:00 AM	OPEN/NOVICE FAST** Run 7 Open dogs; 16"(2), 20"(3), 24"(2) Run 22 Novice dogs; 8"(1); 12"(0), 16"(8), 20"(13) COURSE CHANGE
10:00 AM	EX/MAS STD; Walk/Run 33 dogs; 4"(1), 8"(12); 12"(20)	9:45 AM	EX/MAS JWW; Walk/Run 45 dogs; 16"(32), 24"(13)
10:55 AM	EX/MAS STD; Walk/Run 42 dogs; 16"(30), 24"(12)	10:45 AM	EX/MAS JWW; Walk/Run 43 dogs; 20"
12:00 PM	EX/MAS STD; Walk/Run 45 dogs; 20" COURSE CHANGE	11:45 AM	EX/MAS JWW; Walk/Run 36 dogs; 4"(1), 8"(12); 12"(23) COURSE CHANGE
1:25 PM	OPEN STD; Walk/Run 16 dogs; 8"(1); 12"(2), 16"(6), 20"(7) COURSE CHANGE	12:50 PM	OPEN JWW; Walk/Run 16 dogs; 8"(1); 12"(3), 16"(3), 20"(9) COURSE CHANGE
2:15 PM	NOVICE STD; Walk/Run 23 dogs; 8"(1); 12"(3), 16"(3), 20"(15), 24"(1)	1:40 PM	NOVICE JWW; Walk/Run 23 dogs; 8"(1); 12"(2), 16"(4), 20"(15), 24"(1)

****NOTE: Per new FAST rules effective January 3, 2017, the Open and Novice FAST courses will be nested. Both walk at the same time. A "Send" for each level will be marked on the course. Open runs first followed immediately by Novice – no walk thru or course build in between. Novice FAST will have 12 weave poles.**

A LUNCH BREAK CAN BE TAKEN AT JUDGES' DISCRETION; WALK THRUS CAN BE SPLIT AT JUDGE'S DISCRETION

GO TO WWW.NTXAGILITY.COM FOR COMPLETE RESULTS AFTER THE TRIAL

Running Order, Sunday, January 15, 2017 (462 Total Runs)

PREMIER JWW IS SPLIT WITH LARGE DOGS RUNNING FIRST TO HELP AVOID CONFLICTS WITH T2B

Ring 1 – Gene Downing, Judge		Ring 2 – Candy Nettles, Judge	
APPROX. TIME	Briefing and Walk-Thru at 7:40 a.m.; Judging starts at 8:00 a.m.	APPROX. TIME	Briefing and Walk-Thru at 7:40 a.m.; Judging starts at 8:15 a.m.
8:00 AM	T2B; Run 75 dogs; 4"(1), 8"(3); 12"(12), 16"(18), 20"(35), 24"(6) COURSE CHANGE	8:15 AM	PREM JWW; Run 15 dogs; 20"(13), 24"(2)
9:30 AM	EX/MAS STD; Walk/Run 36 dogs; 4"(1), 8"(15); 12"(20)	8:30 AM	PREM JWW; Walk/Run 18 dogs; 8"(4); 12"(4), 16"(10) COURSE CHANGE
10:30 AM	EX/MAS STD; Walk/Run 41 dogs; 16"(29), 24"(12)	9:15 AM	EX/MAS JWW; Walk/Run 42 dogs; 16"(29), 24"(13)
11:35 AM	EX/MAS STD; Walk/Run 43 dogs; 20" COURSE CHANGE	10:10 AM	EX/MAS JWW; Walk/Run 41 dogs; 20"
12:55 PM	PREM STD; Walk/Run 32 dogs; 8"(6); 12"(2), 16"(9), 20"(12), 24"(3) COURSE CHANGE	11:05 AM	EX/MAS JWW; Walk/Run 40 dogs; 4"(1), 8"(16); 12"(23) COURSE CHANGE
1:55 PM	OPEN STD; Walk/Run 13 dogs; 8"(1); 12"(2), 16"(3), 20"(7) COURSE CHANGE	12:15 AM	OPEN JWW; Walk/Run 16 dogs; 8"(1); 12"(3), 16"(2), 20"(10) COURSE CHANGE
2:45 PM	NOVICE STD; Walk/Run 25 dogs; 8"(1); 12"(2), 16"(5), 20"(16), 24"(1)	1:05 PM	NOVICE JWW; Walk/Run 25 dogs; 8"(1); 12"(1), 16"(6), 20"(16), 24"(1)

A LUNCH BREAK CAN BE TAKEN AT JUDGES' DISCRETION; WALK THRUS CAN BE SPLIT AT JUDGE'S DISCRETION

GO TO WWW.NTXAGILITY.COM FOR COMPLETE RESULTS AFTER THE TRIAL

MOTEL/RV PARK INFORMATION

NOTE: The club cannot guarantee that the hotels/motels listed below accept dogs. Please check regarding rates and dog acceptance policy when making reservations. A pet deposit *may* be required. Please check with the hotel for policies and restrictions.

Please inform management of your dogs when you book reservations and when you register. Motel dog regulations and fees may change without notice. The club cannot be responsible for any changes.



AREA ACCOMMODATIONS

Pet friendly accommodations in the Shawnee area.

La Quinta Shawnee 5401 Enterprise Court, Shawnee, OK 74804	(405) 275-7930
Motel 6, 4981 North Harrison Street, Shawnee, OK 74804	(405) 275-5310
Super 8, I-40 & Hwy 18, Shawnee, OK 74802	(405) 275-0089
Colonial Inn, 4700 N. Harrison, Shawnee, OK 74804	(405) 878-0120
American Inn, 5501 N. Harrison, Shawnee, OK 74804	(405) 273-2000
Sheraton Hotel, 5750 Will Rogers Rd, Midwest City, OK 73110	(405) 455-1800
Hawthorn Suites, 5701 Tinker Diagonal, Midwest City, OK 73110	(405) 737-7777
Super 8, 6166 Tinker Diagonal, Midwest City, OK 73110	(405) 732-3800
Candlewood Suites Midwest City, 5300 Main Street, Del City, OK 73115	(405) 604-5300
(Check with hotel for discounted pet fee)	

PLEASE KEEP DOGS QUIET AND PICK UP AFTER THEM
Help us keep our motels by acting responsibly!

RV PARKING

[Heart of Oklahoma Expo RV Park](#) - Highway 177 & Leo, Shawnee, OK..... 405-275-7020

The park features 284 full-service hook ups and 500 additional limited service spaces. The park also features recently remodeled comfort stations with laundry and shower facilities. Rate: \$25/night

Exhibitors are expected to maintain hotel premises and their dogs in a quiet, clean and well-kept manner and for cleaning up after their dogs immediately on hotel/motel and show grounds. Motels/hotels require that dogs be crated when unattended; no bathing or grooming of dogs in guest rooms. Exhibitors/handlers are responsible for any damages to motels/hotels or the event site and may result in disciplinary action by the Trial Committee. Entries may be refused in the future for previous misuse of the motel facilities.

Complaints lodged against any exhibitor will be under the auspices of our Trial Committee and reported to the AKC. This is an AKC-supported measure.

PLEASE REMEMBER: Hotels do not have to allow us to keep our dogs in the rooms. We are all responsible for insuring future pet acceptance at our favorite hotels. Please clean up after your dogs (inside and outside), keep them quiet so as not to disturb other guests, and generally be considerate of others. We all want to continue to have nice places to stay when we travel with our dogs.

