



JUDGING PROGRAM
SCHIPPERKE CLUB OF AMERICA
AKC All-Breed Agility Trial in McKinney, TX

FRIDAY, SATURDAY, SUNDAY
March 31, April 1, 2, 2017

MYERS PARK & EVENT CENTER
7117 COUNTY ROAD 166
MCKINNEY, TX

EVENT NUMBERS
2017177213, 2017177214, 2017177215

INDOOR FACILITY WITH PACKED DIRT SURFACE

EVENT COMMITTEE EMERGENCY CONTACT – LEZLIE HALL - 214-763-1132

Check-In

ARMBANDS NOT REQUIRED

Chapter 1, Section 19 of the Regulations for Agility Trials has been amended to eliminate the mandatory use of identifying stickers/armbands worn by agility exhibitors. SCA is not requiring armband stickers.

Traditional check-in is not necessary. Please check in at the gate on the gate sheet prior to your class.

MEASURING



An AKC Rep is scheduled to be at the trial and will be available to measure while she's there. When she's not present, one of the judges can measure your dog, which will be an unofficial measurement only good for the weekend.

ALL dogs (regardless of height) without a valid Jump Height Card or Yellow "Temporary Measurement" Form (for dogs under 2 years old) must be measured before their first run of the weekend. Forms will be available at the check-in table. Please fill out a form before requesting to be measured.

If you already have a permanent height card, be sure to have it with you at the trial in case you are asked for it.

It is the exhibitor's responsibility to have their dog measured prior to running.

MOVE-UPS

Be sure to let the trial secretary know if you've earned a new title since you entered the trial so your dog can be moved up!



Email: ntxagility@verizon.net

Pre-trial move-ups must be submitted to the trial secretary via email **no later than 6:00 PM Monday, March 27, 2017.** **Day-to-Day Move-Ups are permitted at the trial** if you fill out a move-up form (available at the check-in table) and give it to the trial secretary at any time, but no later than 20 minutes after the last dog crosses the finish line on Friday for a Saturday move-up or on Saturday for a Sunday move-up.



Arrival & Setup

Set up is NOT allowed on Thursday.

Exhibitors are allowed to set up Friday at 7:30 am and on Sat & Sun at 6:30 a.m.

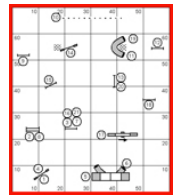
CONCESSIONS

There WILL NOT be a food vendor at the trial. Volunteers working 2 or more classes will receive lunch.

Please feel free to bring your own food and drinks. There are fast food places nearby.

Running Order & Course Maps

The judges will supply course maps. Please take **ONE** copy of the map for the courses you are running so we will have sufficient copies for every exhibitor. Course maps and running orders will be posted in a prominent area. Running orders will also be posted at the gate for your convenience in determining where you are located in the running order.



WANT TO HELP???

We Need You! Please!

Agility trials cannot survive without volunteers. Please consider helping! **Volunteers working 2 or more classes will receive lunch.**

SCHEDULE YOURSELF: Fill in your name in some time slots on our Volunteer Google Doc:

<http://tinyurl.com/SCAVolunteers>

If you have questions about volunteering, please contact our Volunteer Contact: Helen Chen-Rhodes at Sleddog5@sbcglobal.net

To edit the Google Doc on an iPhone/iPad, you must first download the FREE "Google Sheets" App from the Apple App Store.

Dogs May Not Be Left In the Building Overnight.

Veterinarians (On Call)

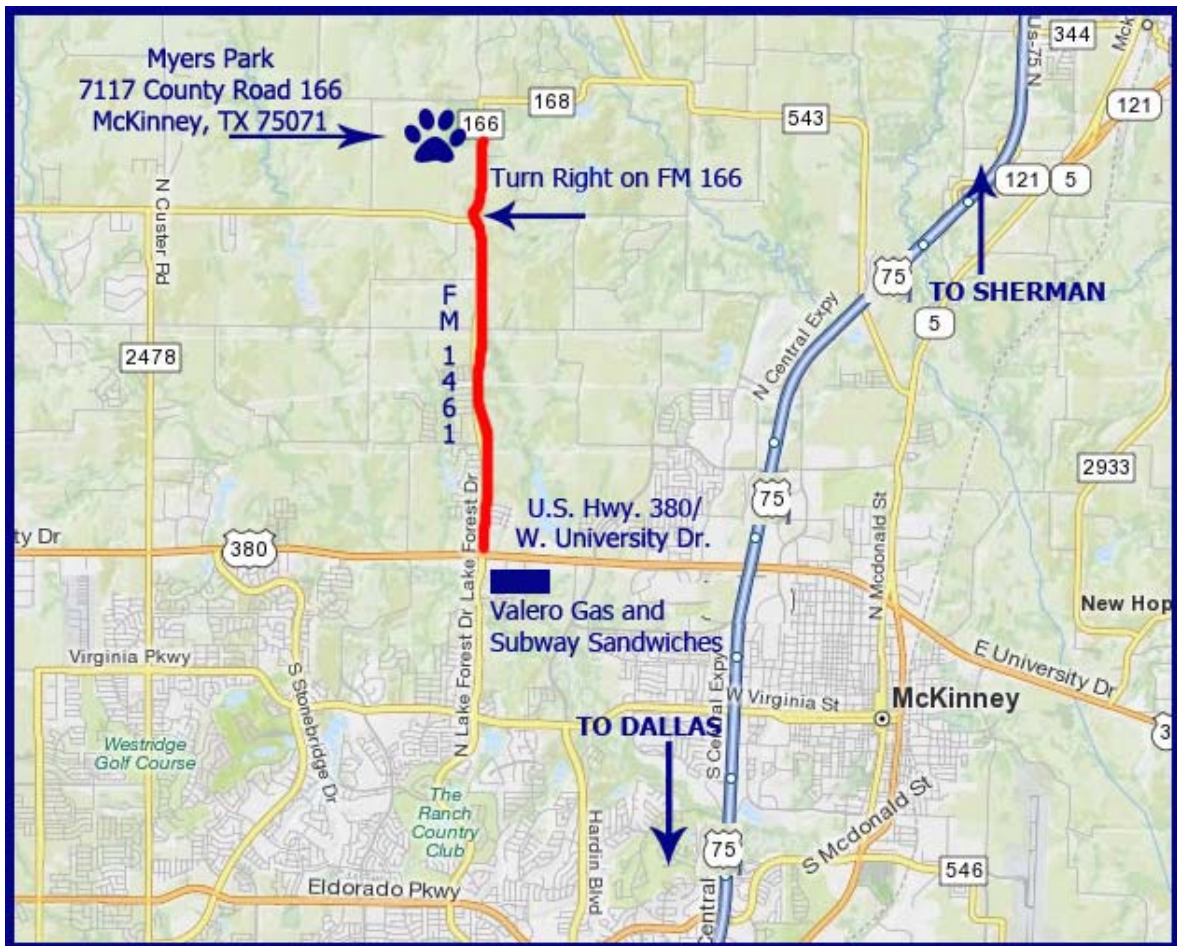


McKinney Animal Hospital
4630 W Eldorado Pkwy McKinney, TX
972.548.0749
M-F 7AM-6PM
Sat 8 AM-12PM

Emergency Animal Hospital of Collin County
10225 Custer Rd, Plano, TX
214.547.9900
M-Th 6PM-6AM
Fri. 6 PM-12 AM
Sat-Sun 12AM-12 AM (24 hr.)

THE TRIAL SITE

The town of McKinney is about 33 miles northeast of downtown Dallas on U.S. 75/North Central Expressway. From the north or south: On U.S. 75, take the U.S. 380 exit and go west about 2.5 miles to FM 1461. Turn right (north) on FM 1461 and travel approximately 2.8 miles to County Road 166. Turn right (north) on County Road 166 and go about 0.8 miles (8/10 of a mile) to the site which is on the left.



GO TO WWW.NTXAGILITY.COM FOR COMPLETE RESULTS AFTER THE TRIAL



SCHIPPERKE CLUB OF AMERICA

TIMES/RUNNING ORDER: Please notify the Gate Stewards of any running conflicts.
Class Counts Are Contingent On Move-Up Changes Not Yet Received.
 Rings will run concurrently.
PLEASE CHECK YOUR RUNNING ORDER AND JUMP HEIGHTS CAREFULLY

ALL TIMES (except for the starting times each day) ARE ESTIMATES.

TIMES ARE LISTED AS A COURTESY ONLY TO GIVE COMPETITORS AN IDEA OF WHEN THE CLASS WALK-THRU COULD BEGIN.
 Neither the Club nor the Judges will be responsible for the start times. Please plan your arrival accordingly.

Running Order, Friday, March 31, 2017 (312 Total Runs)

Ring 1 – Alan Arthur, Judge		Ring 2 – Karen Couch, Judge	
APPROX. TIME	Briefing and Walk-Thru (ALL FAST) at 8:40 am; Judging Starts at 9:00 am	APPROX. TIME	Briefing and Walk-Thru at 8:40 a.m. Walk-Thru for 4"-16" Begins at 8:10 am after 16" completes FAST
9:00 am	**Exc/Mas FAST-Run 20 dogs: 8"(3), 12"(1), 16"(2), 20"(9), 24"(5) followed immediately by **Open FAST – Run 12 dogs: 8"(3), 12"(1), 16"(2), 20"(5), 24"(1) followed immediately by **Novice FAST – Run 17 dogs 8"(3), 12"(2), 16"(4), 20"(5), 24"(3) - Course Change	9:25 am	T2B-Run 16 dogs: 4"(1), 8"(7), 12"(1), 16"(7)
		9:40 am	T2B Walk/Run 15 dogs: 20"(10), 24"(5) Course Change
10:05 am	Exc/Mas Standard-Walk/Run 16 dogs: 4"(4), 8"(10), 12"(2)	10:25 am	Exc/Mas JWW - Walk/Run 24 dogs: 16"(11), 24"(13)
10:40 am	Exc/Mas Standard- Walk/Run 22 dogs: 20"	11:00 am	Exc/Mas JWW-Walk/Run 18 dogs: 4"(4), 8"(10), 12"(4)
11:25 am	Exc/Mas Standard- Walk/Run 23 dogs: 16"(9), 24"(14); Course Change	11:35 am	Exc/Mas JWW-Walk/Run 22 dogs: 20" Course Change
12:25 pm	Premier STD – Walk/Run 17 dogs: 8"(3), 12"(1), 16"(3), 20"(6), 24"(4) Course Change	12:30 pm	Open JWW – Walk/Run 15 dogs: 8"(2), 12"(2), 16"(4), 20"(4), 24"(3) Course Change
1:15 pm	Open Standard - Walk/Run 18 dogs: 8"(1), 12"(3), 16"(6), 20"(5), 24"(3) Course Change	1:20 pm	Novice JWW - Walk/Run 23 dogs: 8"(4), 12"(3), 16"(7), 20"(5), 24"(4) Course Change
2:10 pm	Novice Standard - Walk/Run 18 dogs: 8"(4), 12"(1), 16"(5), 20"(4), 24"(4)	2:15 pm	Premier JWW – Walk/Run 16 dogs: 8"(3), 12"(1), 16"(3), 20"(6), 24"(3)

Running Order, Saturday, April 1, 2017 (483 Total Runs)

Ring 1 – Karen Couch, Judge		Ring 2 – Alan Arthur, Judge	
APPROX. TIME	Briefing and Walk-Thru at 7:40 am (EXC/MAS FAST); Judging Starts at 8:00 am	APPROX. TIME	Briefing and Walk-Thru at 7:40 a.m. Walk-Thru for 4"-16" Begins at 8:20 am after 16" completes FAST
8:00 am	**Exc/Mas FAST-Run 36 dogs: 8"(3), 12"(4), 16"(10), 20"(12), 24"(7) No Course Change	8:35 am	T2B-Run 21 dogs: 4"(1), 8"(7), 12"(4), 16"(9)
8:35 am	WALK OPEN & NOV FAST – 34 Dogs **Open FAST – Run 14 dogs; 4"(1), 8"(2), 12"(2), 16"(2), 20"(6), 24"(1) followed immediately by **Novice FAST – Run 20 dogs 8"(4), 12"(3), 16"(5), 20"(5), 24"(3) - Course Change	8:55 am	T2B Walk/Run 26 dogs: 20"(20), 24"(6) Course Changes
9:40 am	Exc/Mas Standard-Walk/Run 30 dogs: 4"(5), 8"(15), 12"(10)	9:50 am	Exc/Mas JWW - Walk/Run 42 dogs: 16"(24), 24"(18)
10:35 am	Exc/Mas Standard- Walk/Run 37 dogs: 20"	10:45 am	Exc/Mas JWW-Walk/Run 33 dogs: 4"(3), 8"(17), 12"(13)
11:35 am	Exc/Mas Standard- Walk/Run 43 dogs: 16"(24), 24"(19); Course Change	11:35 am	Exc/Mas JWW-Walk/Run 38 dogs: 20" Course Change
1:00 pm	Premier STD – Walk/Run 28 dogs: 8"(3), 12"(2), 16"(7), 20"(12), 24"(3) Course Change	12:45 pm	Open JWW – Walk/Run 21 dogs: 4"(1), 8"(2), 12"(2), 16"(7), 20"(6), 24"(3) Course Change
1:55 pm	Open Standard - Walk/Run 20 dogs: 8"(1), 12"(2), 16"(8), 20"(7), 24"(2) Course Change	1:40 pm	Novice JWW - Walk/Run 21 dogs: 8"(3), 12"(5), 16"(5), 20"(6), 24"(2) Course Change
2:55 pm	Novice Standard - Walk/Run 24 dogs: 4"(1), 8"(4), 12"(5), 16"(4), 20"(7), 24"(3)	2:30 pm	Premier JWW – Walk/Run 29 dogs: 8"(5), 12"(3), 16"(7), 20"(9), 24"(4)

**NOTE: Per new FAST rules effective January 3, 2017, All FAST courses (Exc/Mas, Open, Novice) will be nested. On Friday, all levels of FAST walk, then run with no additional walk-thru. On Saturday and Sunday, because of the number of entries, Exc/Mas will walk/run first. Open/Novice will walk together after Exc/Mas FAST has concluded. There will not be a course build in between. A "Send" for each level will be marked on the course. Open will be immediately followed by Novice – no walk thru or course build in between Open and Novice. Novice FAST will have 12 weave poles. It is not required that you complete the weaves in FAST; you just won't get the points.

Running Order, Sunday, April 2, 2017 (420 Total Runs)

Ring 1 – Alan Arthur, Judge		Ring 2 – Karen Couch, Judge	
APPROX. TIME	Briefing and Walk-Thru at 7:40 am (EXC/MAS FAST); Judging Starts at 8:00 am	APPROX. TIME	Briefing and Walk-Thru at 7:40 a.m. Walk-Thru for 4"-16" Begins at 8:20 am after 16" completes FAST
8:00 am	**Exc/Mas FAST-Run 36 dogs: 8"(4), 12"(4), 16"(9), 20"(12), 24"(7) No Course Change	8:35 am	T2B-Run 26 dogs: 4"(2), 8"(7), 12"(7), 16"(10)
8:35 am	WALK OPEN & NOV FAST – 27 Dogs **Open FAST – Run 13 dogs: 4"(1), 8"(2), 12"(1), 16"Alan (2), 20"(6), 24"(1) followed immediately by **Novice FAST – Run 14 dogs 8"(4), 12"(1), 16"(3), 20"(3), 24"(3) - Course Change	9:00 am	T2B Walk/Run 23 dogs: 20"(14), 24"(9) Course Change
9:35 am	Exc/Mas Standard-Walk/Run 28 dogs: 4"(5), 8"(14), 12"(9)	9:55 am	Exc/Mas JWW - Walk/Run 44 dogs: 16"(24), 24"(20)
10:25 am	Exc/Mas Standard- Walk/Run 31 dogs: 20"	10:55 am	Exc/Mas JWW-Walk/Run 27 dogs: 4"(3), 8"(14), 12"(10)
11:20 am	Exc/Mas Standard- Walk/Run 45 dogs: 16"(24), 24"(21); Course Change	11:35 am	Exc/Mas JWW-Walk/Run 28 dogs: 20" Course Change
12:45 pm	Open Standard - Walk/Run 20 dogs: 8"(1), 12"(1), 16"(12), 20"(4), 24"(2) Course Change	12:35 pm	Novice JWW - Walk/Run 28 dogs: 8"(3), 12"(5), 16"(7), 20"(10), 24"(3) Course Change
1:50 pm	Novice Standard - Walk/Run 30 dogs: 4"(1), 8"(3), 12"(6), 16"(6), 20"(11), 24"(3)	1:30 pm	Open JWW – Walk/Run 27 dogs: 4"(1), 8"(2), 12"(2), 16"(12), 20"(7), 24"(3)

PLEASE NOTE NOVICE JWW RUNS BEFORE OPEN JWW ON SUNDAY ONLY TO HELP AVOID CONFLICTS

A LUNCH BREAK CAN BE TAKEN AT JUDGES' DISCRETION; WALK THRUS CAN BE SPLIT AT JUDGE'S DISCRETION

GO TO WWW.NTXAGILITY.COM FOR COMPLETE RESULTS AFTER THE TRIAL

THANK YOU!!

SPECIAL PRIZES FOR SCHIPPERKES ONLY (SUNDAY TRIAL ONLY):

Agility Trophies Donated By The Following Generous Supporters Of SCA

High in Trial Agility (Regular)	Mary Anne Herwig & Tom Sitter & Oliver
High in Trial Agility (Preferred)	Lezlie Hall
Agility Masters classes	Marion Johnson 'Catcher, Bella & Bones'
Agility Excellent classes	Jack & Pat O'Connor given in loving memory of Hope Johnson
Agility Open classes	Kathy Swan 'Olympic Crest'
Agility Novice classes	Kathy Swan 'Olympic Crest'
Agility Masters Pref classes	Marion Johnson 'Catcher, Bella & Bones'
Agility Excellent Pref classes	Carol Rehtmeyer
Agility Open Pref classes	Rose Ellen Stone
Agility Novice Pref classes	Carol Rehtmeyer
Masters JWW Agility	Carol Rehtmeyer
Excellent JWW Agility	Carol Rehtmeyer
Open JWW Agility	Deb Bruner
Novice JWW Agility	Mary Snowsnoski in loving memory of Darby, beloved companion, 2006-2016

Motel/RV Park Information

NOTE: The club cannot guarantee that the hotels/motels listed below accept dogs. Please check regarding rates and dog acceptance policy when making reservations.

Please inform management of your dogs when you book reservations and when you register. Motel dog regulations and fees may change without notice. The club cannot be responsible for any changes.



MCKINNEY:

La Quinta Inn & Suites McKinney
6501 Henneman Way
McKinney, TX 75070
972-908-2370

Days Inn of McKinney
2104 N. Central Expressway (Exit 41)
McKinney, TX 75070
972.548.8888

Quality Inn
1300 N. Central Expressway
McKinney, TX 75069
972.547.9471
\$25 per day deposit

Motel 6 of McKinney
2125 White Ave. (NB Exit 40B; SB Exit 41)
McKinney, TX 75070
972.542.8600

PLANO:

LaQuinta Inn of Plano
1820 N. Central Expressway (Exit 29)
Plano, TX 75074
972.423.1300

Holiday Inn of Plano
700 Central Parkway East (Exit 29)
Plano, TX 75074
972.398.9918

Motel 6 of Plano
2550 N. Central Expressway (Exit 29)
Plano, TX 75074
972.578.1626

Best Western Park Suites of Plano
640 Park Blvd. East (Exit 29)
Plano, TX 75074
972.578.2243



RV SITES

MYERS PARK

Myers Park allows overnight parking for motor homes and/or travel trailers. Electric is available in the back parking lot. Hookups are not available if you choose to set up in the front parking lot. \$15/night (more for electric in the back)– Call **972-548-4792** to make arrangements. The main gate will not be locked at night. **If you park in the front parking lot, you may NOT park in front of The Landing (small building to the north of the show barn). You must park in front of the Show Barn or the Stall Barn only.** Please pay Myers Park personnel at the show site. The event committee cannot accept payment.

MELISSA

Lighthouse RV Resort
1020 N. US 75 (NB Exit 45; SB Exit 44)
Melissa, TX 75454
972.838.4600

PRINCETON

Hidden Acres RV Park
10364 CR 740 West
Princeton, TX 75407
972.736.1264; Call for directions