



DALLAS AGILITY WORKING GROUP

AKC AGILITY TRIAL JUDGING PROGRAM

Friday – Sunday, March 11, 12, 13, 2022

EVENT NUMBERS 2022526905, 2022526906, 2022526907

MYERS PARK & EVENT CENTER, 7117 County Road 166, McKinney, TX 75071

To Be Held Indoors on Packed Dirt (Non-Climate-Controlled Facility)

EVENT COMMITTEE EMERGENCY CONTACT LORY TANNAHILL, CHAIRPERSON – 214-477-6013



Measuring

All agility dogs are required to have an Official Jump Height Card and must be able to present it if asked.

Don't forget to bring your height card in case someone asks for it.

Our Judge Abbie Hanson is a Volunteer Measuring Official (VMO). ALL dogs (regardless of height) without a valid Jump Height Card or Yellow "Temporary Measurement" Form (for dogs under 2 years old) must be measured before their first run of the weekend. **Forms will be available at the check-in table. Please fill out a form before requesting to be measured.** Ms. Hanson will measure dogs in between classes throughout the day. **It is the exhibitor's responsibility to have their dog measured prior to running.**

Check-In

ARMBANDS NOT REQUIRED

Chapter 1, Section 19 of the Regulations for Agility Trials has been amended to eliminate the mandatory use of identifying stickers/armbands worn by agility exhibitors. The Club is not requiring armband stickers.

Traditional check-in is not necessary. Please check in on Agility Gate prior to your class.

Veterinarians (On Call)



McKinney Animal Hospital

4630 W Eldorado Pkwy
McKinney, TX
972.548.0749
M-F 7AM-6PM
Sat 8 AM-12PM

Emergency Animal Hospital of Collin County

10225 Custer Rd, Plano, TX
214.547.9900
M-Th 6PM-6AM
Fri. 6 PM-12 AM
Sat-Sun 12AM-12 AM (24 hr.)

Want to Help?

Agility trials run smoothly and efficiently with help from the exhibitors. Agility trials cannot exist without help from the exhibitors.



Please volunteer!

Volunteering will not conflict with your runs!

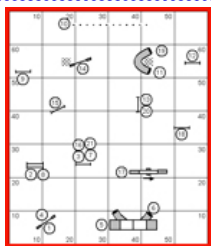
Volunteers get a \$2 voucher for every 10 dogs in the class they work good toward a future DAWG event.

If you have questions about volunteering, please contact: Chris Swain at chris56m@aol.com

GO HERE TO FILL YOUR NAME IN SLOTS TO VOLUNTEER:

<http://tinyurl.com/DAWGWorkerScheduleAKC>

There's a tab at the bottom for each day.



RUNNING ORDERS AND COURSE MAPS

Course maps will be posted on the Agility Gate app each morning of the trial. Printed course maps will NOT be available. You may also take a picture of the posted maps, should you so choose.

A preliminary running order will be posted on the www.nrxagility.com website on or before Wednesday prior to the first day of the trial. Please use the Agility Gate App for check-in on your phone.... **See Page 2 for more information.**

Arrival/Setup



There will be no early exhibitor setup on Thursday, March 10 except for volunteers helping to **unload the trailer at 1:00 pm.** You may set up on

Thursday IF you help unload the trailer. We can always use help! Thank you!

The building opens at 7:30 a.m. on Friday at 6:30 am Saturday and Sunday.

Yes, it's that time again. We lose an hour on Saturday night.



Set your clocks one hour ahead on Saturday Night!

Don't be late on Sunday!

Move-Ups:

The pretrial move-up deadline is **NEXT Monday, March 7 at 6:00 pm.** Please email the trial secretary on or before that date/time for a move up for the trial.

ntxagility@verizon.net

Day-to-day move-ups are permitted at the trials. You must fill out a move-up form (available at the check-in table) at any time, but no later than 20 minutes after the last dog crosses the finish line on Friday (for a Saturday move-up) or Saturday (for a Sunday move-up). Please give all move-up forms to the trial secretary.



New Title Bars.... Instead of a New Title Rosette, you can choose a mini-bar for a new title. For a \$5 donation to the 2022 DAWG charity-of-the-year, you can upgrade your bar and personalize it with the title and your dog's name.

CONCESSIONS

There will NOT be any concessions at this trial. Please feel free to bring your own snacks, drinks and lunch.

We will be utilizing the **AGILITY GATE APP** for the exhibitors' convenience.

Agility Gate is a free-to-download app that allows competitors to check-in their dogs via their mobile phone or tablet at an agility show and keep track of the current state of the run orders. It helps prevent crowding around the gate and allows competitors to keep tabs on things while crating away from the ring.

The access code is 1010

Course maps will be posted on the Agility Gate App each morning of the trial.

In the meantime, go here...

http://dogagility.info/agility_gate/

to read all about it, what it does, how to download it to your phone or tablet and how to use it.

REMEMBER - IF YOU'RE GOING TO BE ABSENT, YOU CAN LOG INTO AGILITY GATE FROM HOME AND MARK YOUR DOG AS A SCRATCH! PLEASE TRY TO REMEMBER TO DO THAT! RUNNING ORDERS WILL BE POSTED EACH MORNING OF THE TRIAL.

Mark Fletcher will be there on Saturday for formal portraits and ring-side action shots.

Photos can be viewed and purchased here -
<https://www.markfletcherphoto.com/> midweek after the trial.



Julianne Booth, Canine Care of North Texas

Will be at the trial for the care of your dog!

Certified Canine Therapeutic Massage Therapist, CTMT
Certified Canine Trigger Point Massage Therapist, CTrPMT

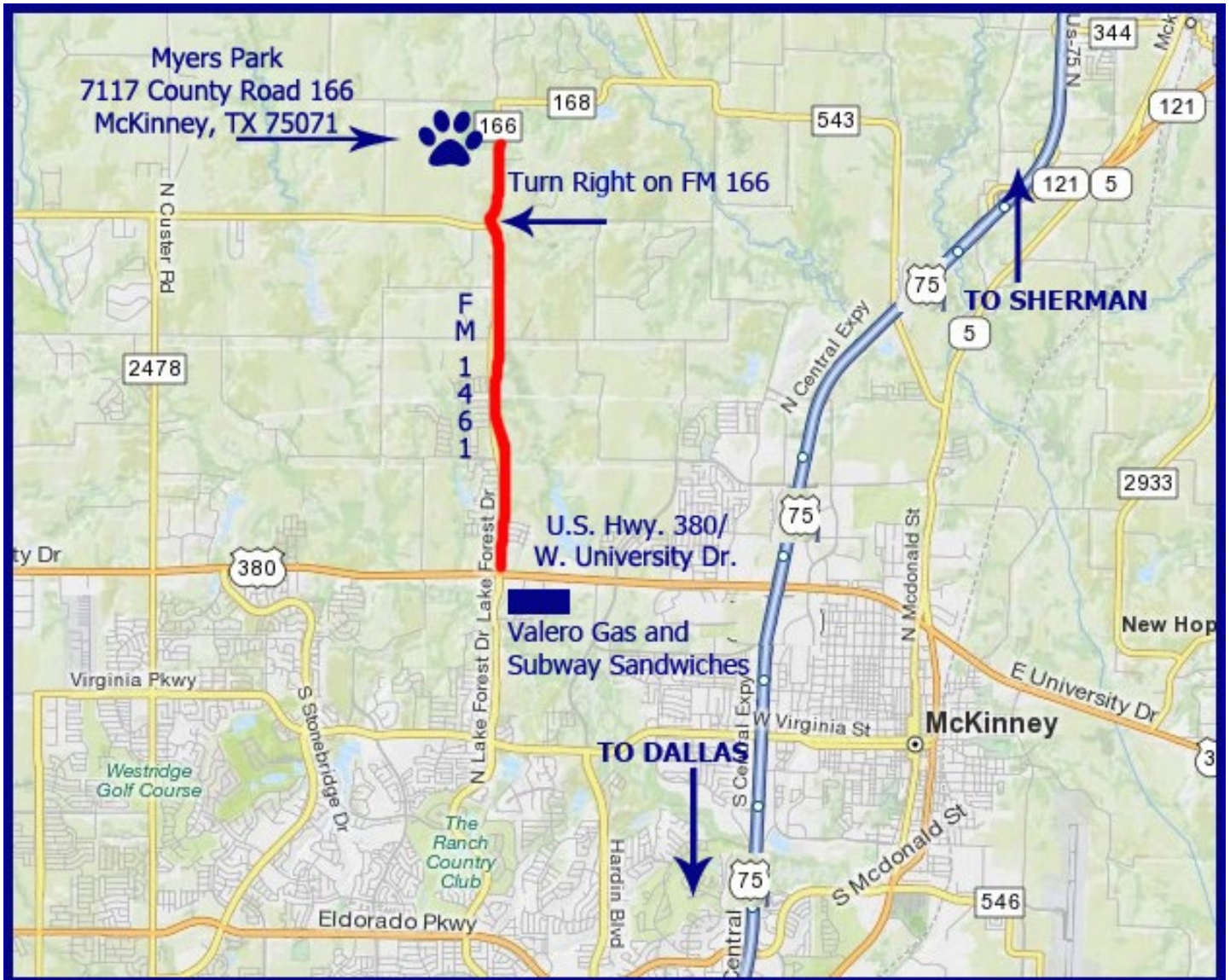
Link to scheduler: <https://caninecareofnorthtexas.fullslate.com> if you'd like to pre-register for an appointment.

By Texas law, you must have a supervision form from your veterinarian. Get one here...

[VET SUPERVISION FORM](#)

The Trial Site

The town of McKinney is about 33 miles northeast of downtown Dallas on U.S. 75/North Central Expressway. From the north or south: On U.S. 75, take the U.S. 380 exit and go west about 2.5 miles to FM 1461. Turn right (north) on FM 1461 and travel approximately 2.8 miles to County Road 166. Turn right (north) on County Road 166 and go about 0.8 miles (8/10 of a mile) to the site which is on the left.





DALLAS AGILITY WORKING GROUP

TIMES/RUNNING ORDER: Please mark conflicts on Agility Gate and notify the Gate Stewards of any running conflicts. Conflicts will be handled on a case-by-case basis.

Class Counts Are Contingent On Move-Up Changes Not Yet Received

Rings will run concurrently.

PLEASE CHECK THE CLASS ORDER AND YOUR RUNNING ORDER CAREFULLY

ALL TIMES (except for the starting times each day) ARE ESTIMATES.

TIMES ARE LISTED AS A COURTESY ONLY TO GIVE COMPETITORS AN IDEA OF WHEN THE CLASS WALK-THRU COULD BEGIN.

Neither the Club nor the Judges will be responsible for the start times. Please plan your arrival accordingly.

Running Order, Friday, March 11, 2022 (392 Total Runs)

RING 1 - Judge: Dawn M Glaser-Falk		RING 2 - Judge: Abbie Hanson	
APPROX. TIME-WALK	Briefing and Walk-Thru at 8:40 a.m.; Judging starts at 9:00 a.m.	APPROX. TIME-WALK	Briefing and Walk-Thru at 8:40 a.m.; Judging starts at 9:00 a.m.
9:00 AM (Run Time)	T2B –Run 19 dogs: 16”(5), 12”(6), 8”(8)	9:00 AM (Run Time)	EXC/MAS/FAST Run 21 dogs: 24”(13), 20”(8)
9:20 AM	T2B –Walk/Run 30 dogs: 24C(1), 24”(12), 20”(17) COURSE CHANGE	9:20 AM	EXC/MAS/FAST Walk/Run 15 dogs: 16”(7), 12”(1), 8”(6), 4”(1)
10:20 AM	PREMIER STD Briefing/Walk/Run 23 dogs: 24C(1), 24”(6), 20”(5), 16”(4), 12”(2), 8”(3), 4”(2) COURSE CHANGE	9:50 AM	OPEN/NOVICE FAST – Briefing/Walk/Run 29 dogs: 24C(1), 24”(4), 20”(9), 16”(5), 12”(5), 8”(5) COURSE CHANGE
11:15 AM	STD EXC/MAS Briefing/Walk/Run 35 dogs: 24C(1), 24”(15), 20”(19)	10:55 AM	JWW NOVICE – Briefing/Walk/Run 21 dogs: 24C(1), 24”(4), 20”(6), 16”(4), 12”(3), 8”(3) COURSE CHANGE
12:20 AM	STD EXC/MAS Walk/Run 20 dogs: 16”	11:50 AM	JWW OPEN – Briefing/Walk/Run 16 dogs: 24”(1), 20”(3), 16”(3), 12”(4), 8”(5) COURSE CHANGE
1:00 PM	STD EXC/MAS Walk/Run 31 dogs: 12”(13), 8”(16), 4”(2) COURSE CHANGE	12:40 PM	JWW EXC/MAS – Briefing/Walk/Run 35 dogs: 24C(1), 24”(16), 20”(18)
2:10 PM	STD OPEN Briefing/Walk/Run 19 dogs: 24”(4), 20”(3), 16”(3), 12”(5), 8”(4) COURSE CHANGE	1:35 PM	JWW EXC/MAS – Walk/Run 19 dogs: 16”
3:10 PM	STD NOVICE: Briefing/Walk/Run 10 dogs: 24”(1), 20”(3), 16”(2), 12”(2), 8”(2)	2:10 PM	JWW EXC/MAS –Walk/Run 31 dogs: 12”(13), 8”(16), 4”(2) COURSE CHANGE
		3:10 PM	PREMIER JWW – Briefing/Walk/Run 18 dogs: 24C(1), 24”(5), 20”(4), 16”(3), 12”(1), 8”(2), 4”(12)

Running Order, Saturday, March 12, 2022 (522 Total Runs)

PLEASE NOTE CHANGE FROM FRIDAY IN JUMP HEIGHT ORDER FOR T2B AND FAST

RING 1 - Judge: Abbie Hanson		RING 2 - Judge: Dawn M Glaser-Falk	
APPROX. TIME-WALK	Briefing and Walk-Thru at 7:40 a.m.; Judging starts at 8:00 a.m.	APPROX. TIME-WALK	Briefing and Walk-Thru at 7:40 a.m.; Judging Starts at 8:20 a.m.
8:00 AM (Run Time)	T2B – Run 40 dogs: 24C(1), 24”(15), 20”(24)	8:20 AM (Run Time)	EXC/MAS/FAST Run 20 dogs: 16”(7), 12”(8), 8”(4), 4”(1)
8:40 AM	T2B –Walk/Run 22 dogs: 16”(5), 12”(10), 8”(6), 4”(1)	8:40 AM	EXC/MAS/FAST Walk/Run 26 dogs: 24”(12), 20”(14)
9:30 AM	PREMIER STD Briefing/Walk/Run 35 dogs: 24C(1), 24”(7), 20”(11), 16”(7), 12”(3), 8”(4), 4”(2) COURSE CHANGE	9:20 AM	OPEN/NOVICE FAST – Briefing/Walk/Run 36 dogs: 24C(1), 24”(7), 20”(14), 16”(3), 12”(6), 8”(5) COURSE CHANGE
10:40 AM	STD EXC/MAS Briefing/Walk/Run 48 dogs: 24C(1), 24”(17), 20”(30)	10:30 AM	JWW NOVICE – Briefing/Walk/Run 22 dogs: 24C(1), 24”(7), 20”(7), 16”(2), 12”(2), 8”(3) COURSE CHANGE
		11:30 AM	JWW OPEN – Briefing/Walk/Run 20 dogs: 24”(2), 20”(6), 16”(2), 12”(5), 8”(5) COURSE CHANGE
@ 12:10 PM	PARADE OF AGILITY VETERANS – RING 1 (Bring your Kleenex)		
12:40 PM	STD EXC/MAS Walk/Run 26 dogs: 16”	12:55 PM	JWW EXC/MAS – Briefing/Walk/Run 46 dogs: 24C(1), 24”(18), 20”(27)
1:30 PM	STD EXC/MAS Walk/Run 46 dogs: 12”(24), 8”(19), 4”(3) COURSE CHANGE	2:00 PM	JWW EXC/MAS – Walk/Run 26 dogs: 16”
2:55 PM	STD OPEN Briefing/Walk/Run 20 dogs: 24”(4), 20”(4), 16”(1), 12”(6), 8”(5) COURSE CHANGE	2:45 PM	JWW EXC/MAS –Walk/Run 45 dogs: 12”(23), 8”(19), 4”(3) COURSE CHANGE
4:00 PM	STD NOVICE: Briefing/Walk/Run 13 dogs: 24”(4), 20”(4), 16”(2), 12”(0), 8”(3)	4:00 PM	PREMIER JWW – Briefing/Walk/Run 31 dogs: 24C(1), 24”(6), 20”(8), 16”(8), 12”(3), 8”(3), 4”(2)

ALL RESULTS WILL BE POSTED EACH EVENING AT: WWW.NTXAGILITY.COM

ALL TIMES (except for the starting times each day) ARE ESTIMATES.

TIMES ARE LISTED AS A COURTESY ONLY TO GIVE COMPETITORS AN IDEA OF WHEN THE CLASS WALK-THRUS COULD BEGIN.

Neither the Club nor the Judges will be responsible for the start times. Please plan your arrival accordingly.

Running Order, Sunday, March 13, 2022 (497 Total Runs)
T2B AND FAST JUMP HEIGHT ORDER THE SAME AS SATURDAY

RING 1 - Judge: Dawn M Glaser-Falk		RING 2 - Judge: Abbie Hanson	
APPROX. TIME-WALK	Briefing and Walk-Thru at 7:40 a.m.; Judging starts at 8:00 a.m.	APPROX. TIME-WALK	Briefing and Walk-Thru at 7:40 a.m.; Judging Starts at 8:25 a.m.
8:00 AM (Run Time)	T2B – Run 44 dogs: 24C(1), 24”(12), 20”(31)	8:25 AM (Run Time)	EXC/MAS/FAST Run 20 dogs: 16”(6), 12”(6), 8”(6), 4”(2)
8:45 AM	T2B –Walk/Run 20 dogs: 16”(6), 12”(8), 8”(6)	8:45 AM	EXC/MAS/FAST Walk/Run 24 dogs: 24”(10), 20”(14)
9:35 AM	PREMIER STD Briefing/Walk/Run 36 dogs: 24C(1), 24”(6), 20”(14), 16”(9), 12”(2), 8”(2), 4”(2) COURSE CHANGE	9:25 AM	OPEN/NOVICE FAST – Briefing/Walk/Run 31 dogs: 24C(1), 24”(5), 20”(13), 16”(3), 12”(6), 8”(3) COURSE CHANGE
10:45 AM	STD EXC/MAS Briefing/Walk/Run 45 dogs: 24C(1), 24”(14), 20”(30)	10:30 AM	JWW NOVICE – Briefing/Walk/Run 19 dogs: 24C(1), 24”(5), 20”(7), 16”(1), 12”(2), 8”(3) COURSE CHANGE
12:00 PM	STD EXC/MAS Walk/Run 22 dogs: 16”	11:25 AM	JWW OPEN – Briefing/Walk/Run 19 dogs: 24”(2), 20”(6), 16”(1), 12”(5), 8”(5) COURSE CHANGE
12:40 PM	STD EXC/MAS Walk/Run 44 dogs: 12”(19), 8”(21), 4”(4) COURSE CHANGE	12:20 PM	JWW EXC/MAS – Briefing/Walk/Run 43 dogs: 24C(1), 24”(15), 20”(27)
2:00 PM	STD OPEN Briefing/Walk/Run 21 dogs: 24”(5), 20”(5), 16”(1), 12”(6), 8”(4) COURSE CHANGE	1:25 PM	JWW EXC/MAS – Walk/Run 22 dogs: 16”
3:05 PM	STD NOVICE: Briefing/Walk/Run 13 dogs: 24”(3), 20”(4), 16”(2), 12”(1), 8”(3)	2:00 PM	JWW EXC/MAS –Walk/Run 43 dogs: 12”(19), 8”(20), 4”(4) COURSE CHANGE
		3:10 PM	PREMIER JWW – Briefing/Walk/Run 31 dogs: 24C(1), 24”(4), 20”(9), 16”(8), 12”(2), 8”(5), 4”(2)

WALK-THRUS CAN BE SPLIT FURTHER AT JUDGES' DISCRETION.

LUNCH BREAK MAY BE TAKEN AT JUDGES' DISCRETION.

ALL RESULTS WILL BE POSTED EACH EVENING AT: WWW.NTXAGILITY.COM



A COUPLE OF IMPORTANT NOTES....

PLEASE DO NOT LET YOUR DOGS POTTY INSIDE THE BUILDING.

IF AN ACCIDENT HAPPENS, IT IS YOUR RESPONSIBILITY

TO CLEAN IT UP – EVEN ON THE DIRT.

Exhibitors are responsible for cleaning up after their dogs immediately on hotel/motel and show grounds. Motels/hotels require that dogs be crated when unattended; no bathing or grooming of dogs in guest rooms. Exhibitors/handlers are responsible for any damages to motels/hotels or the event site and may result in disciplinary action by the Event Committee. Entries may be refused in the future for previous misuse of the motel facilities. This is an AKC-supported measure.

PLEASE REMEMBER: Hotels do not have to allow us to keep our dogs in the rooms. We are all responsible for insuring future pet acceptance at our favorite hotels. Please clean up after your dogs (inside and outside), keep them quiet so as not to disturb other guests, and generally be considerate of others. We all want to continue to have nice places to stay when we travel with our dogs.

Motel/RV Park Information

NOTE: The club cannot guarantee that the hotels/motels listed below accept dogs. Please check regarding rates and dog acceptance policy when making reservations.

Please inform management of your dogs when you book reservations and when you register. Motel dog regulations and fees may change without notice. The club cannot be responsible for any changes.



MCKINNEY:

La Quinta Inn & Suites McKinney
6501 Henneman Way
McKinney, TX 75070
972-908-2370

Days Inn of McKinney
2104 N. Central Expressway (Exit 41)
McKinney, TX 75070
972.548.8888

Quality Inn
1300 N. Central Expressway
McKinney, TX 75069
972.547.9471
\$25 per day deposit

Motel 6 of McKinney
2125 White Ave. (NB Exit 40B; SB Exit 41)
McKinney, TX 75070
972.542.8600

PLANO:

LaQuinta Inn of Plano
1820 N. Central Expressway (Exit 29)
Plano, TX 75074
972.423.1300

Holiday Inn of Plano
700 Central Parkway East (Exit 29)
Plano, TX 75074
972.398.9918

Motel 6 of Plano
2550 N. Central Expressway (Exit 29)
Plano, TX 75074
972.578.1626

Best Western Park Suites of Plano
640 Park Blvd. East (Exit 29)
Plano, TX 75074
972.578.2243



RV INFO

MYERS PARK

Myers Park allows overnight parking for motor homes and/or travel trailers. Electric is available in the back parking lot. Hookups are not available if you choose to set up in the front parking lot. \$15/night (more for electric in the back)– Call **972-548-4792** to make arrangements. The main gate will not be locked at night. **If you park in the front parking lot, you may NOT park in front of The Landing (small building to the north of the show barn). You must park in front of the Show Barn or the Stall Barn only.** Please pay Myers Park personnel at the show site. The event committee cannot accept payment.