



DALLAS AGILITY WORKING GROUP

AKC AGILITY TRIAL JUDGING PROGRAM

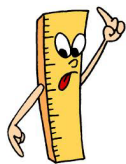
Friday – Sunday, March 8, 9, 10, 2024

Event Numbers 2024526905, 2024526906, 2024526907

MYERS PARK & EVENT CENTER, 7117 County Road 166, McKinney, TX 75071

To Be Held Indoors on Packed Dirt (Non-Climate-Controlled Facility)

EVENT COMMITTEE EMERGENCY CONTACT CHRIS SWAIN, CHAIRPERSON – 972-965-5851



MEASURING

All agility dogs are required to have an Official Jump Height Card and must be able to present it if asked. Don't forget to bring your height All agility dogs are required to have an Official Jump Height Card and must be able to present it if asked. Don't forget to bring your height card in case someone asks for it.

BOTH OF OUR JUDGES ARE VMOs (MEASURING OFFICIALS.) ALL dogs (regardless of height) without a valid Jump Height Card or Yellow "Temporary Measurement" Form (for dogs under 2 years old) must be measured before their first run of the weekend. Forms will be available at the ribbon-label table. Please fill out a form before requesting to be measured. If you already have a permanent height card, be sure to have it with you at the trial in case you are asked for it. If your dog needs to be measured, it is your responsibility to have it done before you run. **Failure to do so will result in removal of any qualifying runs you receive.**

CHECK IN

ARMBANDS NOT REQUIRED

Chapter 1, Section 19 of the Regulations for Agility Trials has been amended to eliminate the mandatory use of identifying stickers/armbands worn by agility exhibitors. The Club is not requiring armband stickers.

Traditional check-in is not necessary. Please check in on Agility Gate prior to your class.

VETERINARIANS



McKinney Animal Hospital
4630 W Eldorado
Pkwy McKinney, TX
972.548.0749
M-F 7AM-6PM
Sat 8 AM-12PM

Emergency Animal Hospital of Collin County
10225 Custer Rd, Plano, TX
214.547.9900
M-Th 6PM-6AM • Fri. 6 PM-12 AM
Sat-Sun 12AM-12 AM (24 hr.)

WANT TO HELP?

Agility trials run smoothly and efficiently with help from the exhibitors. Agility trials cannot exist without help from the exhibitors.



Volunteers get a voucher valued at \$1 for every 10 dogs in the class they work.

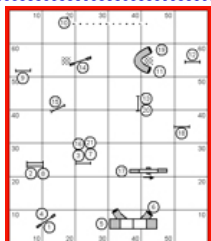
Good toward a future DAWG event, training, merchandise, or at the concession stands.

If you have questions about volunteering, please contact Trial Chair, Chris Swain at chris56m@aol.com before the event, or one of our Chief Ring Stewards during the event.

FILL YOUR NAME IN HERE TO VOLUNTEER:

<http://tinyurl.com/DAWGWorkerScheduleAKC>

There's a tab at the bottom for each day.



RUNNING ORDERS AND COURSE MAPS

Course maps will be posted on the Agility Gate app each morning of the trial. Printed course maps will NOT be available. You may also take a picture of the posted maps, should you so choose.

A preliminary running order will be posted on the www.ntxagility.com website on or before Wednesday prior to the first day of the trial. Please use the Agility Gate App for check-in on your phone... **See Page 2 for more information.**

SPECIAL PRIZE FOR NOVICE A COMPETITORS!

DAWG is offering a special **NOVICE A TITLE RIBBON** and **GIFT CERTIFICATE** to all Novice A handlers earning their first agility title at this event. See Trial Chair Chris Swain to claim your prize.

Move-Ups:

The pretrial move-up deadline is **NEXT Monday, March 4 at 6:00 pm.** Please email the trial secretary on or before that date/time for a move up for the trial.

tralsecretary@ntxagility.com

Day-to-day move-ups are permitted at the trials. You must fill out a move-up form (available at the check-in table) at any time, but no later than 20 minutes after the last dog crosses the finish line on Friday (for a Saturday move-up) or Saturday (for a Sunday move-up). Please give all move-up forms to the trial secretary.



CONCESSIONS ...



We have Java Journey who have fabulous coffees and breakfast

pastries- all three days!!!!
Feel free to bring lunch and snacks, plus there are fast food places nearby.

ARRIVAL & SETUP



There will be no early exhibitor setup on Thursday, March 7 except for volunteers helping to **unload the trailer at 1:00 pm.** You may set up on Thursday IF you help unload the trailer. We can always use help! Thank you!

The building opens at 6:30 a.m. all 3 days.

We will be utilizing the **AGILITY GATE APP** for the exhibitors' convenience.

Agility Gate is a free-to-download app that allows competitors to check-in their dogs via their mobile phone or tablet at an agility show and keep track of the current state of the run orders. It helps prevent crowding around the gate and allows competitors to keep tabs on things while crating away from the ring.

The access code is 1010

Course maps will be posted on the Agility Gate App each morning of the trial.

In the meantime, go here...

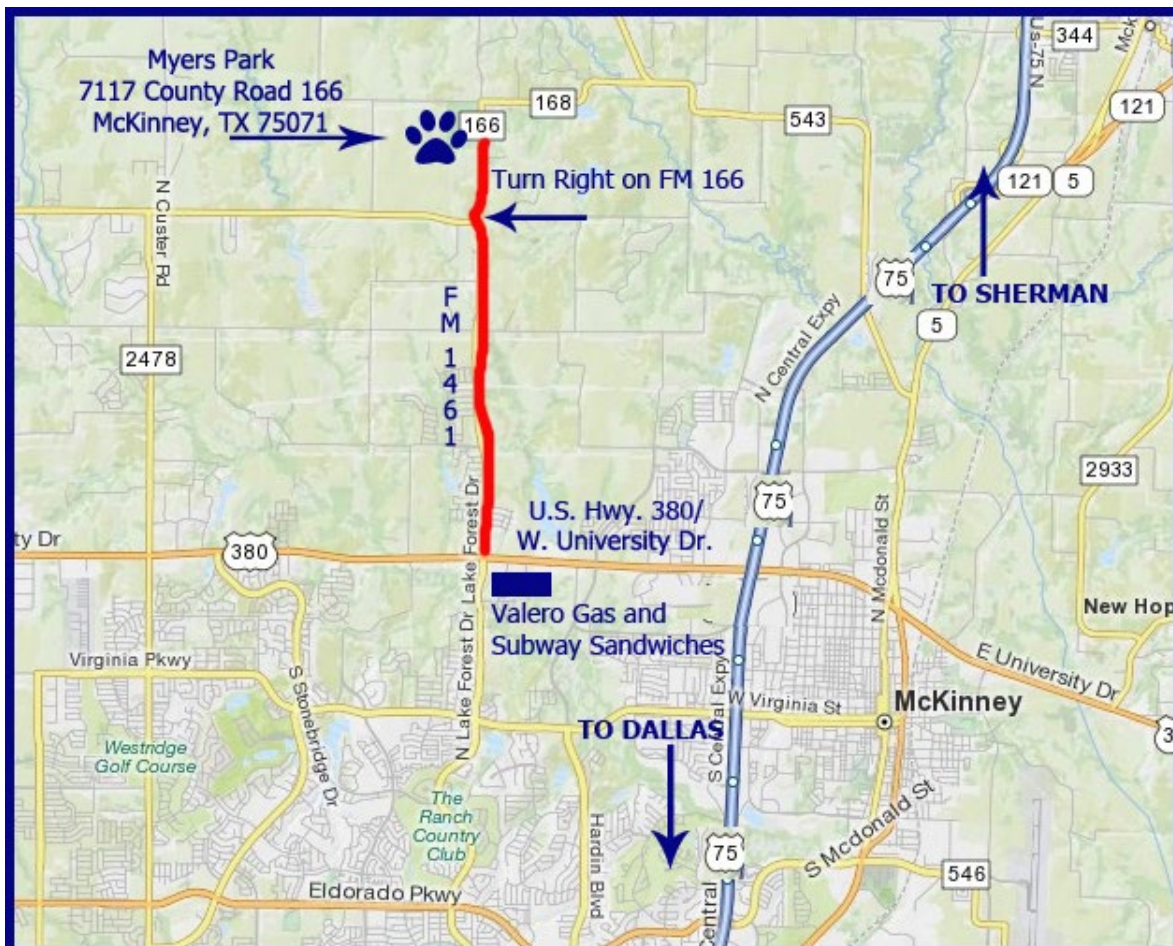
http://dogagility.info/agility_gate/

to read all about it, what it does, how to download it to your phone or tablet and how to use it.

REMEMBER - IF YOU'RE GOING TO BE ABSENT, YOU CAN LOG INTO AGILITY GATE FROM HOME AND MARK YOUR DOG AS A SCRATCH! PLEASE TRY TO REMEMBER TO DO THAT! RUNNING ORDERS WILL BE POSTED EACH MORNING OF THE TRIAL.

The Trial Site

The town of McKinney is about 33 miles northeast of downtown Dallas on U.S. 75/North Central Expressway. From the north or south: On U.S. 75, take the U.S. 380 exit and go west about 2.5 miles to FM 1461. Turn right (north) on FM 1461 and travel approximately 2.8 miles to County Road 166. Turn right (north) on County Road 166 and go about 0.8 miles (8/10 of a mile) to the site which is on the left.





DALLAS AGILITY WORKING GROUP

TIMES/RUNNING ORDER: Please mark conflicts on Agility Gate and notify the Gate Stewards of any running conflicts. Conflicts will be handled on a case-by-case basis.
Class Counts Are Contingent On Move-Up Changes Not Yet Received
Rings Alternate on Friday. Rings will run concurrently on Sat & Sun.
PLEASE CHECK THE CLASS ORDER AND YOUR RUNNING ORDER CAREFULLY

ALL TIMES (except for the starting times each day) ARE ESTIMATES.

TIMES ARE LISTED AS A COURTESY ONLY TO GIVE COMPETITORS AN APPROXIMATION OF WHEN THE CLASS WALK-THRU COULD BEGIN.
 Neither the Club nor the Judges will be responsible for the start times. Please plan your arrival accordingly.

Running Order, Friday, March 8, 2024 (311 Total Runs)

RING 1 - Judge: Karen Wlodarski		RING 2 - Judge: Greg Fontaine	
APPROX. TIME-WALK	Briefing and Walk-Thru at 8:40 a.m.; Judging starts at 9:00 a.m.	APPROX. TIME-WALK	Briefing and Walk-Thru at 8:40 a.m. Judging starts at 9:00 a.m.
9:00 AM (Run Time)	T2B –Run 19 dogs: 16”(7), 12”(4), 8”(7), 4”(1)	9:00 AM (Run Time)	ALL FAST Run 23 dogs: 24”(10), 20”(13)
9:25 AM	T2B –Walk/Run 19 dogs: 24”(7), 20”(12) COURSE CHANGE	9:25 AM	ALL FAST Walk/Run 34 dogs: 16”(9), 12”(11), 8”(12), 4”(2) COURSE CHANGE
10:15 AM	PREMIER STD Briefing/Walk/Run 14 dogs: 24”(1), 20”(6), 16”(3), 12”(2), 8”(2) COURSE CHANGE	10:30 AM	JWW NOVICE – Briefing/Walk/Run 14 dogs: 24”(2), 20”(3), 16”(2), 12”(5), 8”(1), 4”(1) COURSE CHANGE
11:05 AM	STD EXC/MAS Briefing/Walk/Run 24 dogs: 24”(9), 20”(15)	11:25 AM	JWW OPEN – Briefing/Walk/Run 19 dogs: 24”(2), 20”(3), 16”(1), 12”(4), 8”(9) COURSE CHANGE
12:00 PM	STD EXC/MAS Walk/Run 17 dogs: 16”	12:25 PM	JWW EXC/MAS – Briefing/Walk/Run 23 dogs: 24”(9), 20”(14)
12:40 PM	STD EXC/MAS Walk/Run 26 dogs: 12”(9), 8”(13), 4”(4) COURSE CHANGE	1:15 PM	JWW EXC/MAS – Walk/Run 17 dogs: 16”
1:45 PM	STD OPEN Briefing/Walk/Run 15 dogs: 24”(1), 20”(3), 16”(1), 12”(3), 8”(7) COURSE CHANGE	1:50 PM	JWW EXC/MAS –Walk/Run 26 dogs: 12”(10), 8”(12), 4”(4) COURSE CHANGE
2:50 PM	STD NOVICE: Briefing/Walk/Run 13 dogs: 24”(2), 20”(2), 16”(2), 12”(5), 8”(2)	2:45 PM	PREMIER JWW – Briefing/Walk/Run 8 dogs: 20”(5), 16”(2), 12”(1)

Running Order, Saturday, March 9, 2024 (434 Total Runs)

RING 1 - Judge: Greg Fontaine		RING 2 – Judge: Karen Wlodarski	
APPROX. TIME-WALK	Briefing and Walk-Thru at 7:40 a.m.; Judging starts at 8:00 a.m.	APPROX. TIME-WALK	Briefing and Walk-Thru at 7:40 a.m.; (Ring 2 will be open for walking during 16”-4” T2B) Judging Starts at 8:30 a.m.
8:00 AM (Run Time)	T2B –Run 16 dogs: 16”(7), 12”(3), 8”(5), (1)	8:30 AM (Run Time)	ALL FAST Run 32 dogs: 16”(14), 12”(8), 8”(9), 4”(1)
8:15 AM	T2B –Walk/Run 29 dogs: 24”(6), 20”(23) COURSE CHANGE	9:05 AM	ALL FAST Walk/Run 37 dogs: 24”(13), 20”(24) COURSE CHANGE
9:15 AM	PREMIER STD Briefing/Walk/Run 26 dogs: 24”(1), 20”(11), 16”(6), 12”(6), 8”(2) COURSE CHANGE	10:15 AM	JWW NOVICE – Briefing/Walk/Run 19 dogs: 24”(2), 20”(6), 16”(2), 12”(7), 8”(2) COURSE CHANGE
10:20 AM	STD EXC/MAS Briefing/Walk/Run 36 dogs: 24”(13), 20”(23)		
@ 11:30 PM	PARADE OF AGILITY VETERANS – RING 1 (Bring your Kleenex)		
12:15 PM (Approx. Walk)	STD EXC/MAS Walk/Run 28 dogs: 16”	12:15 PM (Approx. Walk)	JWW OPEN – Briefing/Walk/Run 22 dogs: 24”(3), 20”(9), 16”(1), 12”(3), 8”(6) COURSE CHANGE
1:05 PM	STD EXC/MAS Walk/Run 32 dogs: 12”(15), 8”(13), 4”(4) COURSE CHANGE	12:55 PM	JWW EXC/MAS – Briefing/Walk/Run 36 dogs: 24”(12), 20”(24)
2:15 PM	STD OPEN Briefing/Walk/Run 19 dogs: 24”(1), 20”(9), 16”(1), 12”(2), 8”(6) COURSE CHANGE	1:50 PM	JWW EXC/MAS – Walk/Run 30 dogs: 16”
3:20 PM	STD NOVICE: Briefing/Walk/Run 23 dogs: 24”(3), 20”(6), 16”(2), 12”(9), 8”(3)	2:35 PM	JWW EXC/MAS –Walk/Run 33 dogs: 12”(15), 8”(14), 4”(4) COURSE CHANGE
		3:40 PM	PREMIER JWW – Briefing/Walk/Run 16 dogs: 20”(6), 16”(6), 12”(2), 8”(2)

ALL RESULTS WILL BE POSTED EACH EVENING AT: WWW.NTXAGILITY.COM

ALL TIMES (except for the starting times each day) ARE ESTIMATES.

TIMES ARE LISTED AS A COURTESY ONLY TO GIVE COMPETITORS AN APPROXIMATION OF WHEN THE CLASS WALK-THRUS COULD BEGIN. Neither the Club nor the Judges will be responsible for the start times. Please plan your arrival accordingly.

Running Order, Sunday, March 10, 2024 (391 Total Runs)

RING 1 - Judge: Karen Wlodarski		RING 2 - Judge: Greg Fontaine	
APPROX. TIME-WALK	Briefing and Walk-Thru at 7:40 a.m.; Judging starts at 8:00 a.m.	APPROX. TIME-WALK	Briefing and Walk-Thru at 7:40 a.m.; (Ring 2 will be open for walking during 16"-4" T2B) Judging Starts at 8:30 a.m.
8:00 AM (Run Time)	T2B –Run 17 dogs: 16"(8), 12"(3), 8"(5), 4"(1)	8:30 AM (Run Time)	ALL FAST Run 30 dogs: 16"(10), 12"(6), 8"(13), 4"(1)
8:15 AM	T2B –Walk/Run 26 dogs: 24"(9), 20"(17) COURSE CHANGE	9:00 AM	ALL FAST Walk/Run 32 dogs: 24"(9), 20"(23) COURSE CHANGE
9:10 AM	PREMIER STD Briefing/Walk/Run 26 dogs: 24"(1), 20"(10), 16"(7), 12"(5), 8"(3) COURSE CHANGE	10:05 AM	JWW NOVICE – Briefing/Walk/Run 22 dogs: 24"(3), 20"(7), 16"(3), 12"(5), 8"(4) COURSE CHANGE
10:10 AM	STD EXC/MAS Briefing/Walk/Run 31 dogs: 24"(11), 20"(20)	11:05 AM	JWW OPEN – Briefing/Walk/Run 20 dogs: 24"(1), 20"(8), 16"(1), 12"(4), 8"(6) COURSE CHANGE
11:15 AM	STD EXC/MAS Walk/Run 23 dogs: 16"	12:05 PM	JWW EXC/MAS – Briefing/Walk/Run 31 dogs: 24"(11), 20"(20)
12:00 PM	STD EXC/MAS Walk/Run 27 dogs: 12"(12), 8"(11), 4"(4) COURSE CHANGE	12:55 PM	JWW EXC/MAS – Walk/Run 26 dogs: 16"
1:05 PM	STD OPEN Briefing/Walk/Run 19 dogs: 24"(2), 20"(7), 16"(2), 12"(2), 8"(6) COURSE CHANGE	1:35 PM	JWW EXC/MAS –Walk/Run 29 dogs: 12"(13), 8"(12), 4"(4) COURSE CHANGE
2:15 PM	STD NOVICE: Briefing/Walk/Run 18 dogs: 24"(1), 20"(6), 16"(2), 12"(4), 8"(5)	2:35 PM	PREMIER JWW – Briefing/Walk/Run 14 dogs: 20"(5), 16"(5), 12"(4)

WALK-THRUS CAN BE SPLIT FURTHER AT JUDGES' DISCRETION.

LUNCH BREAK MAY BE TAKEN AT JUDGES' DISCRETION.

ALL RESULTS WILL BE POSTED EACH EVENING AT: WWW.NTXAGILITY.COM

A COUPLE OF IMPORTANT NOTES....

PLEASE DO NOT LET YOUR DOGS POTTY INSIDE THE BUILDING.
IF AN ACCIDENT HAPPENS, IT IS YOUR RESPONSIBILITY
TO CLEAN IT UP – EVEN ON THE DIRT.

Exhibitors are responsible for cleaning up after their dogs immediately on hotel/motel and show grounds. Motels/hotels require that dogs be crated when unattended; no bathing or grooming of dogs in guest rooms. Exhibitors/handlers are responsible for any damages to motels/hotels or the event site and may result in disciplinary action by the Event Committee. Entries may be refused in the future for previous misuse of the motel facilities. This is an AKC-supported measure.

PLEASE REMEMBER: Hotels do not have to allow us to keep our dogs in the rooms. We are all responsible for insuring future pet acceptance at our favorite hotels. Please clean up after your dogs (inside and outside), keep them quiet so as not to disturb other guests, and generally be considerate of others. We all want to continue to have nice places to stay when we travel with our dogs.

Motel/RV Park Information

NOTE: The club cannot guarantee that the hotels/motels listed below accept dogs. Please check regarding rates and dog acceptance policy when making reservations.

Please inform management of your dogs when you book reservations and when you register. Motel dog regulations and fees may change without notice. The club cannot be responsible for any changes.



MCKINNEY:

La Quinta Inn & Suites McKinney
6501 Henneman Way
McKinney, TX 75070
972-908-2370

Days Inn of McKinney
2104 N. Central Expressway (Exit 41)
McKinney, TX 75070
972.548.8888

Quality Inn
1300 N. Central Expressway
McKinney, TX 75069
972.547.9471
\$25 per day deposit

Motel 6 of McKinney
2125 White Ave. (NB Exit 40B; SB Exit 41)
McKinney, TX 75070
972.542.8600

PLANO:

LaQuinta Inn of Plano
1820 N. Central Expressway (Exit 29)
Plano, TX 75074
972.423.1300

Holiday Inn of Plano
700 Central Parkway East (Exit 29)
Plano, TX 75074
972.398.9918

Motel 6 of Plano
2550 N. Central Expressway (Exit 29)
Plano, TX 75074
972.578.1626

Best Western Park Suites of Plano
640 Park Blvd. East (Exit 29)
Plano, TX 75074
972.578.2243



RV INFO

MYERS PARK

Myers Park allows overnight parking for motor homes and/or travel trailers. Electric is available in the back parking lot. Hookups are not available if you choose to set up in the front parking lot. \$15/night (more for electric in the back)– Call **972-548-4792** to make arrangements. The main gate will not be locked at night. **If you park in the front parking lot, you may NOT park in front of The Landing (small building to the north of the show barn). You must park in front of the Show Barn or the Stall Barn only.** Please pay Myers Park personnel at the show site. The event committee cannot accept payment.