



# DALLAS-FT WORTH METRO GOLDEN RETRIEVER CLUB AKC AGILITY TRIAL JUDGING PROGRAM November 27, 28, 29, 2020

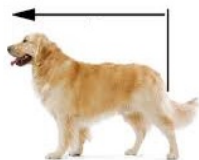
EVENT NUMBERS: 2020266713, 2020266714, 2020266715

Myers Park & Event Center  
7117 County Road 166  
McKinney, TX 75071

Indoor, Non-Climate Controlled Arena with Packed Dirt Surface

EMERGENCY CONTACTS - Shari Degan, Chairperson – 214-796-0988; Sherri Farmer, Trial Secretary – 972-841-4066

## CHECK-IN & MEASUREMENTS



During the COVID pandemic, AKC is not requiring dogs to be measured prior to running.

Our Judges are NOT measuring officials. However, if an AKC Rep is present (not expected), that person may choose to measure. If official measurements are being done, it is the exhibitor's responsibility to have their dog measured prior to running.

## Check-In

### ARMBANDS NOT REQUIRED

Chapter 1, Section 19 of the Regulations for Agility Trials has been amended to eliminate the mandatory use of identifying stickers/armbands worn by agility exhibitors. OTCWF is not requiring armband stickers.

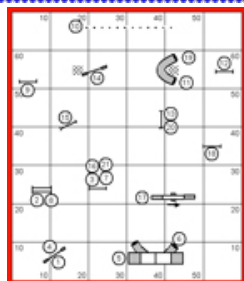
Traditional check-in is not necessary. Please check in on the gate sheet prior to your class. Bring your own pen – there won't be any community pens available.

## Veterinarians (On Call)

Emergency Animal Hospital of Collin County  
10225 Custer Road,  
Plano, TX 75025 - 214-547-9900  
(6pm-8am Mon-Thurs, and 6 pm Fri through 8 am Monday); and

McKinney Animal Hospital  
4630 W Eldorado Pkwy  
McKinney, TX - 972.548.0749  
M-F 7am-6pm; Sat 8 am-12pm

## RUNNING ORDERS AND COURSE MAPS



Course maps will be posted on our website [www.ntxagility.com](http://www.ntxagility.com) each evening of the trial for the following day. Printed course maps will NOT be available.

Course maps will also be posted in a prominent area so you can take a picture of them with your phone. Gate sheets will be mounted on poster board for check-in. **PLEASE BRING YOUR OWN PEN TO CHECK IN. NO COMMUNITY PENS WILL BE AVAILABLE.**



## Arrival/ Setup

The building should be open for set up at 6:30 a.m. all 3 days.

**WE COULD USE SOME HELP UNLOADING  
THE TRAILER ON WEDNESDAY NOV 25  
AT 12:00 NOON.**

You may NOT setup on Wednesday unless you are helping unload the trailer.

## CONCESSIONS

Concessions **WILL NOT** be available at the trial. Please feel free to bring your own food and drinks. There are fast food places nearby on Hwy 380.

## MOVE-UPS

The pretrial move-up deadline is Monday, November 23 at 6:00 pm. Please email the trial secretary on or before that date/time for a move up for the trial.

[ntxagility@verizon.net](mailto:ntxagility@verizon.net)

Day-to-day move-ups are permitted at the trials. You must fill out a move-up form (available at the check-in table) at any time, but no later than 20 minutes after the last dog crosses the finish line on Friday (for a Saturday move-up) or Saturday (for a Sunday move-up). Please give all move-up forms to the trial secretary.



**CALLING ALL EXHIBITORS...  
WE NEED YOU!**

Agility trials cannot exist without help from the exhibitors.

**Please volunteer!**

Experience is not necessary. If you are new to working, we will train you – the jobs are very easy! Pick your own schedule! Go to this Google Doc....

<http://tinyurl.com/GoldensWorkers>

And sign in where you would like to work. If you have questions, please contact: Shari Degan at [mohrgold4@reagan.com](mailto:mohrgold4@reagan.com)

Volunteers will receive a voucher for \$4 off a future DFWMGRC trial.

(Minimum volunteer time required to qualify for volunteer benefits is one full class.)

**THANK YOU!!**

**WE**  **VOLUNTEERS**

# Covid Guidelines

1. Practice social distancing consistent with CDC guidelines
2. Everyone must wear a mask except when running a dog
3. Disposable gloves will be available to course builders, ring crew, and any other workers
4. Hand sanitizer & disinfecting spray bottles will be available around the arena
5. No common writing instruments. Please bring your own pen.
6. No MACH/PACH cakes or community shared food items at this trial.
7. There will be no self-serve ribbons. Club volunteers will be putting the sticker on the ribbons for you.
8. Please maintain 6' from the gate steward.
9. Once the running order is placed at the gate, the gate steward is the only person to mark the board.
10. Leash runner will use a "grabber" to pick up the leashes.
11. Walk-thru groups will be reduced.
12. The timer/scribe table, and chairs will be wiped down with disinfectant after each class.
13. There will be no judges briefing for the Excellent/Master/Premier/T2B classes. There will be a judges' briefing for Novice, Open, and FAST classes.
14. Paper copy of maps will not be available. They will be posted at [www.ntxagility.com](http://www.ntxagility.com) each evening prior to the trial day. Maps will also be posted at the trial site for anyone who wishes to take pictures of them.
15. Results will be posted at the trial site on the day-of, and posted at [www.ntxagility.com](http://www.ntxagility.com) each evening of the trial.
16. Please do not crowd the results area.
17. Please wash and sanitize your hands.



**MARK FLETCHER** will be taking his wonderful pictures on Saturday. Photos can be viewed and purchased at <https://www.markfletcherphoto.com/>

## **DIRT!!**

For the comfort and well-being of all of our dogs (and people), the club has made arrangements to have the dirt worked each night of the trial. In order for this to be done, all equipment must be removed from both rings at the end of Friday and Saturday runs.



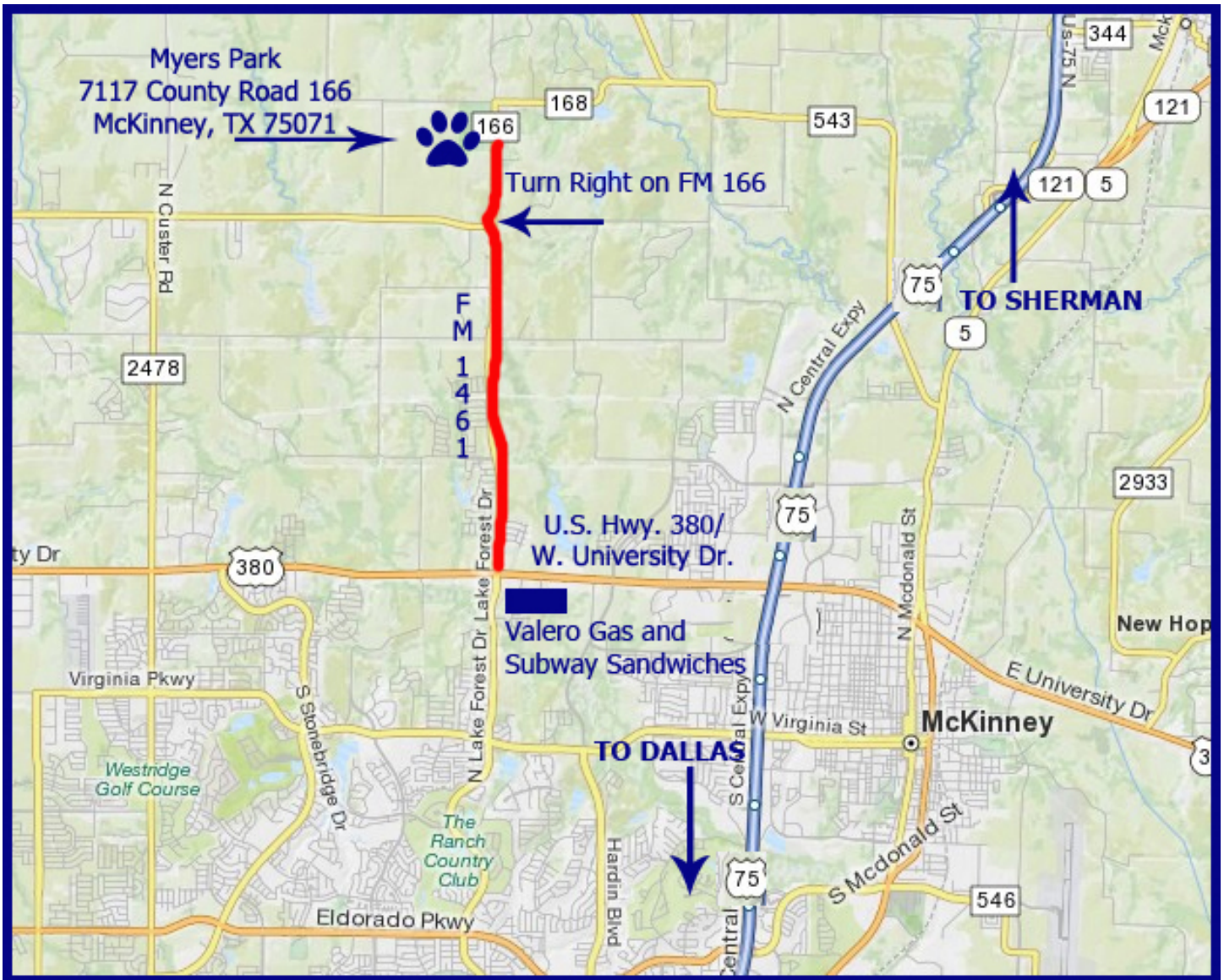
**It would be very helpful if as many people as possible can stay a few minutes Friday and Saturday afternoons and help us clear the rings. If enough people pitch in, it could take less than 15 minutes!**

Any and all assistance will be greatly appreciated.  
Your dog (and you!) will really appreciate having nice dirt to run on every day.

## **Thank You!!**

## THE TRIAL SITE

The town of McKinney is about 33 miles northeast of downtown Dallas on U.S. 75/North Central Expressway. From the north or south: On U.S. 75, take the U.S. 380 exit and go west about 2.5 miles to FM 1461. Turn right (north) on FM 1461 and travel approximately 2.8 miles to County Road 166. Turn right (north) on County Road 166 and go about 0.8 miles (8/10 of a mile) to the site which is on the left.



**GO TO [WWW.NTXAGILITY.COM](http://WWW.NTXAGILITY.COM) FOR COMPLETE RESULTS EACH EVENING AND AFTER THE TRIAL**



A LUNCH BREAK CAN BE TAKEN AT JUDGES' DISCRETION; WALK THRUS CAN BE SPLIT AT JUDGE'S DISCRETION

## DALLAS-FT. WORTH METRO GOLDEN RETRIEVER CLUB

TIMES/RUNNING ORDER: Please notify the Gate Stewards of any running conflicts.

**Class Counts Are Contingent On Move-Up Changes Not Yet Received.**  
Rings will run concurrently.

**PLEASE CHECK YOUR RUNNING ORDER AND JUMP HEIGHTS CAREFULLY**

**ALL TIMES (except for the starting times each day) ARE ESTIMATES.**

TIMES ARE LISTED AS A COURTESY ONLY TO GIVE COMPETITORS AN IDEA OF WHEN THE CLASS WALK-THRUS COULD BEGIN.

Neither the Club nor the Judges will be responsible for the start times. Please plan your arrival accordingly.

### Running Order, Friday, November 27, 2020 (509 Total Runs)

Ring 1 – Michael Teh		Ring 2 – Christie Bowers	
APPROX. WALK TIME	No Briefing For T2B. SPLIT (2 Groups) Walk Thru Begins at 7:40 am; Judging Starts at 8:00 am;	APPROX. WALK TIME	Briefing and SPLIT (2 Groups) Walk-Thru at 7:40 a.m.; Judging starts at 8:15 a.m.
8:00 am	*T2B – Run 40 dogs; 24(8); 20"(32)	8:15 am	Exc/Mas FAST – Run 30 dogs; 16"(15), 12"(6), 8"(7), 4"(2)
8:40 am	*T2B-Walk/Walk/Run 29 dogs: 16"(9); 12"(12); 8"(8) <b>Course Change</b>	8:45 am	Ex/Mas FAST – Walk/Run 28 dogs; 24C(1), 24"(7), 20"(20)
9:50 am	*Premier Std – Walk/Run 25 dogs; 24C(1), 24"(5), 20"(13), 16"(1), 12"(3), 8"(0); 4"(2) <b>Course Change</b>	9:30 am	OPEN & NOV FAST – Briefing/Walk/Walk/Run 32 dogs; 24"(6), 20"(11), 16"(5), 12"(8), 8"(2) <b>Course Change</b>
10:50 am	*Exc/Mas Std – Walk/Walk/Run 52 dogs; 24C(1), 24"(13), 20"(38)	10:45 am	Novice JWW – Briefing/Walk/Run 27 dogs; 24"(6), 20"(11), 16"(4), 12"(5), 8"(1) - <b>Course Change</b>
12:20 pm	*Exc/Mas Std – Walk/Run 23 dogs; 16"	11:50 am	Open JWW – Briefing/Walk/Run 24 dogs; 24"(1), 20"(6), 16"(8), 12"(3), 8"(5), 4"(1) <b>Course Change</b>
1:05 pm	*Exc/Mas Std – Walk/Walk/Run 30 dogs; 12"(16), 8"(12), 4"(2) <b>Course Change</b>	12:50 Pm	*Exc/Mas JWW – Walk/Walk/Run 50 dogs; 24C(1), 24"(13), 20"(36)
2:20 pm	Open Std – Briefing/Walk/Run 16 dogs; 24"(1), 20"(3), 16"(4), 12"(4), 8"(4) - <b>Course Change</b>	2:05 pm	*Exc/Mas JWW – Walk/ Run 23 dogs; 16"
3:15 pm	Novice Std – Briefing/Walk/Walk/Run 29 dogs; 24"(6), 20"(12), 16"(6), 12"(3), 8"(1), 4"(1)	2:45 pm	*Exc/Mas JWW – Walk/Walk/Run 32 dogs; 12"(16), 8"(14), 4"(2) <b>Course Change</b>
* NO BRIEFING WILL BE HELD "WALK/WALK" = Split walk thru. Gate sheets will be marked to indicate where the groups split		3:55 pm	*Premier JWW – Walk/Run 19 dogs; 24C(1), 24"(4), 20"(10), 16"(1), 12"(2), 8"(0), 4"(1)

### Running Order, Saturday, November 28, 2020 (560 Total Runs)

Ring 1 - Christie Bowers		Ring 2 – Michael Teh	
APPROX. WALK TIME	No Briefing For T2B. SPLIT (2 Groups) Walk Thru Begins at 7:40 am; Judging Starts at 8:00 am;	APPROX. WALK TIME	Briefing and SPLIT (2 Groups) Walk-Thru at 7:40 a.m.; Judging starts at 8:15 a.m.
8:00 am	*T2B – Run 41 dogs; 24(9); 20"(32)	8:15 am	Exc/Mas FAST – Run 31 dogs; 16"(14), 12"(8), 8"(7), 4"(2)
8:40 am	*T2B-Walk/Run 26 dogs: 16"(7); 12"(11); 8"(8) <b>Course Change</b>	8:45 am	Ex/Mas FAST – Walk/Run 30 dogs; 24"(7), 20"(23)
9:35 am	*Premier Std – Walk/Walk/Run 30 dogs; 24C(1), 24"(4), 20"(15), 16"(3), 12"(3), 8"(2), 4"(2) <b>Course Change</b>	9:30 am	OPEN & NOV FAST – Briefing/Walk/Walk/Run 34 dogs; 24"(7), 20"(13), 16"(5), 12"(5), 8"(4) <b>Course Change</b>
10:45 am	*Exc/Mas Std – Walk/Walk/Run 55 dogs; 24C(1), 24"(11), 20"(43)	10:50 am	Novice JWW – Briefing/Walk/Walk/Run 30 dogs; 24"(5), 20"(17), 16"(3), 12"(4), 8"(1) - <b>Course Change</b>
12:20 pm	*Exc/Mas Std – Walk/Run 25 dogs; 16"	12:00 pm	Open JWW – Briefing/Walk/Walk/Run 30 dogs; 24"(3), 20"(14), 16"(7), 12"(2), 8"(4) <b>Course Change</b>
1:05 pm	*Exc/Mas Std – Walk/Walk/Run 33 dogs; 12"(17), 8"(14), 4"(2) <b>Course Change</b>	1:10 pm	*Exc/Mas JWW – Walk/Walk/Run 52 dogs; 24C(1), 24"(11), 20"(40)
2:25 pm	Open Std – Briefing/Walk/Run 23 dogs; 24(2), 20"(11), 16"(4), 12"(2), 8"(4) <b>Course Change</b>	2:25 pm	*Exc/Mas JWW – Walk/Run 24 dogs; 16"
3:30 pm	Novice Std – Briefing/Walk/Walk/Run 31 dogs; 24"(7), 20"(13), 16"(7), 12"(3), 8"(1)	3:05 pm	*Exc/Mas JWW – Walk/Walk/Run 36 dogs; 12"(18), 8"(16), 4"(2) <b>Course Change</b>
* NO BRIEFING WILL BE HELD "WALK/WALK" = Split walk thru. Gate sheets will be marked to indicate where the groups split		4:20 pm	*Premier JWW – Walk/Run 29 dogs; 24"(7), 20"(13), 16"(4), 12"(4), 8"(0), 4"(1)

## Running Order, Sunday, November 29, 2020 (422 Total Runs)

Ring 1 – Michael Teh		Ring 2 – Christie Bowers	
APPROX. WALK TIME	No Briefing For T2B. One Walk-Thru Begins at 7:45 am; Judging Starts at 8:00 am;	APPROX. WALK TIME	No Briefing for T2B. SPLIT (2 Groups) Walk-Thru at 7:40 a.m.; Judging starts at 8:15 a.m.
<b>8:00 am</b>	<b>*T2B-Run</b> 23 dogs: 16"(8); 12"(9); 8"(6) <b>Course Change</b>	<b>8:15 am</b>	<b>*T2B –Run</b> 42 dogs; 24(9); 20"(33) <b>Course Change</b>
8:40 am	<b>*Premier Std – Walk/Walk/Run</b> 30 dogs; 24"(4), 20"(15), 16"(2), 12"(5), 8"(2), 4"(2) <b>Course Change</b>	9:10 am	<b>Novice JWW – Briefing/Walk/Run</b> 28 dogs; 24"(5), 20"(13), 16"(4), 12"(3), 8"(3) - <b>Course Change</b>
9:50 am	<b>*Exc/Mas Std – Walk/Walk/Run</b> 51 dogs; 24"(11), 20"(40)	10:15 am	<b>Open JWW – Briefing/Walk/Run</b> 25 dogs; 24"(3), 20"(10), 16"(4), 12"(4), 8"(4) - <b>Course Change</b>
11:20 am	<b>*Exc/Mas Std – Walk/Run</b> 23 dogs; 16"	11:20 am	<b>*Exc/Mas JWW – Walk/Walk/Run</b> 49 dogs; 24"(11), 20"(38)
12:05 pm	<b>*Exc/Mas Std – Walk/Walk/Run</b> 31 dogs; 12"(17), 8"(12), 4"(2) <b>Course Change</b>	12:35 pm	<b>*Exc/Mas JWW –Walk/Run</b> 22 dogs; 16"
1:25 pm	<b>Open Std – Briefing/Walk/Run</b> 19 dogs; 24"(2), 20"(8), 16"(1), 12"(4), 8"(4) - <b>Course Change</b>	1:10 pm	<b>*Exc/Mas JWW – Walk/Walk/Run</b> 33 dogs; 12"(17), 8"(14), 4"(2) <b>Course Change</b>
2:25 pm	<b>Novice Std – Briefing/Walk/Run</b> 26 dogs; 24"(6), 20"(11), 16"(6), 12"(2), 8"(1)	2:20 pm	<b>*Premier JWW – Walk/Run</b> 20 dogs; 24"(3), 20"(12), 16"(0), 12"(4), 8"(0), 4"(1)

\* NO BRIEFING WILL BE HELD

“WALK/WALK” = Split walk thru. Gate sheets will be marked to indicate where the groups split

A LUNCH BREAK CAN BE TAKEN AT JUDGES’ DISCRETION; WALK THRUS CAN BE SPLIT AT JUDGE’S DISCRETION

**GO TO [WWW.NTXAGILITY.COM](http://WWW.NTXAGILITY.COM) FOR COMPLETE RESULTS EACH EVENING AND AFTER THE TRIAL**

.....  
**Unfortunately, by order of the Fire Marshal, space heaters are not allowed.**  
 .....



**PLEASE REMEMBER.....  
 ALWAYS PICK UP AFTER YOUR DOGS!**

**PLEASE KEEP THE TRIAL SITE  
 AND YOUR HOTEL SITE CLEAN!**



## MOTEL/RV PARK INFORMATION

**NOTE:** The club cannot guarantee that the hotels/motels listed below accept dogs. Please check regarding rates and dog acceptance policy when making reservations.

**Please inform management of your dogs when you book reservations and when you register. Motel dog regulations and fees may change without notice. The club cannot be responsible for any changes.**

### MCKINNEY:

La Quinta Inn & Suites McKinney  
6501 Henneman Way  
McKinney, TX 75070  
972-908-2370

Days Inn of McKinney  
2104 N. Central Expressway (Exit 41)  
McKinney, TX 75070  
972.548.8888

Motel 6 of McKinney  
2125 White Ave. (NB Exit 40B; SB Exit 41)  
McKinney, TX 75070  
972.542.8600

Quality Inn  
1300 N. Central Expressway  
McKinney, TX 75069  
972.547.9471  
\$25 per day deposit

### PLANO:

LaQuinta Inn of Plano  
1820 N. Central Expressway (Exit 29)  
Plano, TX 75074  
972.423.1300

Holiday Inn of Plano  
700 Central Parkway East (Exit 29)  
Plano, TX 75074  
972.398.9918

Motel 6 of Plano  
2550 N. Central Expressway (Exit 29)  
Plano, TX 75074  
972.578.1626

Best Western Park Suites of Plano  
640 Park Blvd. East (Exit 29)  
Plano, TX 75074  
972.578.2243

---

## RV INFO



### MYERS PARK

**Myers Park allows overnight parking for motor homes and/or travel trailers.** Electric hookups are available on the back parking lot. Parking is also allowed on the front parking lot with no hookups. Call **972-548-4792** to make arrangements. The main gate will not be locked at night. **Pay Myers Park personnel at the show site. The event committee cannot accept payment.**

**Exhibitors are responsible for cleaning up after their dogs immediately on hotel/motel and show grounds.**

Motels/hotels require that dogs be crated when unattended; no bathing or grooming of dogs in guest rooms. Exhibitors/handlers are responsible for any damages to motels/hotels or the event site and may result in disciplinary action by the Event Committee. Entries may be refused in the future for previous misuse of the motel facilities. This is an AKC-supported measure.

**PLEASE REMEMBER:** Hotels do not have to allow us to keep our dogs in the rooms. We are all responsible for insuring future pet acceptance at our favorite hotels. Please clean up after your dogs (inside and outside), keep them quiet so as not to disturb other guests, and generally be considerate of others. We all want to continue to have nice places to stay when we travel with our dogs.