

JUDGING PROGRAM

Desert Paws Obedience Club of Midland TX (Formerly Permian Basin Obedience Training Club) AKC All-Breed Agility Trial in Midland, Texas

Friday, Saturday, Sunday, June 7, 8, 9, 2019

EVENT NUMBERS 2019452501, 2019452502, 2019452503

The Horseshoe Arena

2514 Arena Trail, Midland, TX 79701

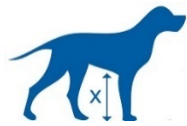
TO BE HELD INDOORS ON PACKED DIRT – AIR-CONDITIONED FACILITY

EVENT COMMITTEE EMERGENCY CONTACTS – Kim Cain - 432-638-4935



Check-In and Measuring Info

MEASURING



Exhibitors are required to have a valid Official Jump Height Card/Valid yellow form for each of their dogs and must be able to present it at any time if requested during the trial.

Unless an AKC rep comes to the trial, there will be not be a Measuring Official present. Measurements will not be official -- it will only get you through the weekend. If you are entered in Novice or Open, you do not have to get there early to be measured. It will be open all day. Measurements can be done before Novice or Open.

If your dog needs to be measured, it is **YOUR** responsibility to have a measurement done prior to running and failure to do so will result in the cancellation of any qualifying scores.

Armbands Not Required

Chapter 1, Section 19 of the Regulations for Agility Trials has been amended to eliminate the mandatory use of identifying stickers/armbands worn by agility exhibitors. DPOCM is not requiring armband stickers.

Traditional check-in is not required. Please check in at the gate on the gate sheet prior to your class.

CONCESSIONS NOT AVAILABLE

Concessions will **NOT** be available at the trial. Both fast food and restaurants are located within easy driving distance. **Please feel free to bring your own snacks, drinks and lunch.**

MOVE-UPS

Be sure to let the trial secretary know if you've earned a new title since you entered the trial so your dog can be moved up! Pre-trial move-ups must be submitted to the trial secretary via email **no later than 6:00 PM Monday, June 3. Day-to-Day Move-Ups are permitted** if you fill out a move-up form (available at the check-in table) and give it to the trial secretary at any time, but no later than 20 minutes after the last dog crosses the finish line on Friday for a Saturday move-up or on Saturday for a Sunday move-up.



Arrival & Setup

Exhibitors are allowed to set up beginning at 10:30 am on Friday, and at 7:00 am on Saturday and Sunday.

VETERINARIANS – ON CALL



Tall City Veterinary Hospital

4606 W Wall Street
Midland TC 79703
432-698-0026

Mon - Fri: 8:30AM to 6:00PM
Sat: 8:00AM to 12:00PM
Sun: Closed

EMERGENCY VETS

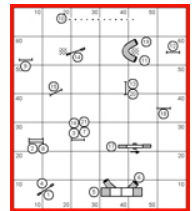
West Texas Emergency Vet Clinic
601 N Grandview, Odessa TX
(432)614-9204

Open 6 pm to 8 am Mon-Thurs,
Plus Open 24 hours from 6:00 pm Friday to
8:00 am Monday

Midland County Fire/Ambulance - 911

Running Order & Course Maps

The judge will supply course maps. Please take **ONE** copy of the map for the courses you are running so we will have sufficient copies for every exhibitor. Course maps and running orders



will be posted in a prominent area. Running orders will also be posted at the gate for your convenience in determining where you are located in the running order.

WANT TO HELP???

We need you! Please email Josie Gans at josiiegans@gmail.com if you have questions before the trial. You may also sign-up at the trial or contact Donna Merrill 432-770-1115 who will be getting workers in their chairs. **The trial will run faster if we don't have to yell for volunteers. It takes as many volunteers for a small trial as a big trial.**

**GO HERE AND SIGN UP WHERE
YOU WOULD LIKE TO
VOLUNTEER:**

<https://tinyurl.com/DPOCM-Volunteers>

Any and all assistance makes for a smoother running trial, so please check often to see how you can help! Water will be provided for workers, in addition to tickets for our worker-only raffle.

THANK YOU!

**Dogs may not be left in the
building overnight.**

Visit <http://www.ntxagility.com> for complete results after the trial

SPECIAL FUN....

FRIDAY, JUNE 7...

DÉJÀ NQ FUN RUNS

Special fun runs after each level of the Standard Classes using the same Standard course of the class that was just completed. Exhibitor must be entered in the Standard class that day to participate in the Déjà NQ non-regular class runs and can only run in the class they are entered in at the trial. Class will be scored according to rules for Standard classes. There will be a “judge” and a scribe and all scores will be recorded. A prize will be given to each 1st place dog in each jump height. One run per dog.

DAY-OF ENTRIES ONLY..... \$10.00 PER RUN

Sign up at the trial before your level of Standard classes start.

SATURDAY, JUNE 8...

RUN AND GUN IT

Jumps and Tunnels only fun runs will be held Saturday, June 8, 30 minutes after the last dog of the trial runs. The course will be scored according to **T2B** rules. There will be a “judge” and a scribe and all scores will be recorded.

A prize will be given to the fastest “qualifying” dog in each jump height. A handler may enter his/her dog as “exhibition only” in which case that dog would be ineligible for a prize. All dogs eligible to enter AKC licensed agility trials may participate

DAY-OF ENTRIES ONLY..... \$10.00 PER RUN

Each dog will run once before anyone can run again.

Sign up at the trial.



MAP AND DIRECTIONS TO TRIAL SITE FROM I-20...

WESTBOUND: Take **Exit 135** (Cotton Flat Road). The Horseshoe will be on the right.

EASTBOUND: Take **Exit 135** (Cotton Flat Road), cross over the Interstate.

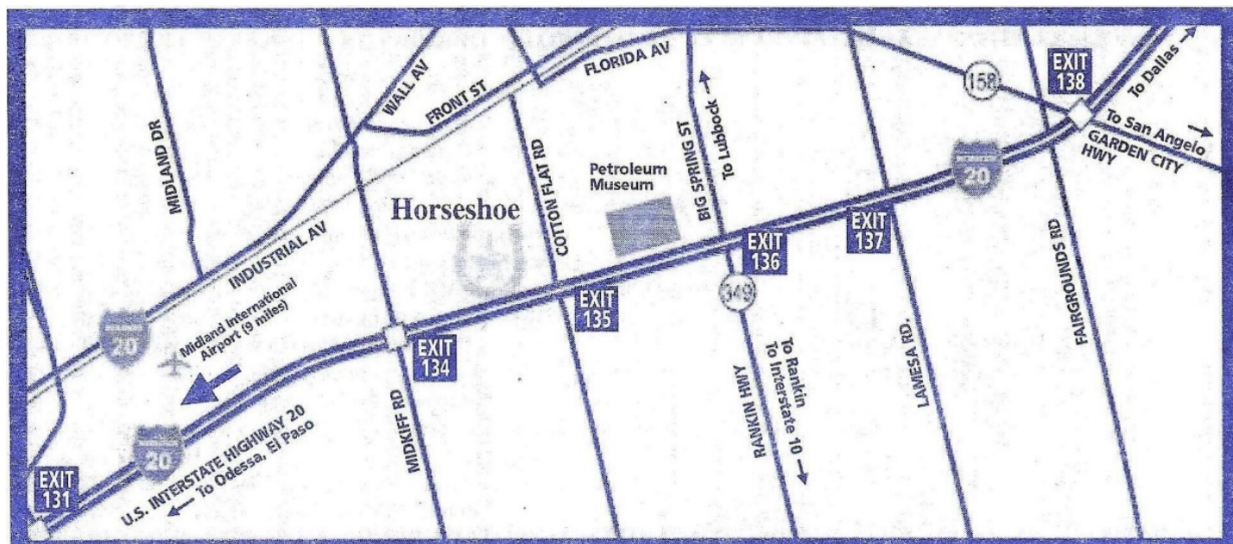
The Horseshoe will be on the left.

Building is located on the SW area of the facility – there will be signs directing you to where to park.

HORSESHOE ARENA, Main Building

2514 Arena Trail, Midland, TX 79701

(432) 682-1300





Desert Paws Obedience Club of Midland TX

JUDGING SCHEDULE

TIMES/RUNNING ORDER:

Please notify the Gate Stewards of any running conflicts.

CLASS COUNTS ARE CONTINGENT ON MOVE-UPS

NOT YET RECEIVED.

Rings will alternate.

Walk-Throughs Can Be Split At the Judge's Discretion; Lunch Break at the Judge's Discretion

ALL TIMES (except for the starting time for the first class each day) ARE ESTIMATES. Times are listed as a courtesy only to give competitors an IDEA of when the WALK THRU could begin. Exhibitors are responsible for being at the ring when their turn is called. Neither the Club nor the Judge will be responsible for the start times. Please plan your arrival accordingly.

FRIDAY, JUNE 7, 2019 TOTAL 256 RUNS Judging starts at 12:00 P.M. 1 ST BRIEFING AND WALK AT 11:40 AM		SATURDAY, JUNE 8, 2019 TOTAL 323 RUNS Judging starts at 9:00 A.M. 1 ST BRIEFING AND WALK AT 8:40 AM		SUNDAY, JUNE 9, 2019 TOTAL 272 RUNS Judging starts at 8:00 A.M. 1 ST BRIEFING AND WALK AT 7:40 AM	
Judge: Ms. Courtney Moore					
WALK-THRU TIMES ARE APPROXIMATE		WALK-THRU TIMES ARE APPROXIMATE		WALK-THRU TIMES ARE APPROXIMATE	
12:00 PM Ring 1 ALL FAST	EX/MAS/OPEN/NOV FAST: Run 54 dogs: 24C(1), 24"(4), 20"(22) RING CREW CHANGE ONLY. NO ADDITIONAL WALK THRU 16"(10), 12"(9), 8"(8) All Levels; All jump heights run together	9:00 AM Ring 1 ALL FAST	EX/MAS/OPEN/NOV FAST: Run 48 dogs: 24"(4), 20"(15) RING CREW CHANGE ONLY. NO ADDITIONAL WALK THRU 16"(11), 12"(11), 8"(7) All Levels; All jump heights run together	8:00 AM RING 1 T2B	Run 27 Dogs: 24"(1), 20"(9) RING CREW CHANGE ONLY. NO ADDITIONAL WALK THRU 16"(7), 12"(5), 8"(5)
	12:55 PM Ring 2 Ex/Mas JWW		Briefing/Walk/Run 36 Dogs: 24C(1), 24"(4), 20"(31) Walk/Run 44 Dogs: 16"(15), 12"(15), 8"(12), 4"(2)	9:55 AM Ring 2 PREMIER JWW	Briefing/Walk/Run 28 dogs: 24C(1), 24"(2), 20"(15), 16"(3), 12"(6), 8"(1)
2:50 PM Ring 1 Ex/Mas STD	Briefing/Walk/Run 35 Dogs: 24C(1), 24"(5), 20"(29) Walk/Run 41 Dogs: 16"(14), 12"(13), 8"(12), 4"(2) DÉJÀ NQ RUNS	10:45 AM Ring 1 PREMIER STD	Briefing/Walk/Run 33 dogs: 24C(1), 24"(2), 20"(16), 16"(5), 12"(7), 8"(1), 4"(1)	9:50 AM Ring 2 Ex/Mas JWW	Briefing/Walk/Run 37 Dogs: 24C(1), 24"(4), 20"(32) Walk/Run 41 Dogs: 16"(14), 12"(13), 8"(12), 4"(2)
5:15 PM Ring 2 Open JWW	Briefing/Walk/Run 12 dogs: 24"(3), 20"(3), 16"(2), 12"(2), 8"(1), 4"(1)	11:35 AM Ring 2 Ex/Mas JWW	Briefing/Walk/Run 39 Dogs: 24C(1), 24"(4), 20"(34) Walk/Run 45 Dogs: 16"(15), 12"(16), 8"(12), 4"(2)	11:40 AM Ring 1 Ex/Mas STD	Briefing/Walk/Run 35 dogs: 24C(1), 24"(5), 20"(29) Walk/Run 39 Dogs: 16"(13), 12"(11), 8"(13), 4"(2)
5:50 PM Ring 1 Open STD	Briefing/Walk/Run 13 dogs: 24"(2), 20"(6), 16"(2), 12"(2), 8"(1) DÉJÀ NQ RUNS	1:30 PM Ring 1 Ex/Mas STD	Briefing/Walk/Run 36 Dogs: 24C(1), 24"(5), 20"(30) Walk/Run 42 Dogs: 16"(14), 12"(14), 8"(12), 4"(2)	1:45 PM Ring 2 Open JWW	Briefing/Walk/Run 13 dogs: 24"(3), 20"(3), 16"(3), 12"(2), 8"(1), 4"(1)
6:40 PM Ring 2 Novice JWW	Briefing/Walk/Run 10 dogs: 20"(4), 16"(0), 12"(4), 8"(2)	3:40 PM Ring 2 Open JWW	Briefing/Walk/Run 13 dogs: 24"(3), 20"(3), 16"(3), 12"(2), 8"(1), 4"(1)	2:20 PM Ring 1 Open STD	Briefing/Walk/Run 13 dogs: 24"(2), 20"(6), 16"(2), 12"(2), 8"(1)
7:10 PM Ring 1 Novice STD	Briefing/Walk/Run 11 dogs: 20"(1), 16"(1), 12"(5), 8"(3), 4"(1) DÉJÀ NQ RUNS	4:15 PM Ring 1 Open STD	Briefing/Walk/Run 15 dogs: 24"(2), 20"(7), 16"(3), 12"(2), 8"(1)	2:55 PM Ring 2 Novice JWW	Briefing/Walk/Run 9 dogs: 20"(4), 16"(0), 12"(3), 8"(2)
		4:55 PM Ring 2 Novice JWW	Briefing/Walk/Run 10 dogs: 20"(4), 16"(0), 12"(4), 8"(2)	3:25 PM Ring 1 Novice STD	Briefing/Walk/Run 14 dogs: 20"(3), 16"(2), 12"(4), 8"(4), 4"(1)
		5:25 PM Ring 1 Novice STD	Briefing/Walk/Run 14 dogs: 20"(3), 16"(2), 12"(5), 8"(3), 4"(1)		
		Run 'N Gun It Fun Runs			

Visit <http://www.ntxagility.com> for complete results after the trial

Exhibitors are expected to maintain hotel premises and their dogs in a quiet, clean and well-kept manner and for cleaning up after their dogs immediately on hotel/motel and show grounds. Motels/hotels require that dogs be crated when unattended; no bathing or grooming of dogs in guest rooms. Exhibitors/handlers are responsible for any damages to motels/hotels or the event site and may result in disciplinary action by the Trial Committee. Entries may be refused in the future for previous misuse of the motel facilities.



Complaints lodged against any exhibitor will be under the auspices of our Trial Committee and reported to the AKC. This is an AKC-supported measure.

MOTEL/RV PARK INFORMATION



NOTE: The club cannot guarantee that the hotels/motels listed below accept dogs. Please check regarding rates and dog acceptance policy when making reservations.

Please inform management of your dogs when you book reservations and when you register. Motel dog regulations and fees may change without notice. The club cannot be responsible for any changes.

PLEASE CHECK THE HOTEL WEBSITES FOR UP-TO-DATE RATES.

RECOMMENDED:

Motel 6, 1800 Beal Pkwy, Midland, TX 79703	432-262-0044
Newly Built – MAKE RESERVATIONS EARLY!	

La Quinta Inn & Suites North, 2606 North Loop 250 West,
Midland, TX 79707

This hotel has implemented a pet fee, two-dog limit, and a weight limit on the dogs.

1-866-527-1498

PLEASE CHECK WITH THE HOTEL FOR DETAILS

La Quinta Inn, 4130 W. Wall St., Midland, TX 79703
Remodeled

432.697.9900

Days Inn**, 3904 W Wall Street, Midland, TX 79703

432-694-7774

PLEASE REMEMBER: Hotels do not have to allow us to keep our dogs in the rooms. **WE** are all responsible for insuring future pet acceptance at our favorite hotels. Please clean up after your dogs (inside and outside), keep them quiet so as not to disturb other guests, and generally be considerate of others. We all want to continue to have nice places to stay when we travel with our dogs.

RV RESERVATIONS



RV HOOKUPS ARE AVAILABLE AT THE TRIAL SITE AT A COST OF \$25/NIGHT W/ELECTRICITY AND WATER.

ELECTRICITY IS 30 AMPS AND 50 AMPS. A DUMP STATION IS AVAILABLE ON SITE.

CONTACT: 432-682-1300 ESA@MIDLANDHORSESHOE.COM

PLEASE DISCUSS ANY SPECIAL NEEDS WITH THE FACILITY PERSONNEL.