

JUDGING PROGRAM

Desert Paws Obedience Club of Midland TX
(Formerly Permian Basin Obedience Training Club)
AKC All-Breed Agility Trial in Midland, Texas

Friday, Saturday, Sunday, June 10, 11, 12, 2022
EVENT NUMBERS 2022452501, 2022452502, 2022452503

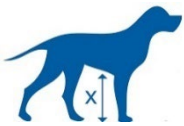
The Horseshoe Arena
2514 Arena Trail, Midland, TX 79701

TO BE HELD INDOORS ON PACKED DIRT – AIR-CONDITIONED FACILITY

EVENT COMMITTEE EMERGENCY CONTACT – Laurie Williams - (432) 413-2076



CHECK-IN & MEASUREMENTS



All agility dogs are required to have an Official Jump Height Card.

Our Judge, Catherine Clifton, is a Measuring Official (VMO). ALL dogs (regardless of height) without a valid Jump Height Card or Yellow "Temporary Measurement" Form (for dogs under 2 years old) must be measured before their first run of the weekend. Forms will be available at the ribbon-label table. Please fill out a form before requesting to be measured. If you already have a permanent height card, be sure to have it with you at the trial in case you are asked for it.

If your dog needs to be measured, it is your responsibility to have it done before you run. Failure to do so will result in removal of any qualifying runs you receive.

Armbands Not Required

Chapter 1, Section 19 of the Regulations for Agility Trials has been amended to eliminate the mandatory use of identifying stickers/armbands worn by agility exhibitors. DPOCM is not requiring armband stickers.

Please check in at the gate on the gate sheet prior to your class.

CONCESSIONS NOT AVAILABLE

Concessions will **NOT** be available at the trial. Both fast food and restaurants are located within easy driving distance.

Please feel free to bring your own snacks, drinks and lunch.

Potluck salad lunch on Saturday for everyone. Please bring a dish if you can!

Sunday DPOC will provide pizza at lunch for everyone!

MOVE-UPS

Be sure to let the trial secretary know if you've earned a new title since you entered the trial so your dog can be moved up! Pre-trial move-ups must be submitted to the trial secretary via email **no later than 6:00 PM Monday, June 6.** **Day-to-Day Move-Ups are permitted** if you fill out a move-up form (available at the check-in table) and give it to the trial secretary at any time, but no later than 20 minutes after the last dog crosses the finish line on Friday for a Saturday move-up or on Saturday for a Sunday move-up.



Arrival & Setup

Exhibitors are allowed to set up beginning at 10:00 am on Friday, and at 7:30 am on Saturday and at 7:00 am on Sunday.

VETERINARIANS – ON CALL

Animal Clinic at Mission Square
4400 N Big Spring, C-42
Midland, TX 79705
(432)687-4118

Mon-Fri: 7:30AM to 6:00PM
Sat & Sun: Closed

EMERGENCY VETS

Legacy Animal Emergency Hospital
2304 W Wadley Ave
Midland, TX 79705
(432) 247-1425
Open 24 Hours

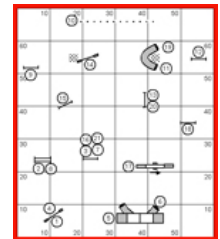
Midland County Fire/Ambulance - 911

Dogs may not be left in the building overnight.

Course Maps

Course maps will be posted at the trial site.

There will be some printed copies of course maps for exhibitors. Exhibitors may also take a picture of the posted course maps.



WANT TO HELP???

We need you! Please email Beth Johnson at agilityaussie@gmail.com if you have questions before the trial. You may also sign-up at the trial. The trial will run faster if we don't have to yell for volunteers. It takes as many volunteers for a small trial as a big trial.

GREAT WORKER RAFFLE PRIZES INCLUDING AIRPODS, AIRTAGS, AND FREE TRIAL ENTRY!

GO HERE AND SIGN UP WHERE YOU WOULD LIKE TO VOLUNTEER:

<https://tinyurl.com/DPOCM-Volunteers>

Any and all assistance makes for a smoother running trial, so please check often to see how you can help! Water will be provided for workers, in addition to tickets for our worker-only raffle.

THANK YOU!

IMPORTANT NOTE:

There is No SOUTH door access to the arena floor. The south hallway entrance is available, but all crating will be on the north end of the arena ONLY. We recommend everyone enter through WEST or NORTH doors directly to the arena.

IMPORTANT -- JUDGE CHANGE...

Unfortunately, Ronda Bermke is not able to judge the trial. Fortunately, **Catherine Clifton** has graciously agreed to take the assignment. Thank you, Catherine!!

Exhibitors have the right to request a full refund of their entry fee for any classes affected. Exhibitors must submit requests in writing to the Trial Secretary a minimum of 30 minutes preceding the start of the event on the first day in which the exhibitor is entered.



Potluck salad lunch on Saturday for everyone. **Please bring a dish if you can!** Sunday DPOC will provide pizza at lunch for everyone!



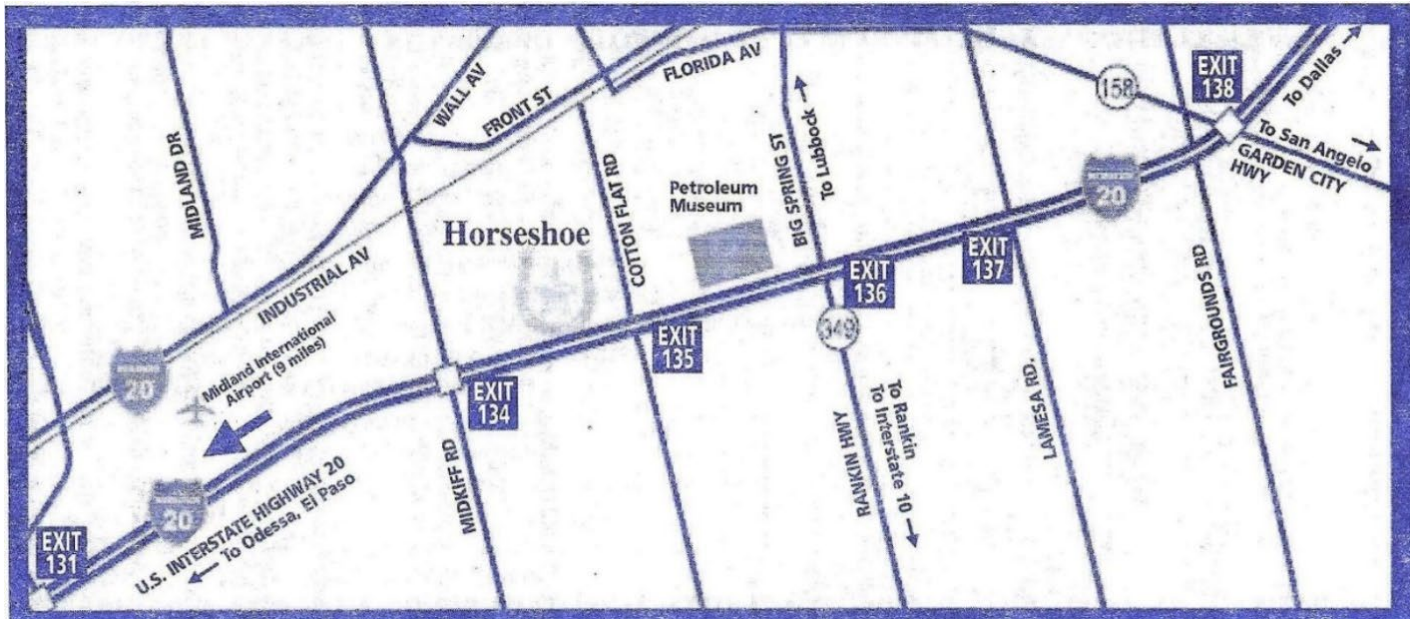
MAP AND DIRECTIONS TO TRIAL SITE FROM I-20...

WESTBOUND: Take **Exit 135** (Cotton Flat Road). The Horseshoe will be on the right.

EASTBOUND: Take **Exit 135** (Cotton Flat Road), cross over the Interstate. The Horseshoe will be on the left.

Building is located on the SW area of the facility – there will be signs directing you to where to park.

HORSESHOE ARENA, Main Building
2514 Arena Trail, Midland, TX 79701
(432) 682-1300



ATTENTION RVers... PLEASE SEE THE IMPORTANT INFORMATION CONCERNING RV SPOTS ON THE LAST PAGE OF THIS JUDGING PROGRAM



Desert Paws Obedience Club of Midland TX JUDGING SCHEDULE

TIMES/RUNNING ORDER:

Please notify the Gate Stewards of any running conflicts.

CLASS COUNTS ARE CONTINGENT ON MOVE-UPS NOT YET RECEIVED.

ALL TIMES (except for the starting time for the first class each day) ARE ESTIMATES. Times are listed as a courtesy only to give competitors an IDEA of when the WALK THRU could begin. Exhibitors are responsible for being at the ring when their turn is called. Neither the Club nor the Judge will be responsible for the start times. Please plan your arrival accordingly.

Rings will alternate.

Walk-Throughs Can Be Split at the Judge's Discretion; Lunch Break at the Judge's Discretion

FRIDAY, June 10, 2022 TOTAL 242 RUNS		SATURDAY, June 11, 2022 TOTAL 309 RUNS		SUNDAY, June 12, 2022 TOTAL 278 RUNS	
Judging starts at 12:00 NOON BRIEFING AND SPLIT WALK AT 11:35 AM 24"-20" (23 DOGS) WALK FIRST; 16"-4" (37 DOGS) WALK SECOND		Judging starts at 8:30 A.M. BRIEFING AND SPLIT WALK AT 8:05 AM 24"-20" (26 DOGS) WALK FIRST; 16"-4" (32 DOGS) WALK SECOND		Judging starts at 8:00 A.M. BRIEFING AND SPLIT WALK AT 7:35 AM 24"-20" (28 DOGS) WALK FIRST; 16"-8" (26 DOGS) WALK SECOND	
Judge: Ms. Catherine Clifton					
TIMES LISTED ARE APPROXIMATE WALK-THRU TIMES					
12:00 NOON (Run Time) Ring 1 ALL FAST	EX/MAS/OPEN/NOV FAST: Run 60 dogs: 24"(4), 20"(18) RING CREW CHANGE ONLY. NO ADDITIONAL WALK THRU 16"(20), 12"(10), 8"(6), 4"(2) All Levels; All jump heights run together	8:30 AM (Run Time) Ring 1 ALL FAST	EX/MAS/OPEN/NOV FAST: Run 58 dogs: 24"(4), 20"(21) RING CREW CHANGE ONLY. NO ADDITIONAL WALK THRU 16"(16), 12"(11), 8"(5), 4"(1) All Levels; All jump heights run together	8:00 AM (Run Time) RING 1 T2B	Run 54 dogs: 24"(3), 20"(24) RING CREW CHANGE ONLY. NO ADDITIONAL WALK THRU 16"(12), 12"(8), 8"(7)
1:05 PM Ring 2 Ex/Mas JWW	Briefing/Walk/Run 25 Dogs: 24"(3), 20"(22) **Walk 16"(25); Followed by **Walk 12"(9), 8"(7), 4"(3) Run 44 Dogs (16"-4")	9:30 AM Ring 2 PREMIER JWW	Briefing/Walk/Run 27 dogs: 24"(1), 20"(14), 16"(9), 12"(1), 8"(2)	9:00 AM Ring 2 PREMIER JWW	Briefing/Walk/Run 28 dogs: 24"(1), 20"(14), 16"(9), 12"(2), 8"(2)
2:55 PM Ring 1 Ex/Mas STD	Briefing/Walk/Run 29 Dogs: 24"(3), 20"(26) **Walk 16"(24), Followed by **Walk 12"(10), 8"(7), 4"(2) Run 43 Dogs: (16"-4")	10:15 AM Ring 1 PREMIER STD	Briefing/Walk/Run 25 dogs: 24"(1), 20"(14), 16"(7), 12"(0), 8"(3)	10:45 AM Ring 2 Ex/Mas JWW	Briefing/Walk/Run 25 Dogs: 24"(3), 20"(22) **Walk 16"(21), Followed by **Walk 12"(8), 8"(7), 4"(2) Run 38 Dogs (16"-4")
5:10 PM Ring 2 Open JWW	Briefing/Walk/Run 16 dogs: 24"(1), 20"(8), 16"(1), 12"(4), 8"(2)	11:00 AM Ring 2 Ex/Mas JWW	Briefing/Walk/Run 28 Dogs: 24"(3), 20"(25) **Walk 16"(24), Followed by **Walk 12"(10), 8"(8), 4"(3) Run 45 Dogs (16"-4")	12:30 PM Ring 1 Ex/Mas STD	Briefing/Walk/Run 30 Dogs: 24"(3), 20"(27) **Walk 16"(20), Followed by **Walk 12"(9), 8"(7), 4"(1) Run 37 Dogs (16"-4")
5:50 PM Ring 1 Open STD	Briefing/Walk/Run 12 dogs: 24"(1), 20"(3), 16"(2), 12"(4), 8"(2)	12:55 PM Ring 1 Ex/Mas STD	Briefing/Walk/Run 33 Dogs: 24"(3), 20"(30) **Walk 16"(23), Followed by **Walk 12"(11), 8"(8), 4"(2) Run 44 Dogs (16"-4")	2:40 PM Ring 2 Open JWW	Briefing/Walk/Run 16 dogs: 24"(1), 20"(8), 16"(1), 12"(4), 8"(1), 4"(1)
6:25 PM Ring 2 Novice JWW	Briefing/Walk/Run 7 dogs: 24"(1), 20"(2), 16"(1), 12"(2), 8"(1)	3:05 PM Ring 2 Open JWW	Briefing/Walk/Run 17 dogs: 24"(1), 20"(9), 16"(1), 12"(4), 8"(1), 4"(1)	3:15 PM Ring 1 Open STD	Briefing/Walk/Run 14 dogs: 24"(1), 20"(4), 16"(2), 12"(4), 8"(2), 4"(1)
7:00 PM Ring 1 Novice STD	Briefing/Walk/Run 6 dogs: 24"(1), 20"(2), 16"(1), 12"(1), 8"(1)	3:40 PM Ring 1 Open STD	Briefing/Walk/Run 14 dogs: 24"(1), 20"(4), 16"(2), 12"(4), 8"(2), 4"(1)	3:55 PM Ring 2 Novice JWW	Briefing/Walk/Run 7 dogs: 24"(1), 20"(3), 16"(1), 12"(2), 8"(0)
**SPLIT WALK-THRUS FOR 16" AND 12"-4" IN EX/MAS STD & JWW RESULTS IN NO 5 MINUTE WAIT AFTER 12"-4" WALK-THRU GROUP. FIRST 16" DOG ON THE LINE IMMEDIATELY AFTER 12"-4" WALK-THRU.		4:20 PM Ring 2 Novice JWW	Briefing/Walk/Run 9 dogs: 24"(1), 20"(4), 16"(1), 12"(2), 8"(1)	4:25 PM Ring 1 Novice STD	Briefing/Walk/Run 6 dogs: 24"(1), 20"(3), 16"(1), 12"(1), 8"(0)
		4:50 PM Ring 1 Novice STD	Briefing/Walk/Run 19 dogs: 24"(1), 20"(5), 16"(1), 12"(1), 8"(1)		

Visit <http://www.ntxagility.com> for complete results after the trial

Exhibitors are expected to maintain hotel premises and their dogs in a quiet, clean and well-kept manner and for cleaning up after their dogs immediately on hotel/motel and show grounds.

Motels/hotels require that dogs be crated when unattended; no bathing or grooming of dogs in guest rooms. Exhibitors/handlers are responsible for any damages to motels/hotels or the event site and may result in disciplinary action by the Trial Committee. Entries may be refused in the future for previous misuse of the motel facilities.



Complaints lodged against any exhibitor will be under the auspices of our Trial Committee and reported to the AKC. This is an AKC-supported measure.

PLEASE REMEMBER: Hotels do not have to allow us to keep our dogs in the rooms. **WE** are all responsible for ensuring future pet acceptance at our favorite hotels. Please clean up after your dogs (inside and outside), keep them quiet so as not to disturb other guests, and generally be considerate of others. We all want to continue to have nice places to stay when we travel with our dogs



MOTEL/RV PARK INFORMATION

NOTE: The club cannot guarantee that the hotels/motels listed below accept dogs. Please check regarding rates and dog acceptance policy when making reservations.

Please inform management of your dogs when you book reservations and when you register. Motel dog regulations and fees may change without notice. The club cannot be responsible for any changes.

PLEASE CHECK THE HOTEL WEBSITES FOR UP-TO-DATE RATES.

Motel 6, 1800 Beal Pkwy, Midland, TX 79703 Newly Built – MAKE RESERVATIONS EARLY!	432-262-0044
My Place Hotel Midland 401 East I-20 Midland, TX 79701 15% discount off rooms on June 9-11, 2022 for DPOC exhibitors. They have two kinds of rooms: 1 queen bed w/recliner & 2 Queen beds.	432-684-3711
La Quinta Inn & Suites North, 2606 North Loop 250 West Midland, TX 79707 This hotel has implemented a pet fee, two-dog limit, and a weight limit on the dogs. PLEASE CHECK WITH THE HOTEL FOR DETAILS	1-866-527-1498
Microtel Inn & Suites by Wyndham Midland 200 West Longview Avenue Midland TX 79701	432-203-2100
Baymont by Wyndham Midland Airport, 3312 Fortress Drive, Midland TX 79706 A \$50 deposit is required for the stay, it will be returned after check-out if the room is not damaged or soiled by the pet. This will be done at time of check out (plan accordingly timewise). Please show a copy of your trial confirmation to verify you are participating in the dog trial. The facility is altering their normal pet rules for our exhibitors.	432-561-8000
La Quinta Inn, 4130 W. Wall St., Midland, TX 79703 No Pet Fee - Remodeled	432.697.9900
Four Points by Sheraton 5518 Starboard Dr. Midland, TX 79706	(432) 704-5300



RV RESERVATIONS

RV HOOKUPS ARE AVAILABLE AT THE TRIAL SITE AT A COST OF \$35/NIGHT W/ELECTRICITY AND WATER.

ELECTRICITY IS 30 AMPS AND 50 AMPS. A DUMP STATION IS AVAILABLE ON SITE.

IMPORTANT: THE RV SPOTS ARE NOW BEING LOCKED. YOU MUST ARRANGE TO HAVE ONE UNLOCKED PRIOR TO 5:00 PM ON THURSDAY OR FRIDAY. IF YOU PLAN TO ARRIVE AFTER 5 PM, PLEASE EMAIL BBURKE@MCOUNTY.COM AHEAD OF TIME WITH ESTIMATED ARRIVAL TIME SO AN RV SPOT CAN BE ASSIGNED AND UNLOCKED AND ARRANGEMENTS CAN BE MADE FOR PAYMENT THE NEXT DAY.

CONTACT: BRITTANY BURKE

432-682-1300

BBURKE@MCOUNTY.COM

PLEASE DISCUSS ANY SPECIAL NEEDS WITH THE FACILITY PERSONNEL.