



WATT ARENA  
WILL ROGERS MEMORIAL  
CENTER

3201 Burnett Tandy Dr.

Fort Worth, TX 76107

# DALMATIAN CLUB OF NORTH TEXAS

## AKC AGILITY TRIAL JUDGING PROGRAM

Saturday, Sunday  
June 17 and 18, 2023

EVENT NUMBERS 2023568104, 2023568105

Indoor, **COLD** Air-Conditioned Arena with Packed Dirt Surface  
Bring your sweatshirts!

**EVENT COMMITTEE EMERGENCY CONTACT JUDY RAVEN, CHAIRPERSON – 817-800-0668**

### Measuring



All agility dogs are required to have an Official Jump Height Card and must be able to present it if asked. Don't forget

to bring your height card in case someone asks for it.

**There will not be a VMO (Measuring Official) at the trial unless an AKC Rep comes (not expected).** ALL dogs (except dogs jumping 24") without a valid Jump Height Card or Yellow "Temporary Measurement" Form (for dogs under 2 years old) must be measured by one of the judges before their first run of the weekend to make sure you are entered in the correct jump height. The judges can measure in between classes all day. Be sure to allow enough time prior to your first run to get a measurement.

### ARBAND STICKERS NOT REQUIRED

Pursuant to Chapter 1, Section 19 of the Regulations for Agility Trials (Revised July 2016), The Club will not be requiring the use of armband stickers.

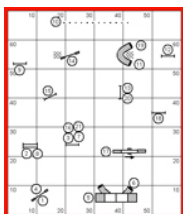
**We will be using the Agility Gate App for check-in on your phone or tablet.... See Page 2 for more information.**

### Concessions...

...Will be available during the trial. Breakfast and lunch will be served at the concession stand on the concourse level. Sorry, outside food is not allowed.



### Running Orders and Course Maps



Course maps will be posted at the trial site per AKC rules. Maps for each day will be posted on Agility Gate after midnight the night before. Some printed maps might

be available during the trial.

### Arrival/Setup

There is no early set up on Friday. You may begin setting up at 6:30 am on Saturday and Sunday.



**IMPORTANT: Unloading/Loading on Sat. & Sun. will NOT be permitted through the overhead door on the west side of the arena. Unloading/Loading will have to be done through the north doors/ramps to the arena on Burnett-Tandy Drive.**

### Veterinarians (On Call)

The PARC  
4801 West Freeway  
Fort Worth, TX 76107  
(817) 731-3733

Open 24 hours; 7 days

DIRECTIONS TO THE PARC: Exit the show site by going left on Trail Dr. Turn south (right) on University Dr to I-30 W. In approximately 8/10 of a mile, turn right onto West Freeway. Merge onto I-30 West. In approx. .23 miles, take Exit 10 toward Hulen St. Stay on West Freeway and exit (turn left) onto Merrick St. Turn left over freeway and turn left onto the Eastbound service road. The PARC is located on the south side of I-30 east of Merrick Street. (Approximately 5-10 minutes from show site).on the right.

### Move-Ups:

The pretrial move-up deadline is **Monday, June 12 at 6:00 pm.** Please email the trial secretary on or before that date/time for a move up for the trial.

[trialecretary@ntxagility.com](mailto:trialecretary@ntxagility.com)

Day-to-day move-ups are permitted at the trials. You must fill out a move-up form (available at the check-in table) at any time, but no later than 20 minutes after the last dog crosses the finish line on Saturday (for a Sunday move-up). Please give all move-up forms to the trial secretary.



### Please consider volunteering

Agility trials cannot exist without help from the exhibitors.

we  volunteers

Volunteering will not conflict with your runs because you sign up when you can work!

All workers get tickets to the Workers Only raffle. There is a new raffle each day! Water and Snacks will be provided for workers.

**BONUS!!!!** Volunteers who agree to stay and work the last class in each ring on Sunday will be eligible for a special gift card drawing!!

Go Here To Sign Up For Volunteer Opportunities!

<https://tinyurl.com/DCNT-Workers>

MANY THANKS FROM THE DCNT AGILITY TRIAL COMMITTEE!!

VOLUNTEER COORDINATOR: Summer Palmer: [summerdpalmer@gmail.com](mailto:summerdpalmer@gmail.com)

**DOGS MAY NOT BE LEFT IN THE BUILDING OVERNIGHT**

We will be utilizing the **AGILITY GATE APP** for the exhibitors' convenience.

Agility Gate is a free-to-download app that allows competitors to check-in their dogs via their mobile phone or tablet at an agility show and keep track of the current state of the run orders. It helps prevent crowding around the gate and allows competitors to keep tabs on things while crating away from the ring.

**The access code is 1010**

Course maps will be posted on the Agility Gate App each evening after Midnight prior to the trial.  
In the meantime, go here...

[http://dogagility.info/agility\\_gate/](http://dogagility.info/agility_gate/)

to read all about it, what it does, how to download it to your phone or tablet and how to use it.

**BE SURE TO CHECK IN EACH MORNING FOR ALL YOUR CLASSES!  
IF YOU NEED TO BE MARKED ABSENT, YOU CAN DO THAT TOO - FROM HOME!!**

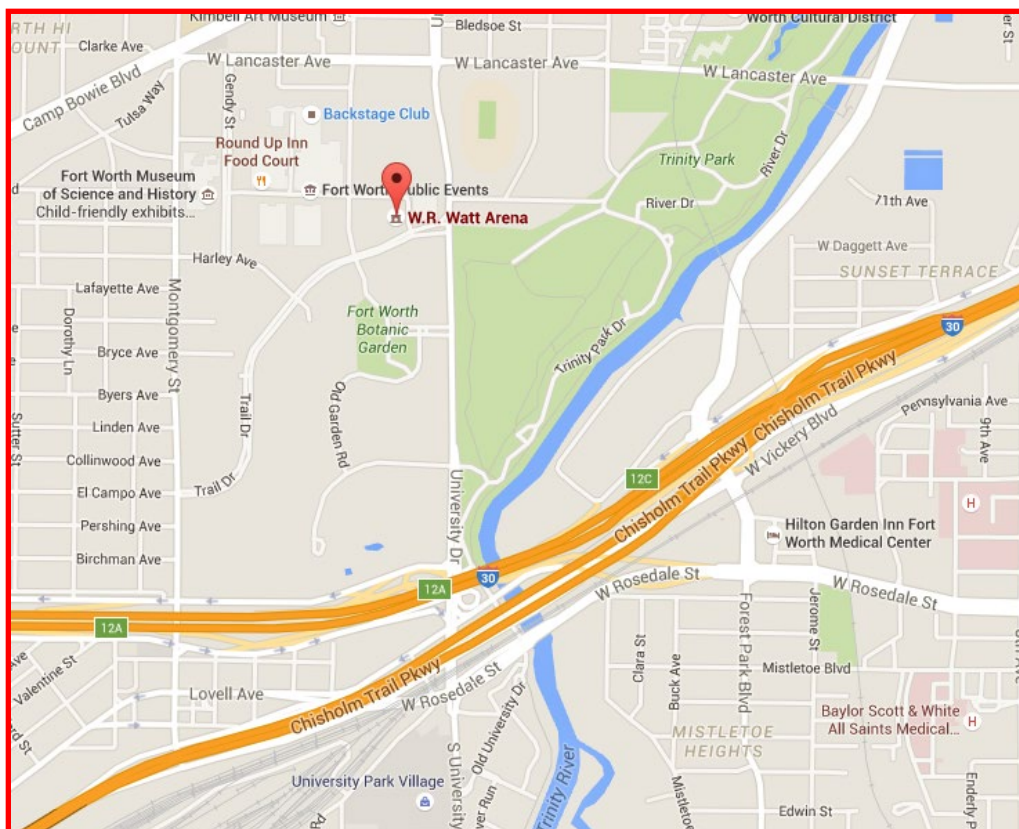
## **PARKING AT WATT ARENA**

**WATT ARENA CHARGES A \$12.00 PARKING FEE EACH DAY.** This is a City of Fort Worth fee, not a club fee. **Park at your own risk.** The club is not responsible for theft or damage. **Please do not leave dogs or any valuables in your vehicle at any time.** *The Trial Committee reserves the right to take whatever measures are necessary to rescue animals in distress.* Purchase your daily or multi-day parking pass at the gate.

**Security & RV Parking:** Please see information below on RV/motor homes. **Dogs may NOT be left in the building overnight.**

## **The Trial Site**

From Interstate 30 just west of downtown Fort Worth, take the UNIVERSITY DR NORTH ramp around and turn left (North) on University Drive. Go .6 miles (6/10 of a mile) to the light at Harley Drive. Turn left onto Harley Drive. The building ahead on the right is Watt Arena.





# DALMATIAN CLUB OF NORTH TEXAS

## TIMES/RUNNING ORDER

**TIMES/RUNNING ORDER: Please mark conflicts on Agility Gate and notify the Gate Stewards of any running conflicts. Conflicts will be handled on a case-by-case basis. Class Counts Are Contingent On Move-Up Changes Not Yet Received Rings will run concurrently.**

Class Counts Are Contingent On Move-Up Requests Not Yet Received. Rings will run concurrently.

## CHECK IN THROUGH AGILITY GATE

Walk-Thrus Can Be Split at Judges' Discretion; Lunch Can Be Taken at Judges' Discretion

**ALL TIMES (except for the starting times each day) ARE ESTIMATES. TIMES ARE LISTED AS A COURTESY ONLY TO GIVE COMPETITORS AN IDEA OF WHEN THE CLASS WALK-THRUS COULD BEGIN. Exhibitors are responsible for being at the ring when their turn is called. Neither the Club nor the Judges will be responsible for the start times. Please plan your arrival accordingly.**

### Running Order, Saturday, June 17, 2023 (612 Total Runs)

APPROX. WALK TIME	RING 1 – Ms. Katrina Walters – Briefing and Walk-Thru begins at 7:40 am. Judging starts at 8:00 a.m.	APPROX. WALK-TIME	RING 2 – Ms. Lavonda Herring - Briefing and Walk-Thru begins at 7:40 am. Judging starts at 8:45 a.m. Course will be open for walking during 24"-20" T2B
<b>8:00 AM</b> (Run Time)	T2B – Run 40 dogs: 24"(12), 20"(28)	<b>8:45 AM</b> (Run Time)	ALL FAST - Run 44 Dogs: 24"(11), 20"(33) All Levels of FAST walk/run together
8:40 AM	T2B – Walk/Run 42 dogs: 16"(19), 12"(10), 8"(11), 4"(2) <b>Course Change</b>	9:30 AM	ALL FAST – Walk/Run 53 Dogs: 16"(25), 12"(16), 8"(11), 4"(1) All Levels of FAST walk/run together <b>Course Change</b>
9:55 AM	Premier STD –Briefing/Walk/Run 44 Dogs: 24C(1), 24"(6), 20"(12), 16"(15), 12"(5), 8"(4), 4"(1) <b>Course Change</b>	10:55 AM	Novice JWW – Briefing/Walk/Run 21 dogs: 24"(3), 20"(7), 16"(2), 12"(4), 8"(4), 4"(1) <b>Course Change</b>
11:15 AM	EX/MAS STD – Briefing/Walk/Run 51 Dogs: 24C(1), 24"(16), 16"(34)	11:55 AM	Open JWW -- Briefing/Walk/Run 28 dogs: 24"(3), 20"(13), 16"(5), 12"(5), 8"(1), 4"(1) <b>Course Change</b>
12:45 PM	EXC/MAS STD –Walk/Run 40 dogs: 20"	1:05 PM	EX/MAS JWW - Briefing/Walk/Run 51 Dogs: 24C(1), 24"(16), 16"(34)
1:50 PM	EXC/MAS STD –Walk/Run 44 dogs: 12"(23), 8"(16), 4"(5) <b>Course Change</b>	2:20 PM	EXC/MAS JWW – Walk/Run 37 dogs: 20"
3:15 PM	Open STD – Briefing/Walk/Run 22 dogs: 24"(1), 20"(9), 16"(4), 12"(3), 8"(2), 4"(3) <b>Course Change</b>	3:15 PM	EXC/MAS JWW – Walk/Run 44 dogs: 12"(22), 8"(17), 4"(5) <b>Course Change</b>
4:25 PM	Novice STD – Briefing/Walk/Run 21 dogs: 24"(4), 20"(9), 16"(2), 12"(3), 8"(3)	4:30 PM	Premier JWW – Briefing/Walk/Run 30 dogs: 24"(4), 20"(9), 16"(10), 12"(3), 8"(3), 4"(1)

### Running Order, Sunday, June 19, 2022 (515 Total Runs)

APPROX. WALK TIME	RING 1 – Ms. Lavonda Herring -- Briefing and Walk-Thru begins at 7:40 am. Judging starts at 8:00 a.m.	APPROX. WALK TIME	RING 2 – Ms. Katrina Walters - Briefing and Walk-Thru begins at 7:40 am. Judging starts at 8:35 a.m. Course will be open for walking during 24"-20" T2B
<b>8:00 AM</b> (Run Time)	T2B – Run 36 dogs: 24"(9), 20"(27)	<b>8:35 AM</b> (Run Time)	ALL FAST - Run 38 Dogs: 24"(9), 20"(29) All Levels of FAST walk/run together
8:35 AM	T2B – Walk/Run 31 dogs: 16"(13), 12"(7), 8"(9), 4"(2) <b>Course Change</b>	9:15 AM	ALL FAST – Walk/Run 37 Dogs: 16"(17), 12"(10), 8"(9), 4"(1) All Levels of FAST walk/run together <b>Course Change</b>
9:35 AM	Premier STD –Briefing/Walk/Run 41 Dogs: 24"(8), 20"(12), 16"(11), 12"(5), 8"(6), 4"(1) <b>Course Change</b>	10:25 AM	Novice JWW – Briefing/Walk/Run 16 dogs: 24"(2), 20"(6), 16"(1), 12"(3), 8"(3), 4"(1) <b>Course Change</b>
10:50 AM	EX/MAS STD – Briefing/Walk/Run 43 Dogs: 24C(1), 24"(15), 16"(27)	11:20 AM	Open JWW -- Briefing/Walk/Run 18 dogs: 24"(2), 20"(9), 16"(3), 12"(2), 8"(1), 4"(1) <b>Course Change</b>
12:10 PM	EXC/MAS STD –Walk/Run 40 dogs: 20"	12:20 PM	EX/MAS JWW - Briefing/Walk/Run 43 Dogs: 24C(1), 24"(15), 16"(27)
1:15 PM	EXC/MAS STD –Walk/Run 38 dogs: 12"(18), 8"(15), 4"(5) <b>Course Change</b>	1:30 PM	EXC/MAS JWW – Walk/Run 38 dogs: 20"
2:35 PM	Open STD – Briefing/Walk/Run 16 dogs: 24"(0), 20"(6), 16"(3), 12"(2), 8"(2), 4"(3) <b>Course Change</b>	2:25 PM	EXC/MAS JWW – Walk/Run 39 dogs: 12"(18), 8"(16), 4"(5) <b>Course Change</b>
3:30 PM	Novice STD – Briefing/Walk/Run 19 dogs: 24"(4), 20"(8), 16"(1), 12"(3), 8"(3)	3:35 PM	Premier JWW – Briefing/Walk/Run 22 dogs: 24C(1), 24"(3), 20"(6), 16"(6), 12"(2), 8"(3), 4"(1)

**RESULTS WILL BE POSTED EACH EVENING OF THE TRIAL AT [WWW.NTXAGILITY.COM](http://WWW.NTXAGILITY.COM)**



## MOTEL INFORMATION

**NOTE:** The club cannot guarantee that the hotels/motels listed below accept dogs. Please check regarding rates and dog acceptance policy when making reservations.



Please inform management of your dogs when you book reservations and when you register. Motel dog regulations and fees may change without notice. The club cannot be responsible for any changes.

**NOTE:** Please check regarding rates and dog acceptance policy and/or applicable pet fees when making reservations. Motel dog regulations & fees change without notice & the Club cannot be responsible for changes. For further information on accommodations contact Fort Worth Chamber of Commerce online at [www.fortworthcog.org](http://www.fortworthcog.org), then search "motels". Please inform management of your dogs when you book reservations and when you register.

<b>LaQuinta Inn &amp; Suites City View</b> .....	<b>817.370.2700</b>
4900 Bryant Irvin Rd, Fort Worth TX 76132	
<b>LaQuinta Inn &amp; Suites – Lake Worth</b> .....	<b>817.900-3814</b>
5800 Quebec, Fort Worth TX 76315	
<b>Residence Inn by Marriott</b> .....	<b>817.885-8250</b>
2500 Museum Way @ 7th St, Fort Worth, TX 76107-3053	
<b>Stay Express Hotel Fort Worth</b> .....	<b>817.534.4801</b>
2000 Beach St @ I-30, Fort Worth, TX 76103-2319	
<b>Americas Best Value Inn Fort Worth</b> .....	<b>817.244.9446</b>
8345 West Freeway, Fort Worth, TX 76116-3441	
<b>Days Inn</b> .....	<b>817.349-6651</b>
8500 West Freeway, I-30 & Las Vegas Trail, Fort Worth, TX 76108	
<b>Motel 6</b> .....	<b>817.246.7168</b>
7960 West Freeway, Fort Worth, TX, 76108	



## RV PARKING

There are RV hookups and a dump station in the lot south of Harley at Montgomery Street and in the area next to the Swine Building; NO RESERVATIONS – first come, first served. **Contact Will Rogers Memorial Complex, 1 Amon Carter Square, Fort Worth TX 76107, 817-392-7469, for information and payment.** After hours only: Call 817-991-8497

## PLEASE BE AWARE....

**Exhibitors are responsible for cleaning up after their dogs immediately on hotel/motel and show grounds.** Motels/hotels require that dogs be crated when unattended; no bathing or grooming of dogs in guest rooms. Exhibitors/handlers are responsible for any damage to motels/hotels or the event site and may result in disciplinary action by the Event Committee. Entries may be refused in the future for previous misuse of the motel or show facilities. This is an AKC-supported measure.

**PLEASE REMEMBER:** Hotels do not have to allow us to keep our dogs in the rooms. We are all responsible for insuring future pet acceptance at our favorite hotels. Please clean up after your dogs (inside and outside), keep them quiet so as not to disturb other guests, and generally be considerate of others. We all want to continue to have nice places to stay when we travel with our dogs.

**PLEASE.....**

**ALWAYS PICK UP AFTER YOUR  
DOGS!**

**PLEASE KEEP THE TRIAL SITE AND  
YOUR HOTEL SITE CLEAN!**

