



FLAT-COATED RETRIEVER SOCIETY OF AMERICA

Member of the American Kennel Club

MARCH 29, 30, 31, 2019

EVENT NOS. 2019146009, 2019146010 & 2019146011

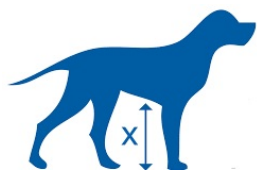
AKC AGILITY TRIAL JUDGING PROGRAM

MYERS PARK & EVENT CENTER, 7117 County Road 166, McKinney, TX 75071

To Be Held Indoors on Packed Dirt (Non-Climate-Controlled Facility)

EMERGENCY CONTACT: FRANCES POWRIE: 214.478.2461

Measuring



All agility dogs are required to have an Official Jump Height Card and must be able to present it if asked. Don't forget to bring your height card in case someone asks for it. **There will be not be a Measuring Official at this trial unless an AKC Rep is present (not expected.)** Measurements will not be official -- it will only get you through the weekend. All exhibitors who checked on the entry form that their dog needs to be measured must be measured before running (unless you're jumping 24"). If you are entered in Novice or Open, you do not have to get there early to check-in. It will be open all day. We will do measurements before either Novice or Open. It is the exhibitor's responsibility to have their dog measured prior to running.

Check-In

ARMBANDS NOT REQUIRED

Chapter 1, Section 19 of the Regulations for Agility Trials has been amended to eliminate the mandatory use of identifying stickers/armbands worn by agility exhibitors. The Club is not requiring armband stickers.

Traditional check-in is not necessary. Please check in at the gate on the gate sheet prior to your class.

Veterinarians (On Call)

McKinney Animal Hospital
4630 W Eldorado
Pkwy McKinney, TX
972.548.0749
M-F 7AM-6PM
Sat 8 AM-12PM



Emergency Animal Hospital of Collin County
10225 Custer Rd, Plano, TX
214.547.9900
M-Th 6PM-6AM
Fri. 6 PM-12 AM
Sat-Sun 12AM-12 AM (24 hr.)



Agility Trials simply cannot happen without volunteers. Please give back to the sport you love!

Please volunteer!

Experience is not necessary. If you are new to working, we will train you – the jobs are very easy! Volunteering will not conflict with your runs! Pick your own schedule with link below!

Volunteers will be given a lunch voucher.
And will have access to drinks and snacks.

WORKER-ONLY RAFFLE – DRAWING AT 1:00 PM ON SUNDAY!!

If you have questions about volunteering, please contact: Frances Powrie
franpowrie@verizon.net

GO HERE TO FILL YOUR NAME IN SLOTS TO VOLUNTEER:

<https://tinyurl.com/FCRSA-Workers>

There's a tab at the bottom for each day.



Arrival/Setup

There will be no early exhibitor setup on Thursday, March 28 except for volunteers helping to unload the trailer at 1:00 pm Thursday. You may set up on Thursday IF you help unload the trailer. Thank you!

The building opens at 6:30 a.m. all three days.

**Dogs May Not Be Left
In the Building Overnight.**

Move-Ups:

The pretrial move-up deadline is Monday, March 25 at 6:00 pm. Please email the trial secretary on or before that date/time for a move up for the trial.

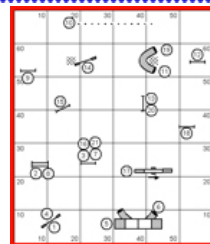


ntxagility@verizon.net

Day-to-day move-ups are permitted at the trials. You must fill out a move-up form (available at the check-in table) at any time, but no later than 20 minutes after the last dog crosses the finish line on Friday (for a Saturday move-up) or Saturday (for a Sunday move-up). Please give all move-up forms to the trial secretary.

Concessions

There **WILL NOT** be a concession stand available this weekend. Be sure to bring your own food, snacks, drinks, etc. There are fast food locations nearby. Lunch and snacks will be provided for volunteers.



RUNNING ORDERS AND COURSE MAPS

Each judge will supply course maps. **Please take ONE copy so we will have sufficient copies for every exhibitor.** Running orders will be posted in the spectator area on the south side of the rings and at the gate.

LOOK....

Be Sure To Visit Tamarrah Wild for Massage Therapy for your pups!

John Frick and Mark Kmiecik will be taking action shots of the dogs and will post the pictures on their website for **FREE** download.

<https://tinyurl.com/FCRSAPictures>

Please give them a few days to get the pictures processed and posted.

Fundraiser Raffle for Emily and Lyra

Local Texas Junior Handler Emily Walker was selected to be on the 2019 AKC European Open Junior Agility Team USA with her 22 month old Miniature Poodle, Lyra! They will be heading to Switzerland to compete against other Junior Handlers from around the world with the rest of the 18 teams and 20 dogs selected to represent the United States of America this July! Please consider supporting this young North Texas team and helping them get to Switzerland!



Tickets- 1 for \$1

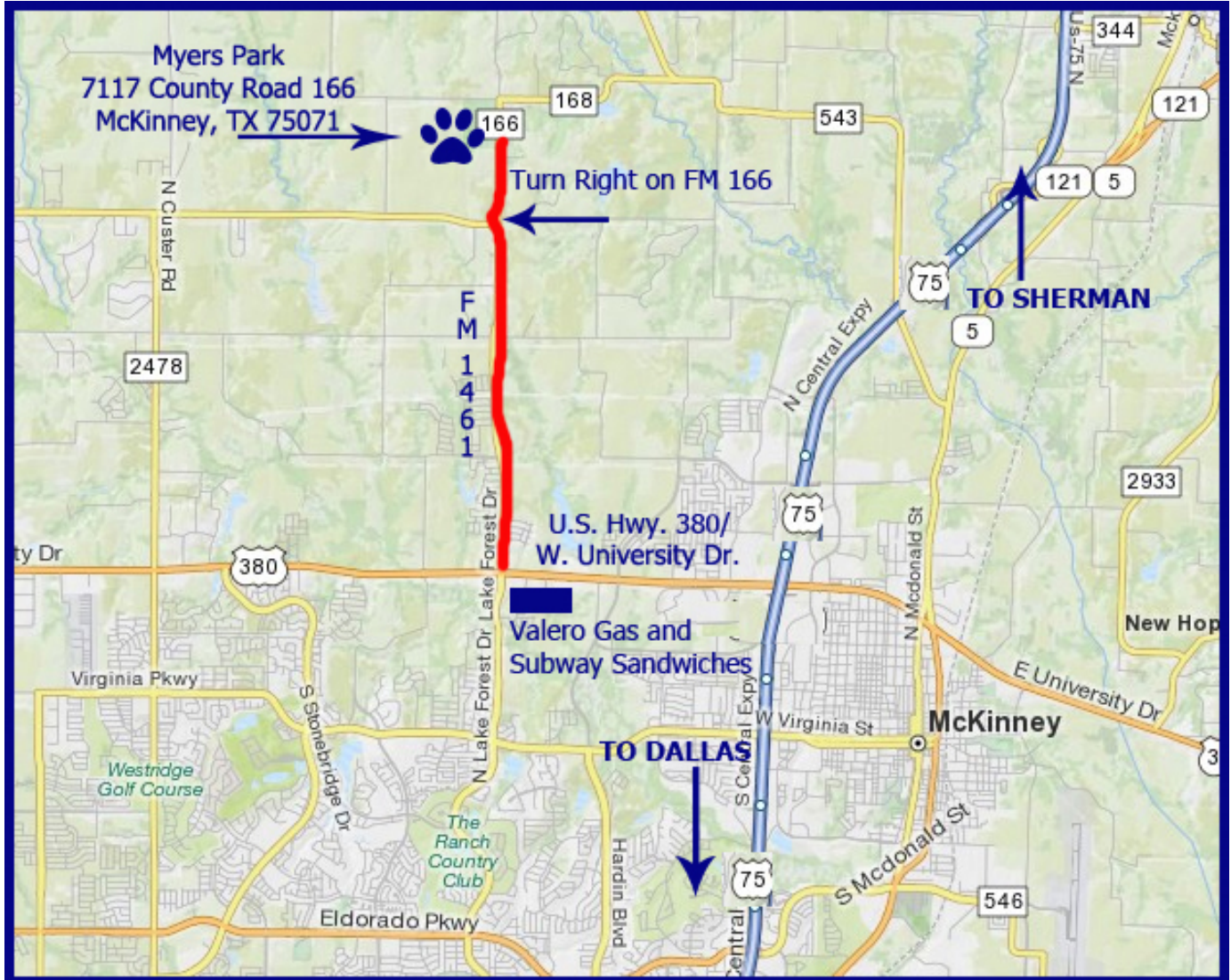
6 for \$5

Wingspan for \$20

Drawing will be Sunday after the Masters classes are done!

The Trial Site

The town of McKinney is about 33 miles northeast of downtown Dallas on U.S. 75/North Central Expressway. From the north or south: On U.S. 75, take the U.S. 380 exit and go west about 2.5 miles to FM 1461. Turn right (north) on FM 1461 and travel approximately 2.8 miles to County Road 166. Turn right (north) on County Road 166 and go about 0.8 miles (8/10 of a mile) to the site which is on the left.





FLAT-COATED RETRIEVER SOCIETY OF AMERICA

TIMES/RUNNING ORDER: Please notify the Gate Stewards of any running conflicts. Conflicts will be handled on a case-by-case basis.

Class Counts Are Contingent On Move-Up Changes Not Yet Received
Rings will run concurrently.

PLEASE CHECK THE CLASS ORDER AND YOUR RUNNING ORDER CAREFULLY

ALL TIMES (except for the starting times each day) ARE ESTIMATES.

TIMES ARE LISTED AS A COURTESY ONLY TO GIVE COMPETITORS AN IDEA OF WHEN THE CLASS WALK-THRUS COULD BEGIN.

Neither the Club nor the Judges will be responsible for the start times. Please plan your arrival accordingly.

Running Order, Friday, March 29, 2019 (341 Total Runs)

RING 1 - Judge: Christie Bowers		RING 2 - Judge: Michael Teh	
APPROX. TIME	JOINT BRIEFING AND WALK THRU BEGIN AT 8:40 AM	APPROX. TIME	JOINT BRIEFING AND WALK THRU BEGIN AT 8:40 AM RING 2 WILL BE OPEN FOR WALKING DURING T2B
9:00 AM	T2B – Run 29 dogs; 8"(6), 12"(3), 16"(4), 20"(15), 24"(1) COURSE CHANGE	9:30 AM	Run 41 Dogs - EX/MAS, OPEN & NOVICE FAST RUN TOGETHER: 8"(5), 12"(4), 16"(6), 20"(23), 24"(3) Course Change
9:45 AM	PREMIER STD Briefing/Walk/Run 23 dogs; 8"(2), 12"(5), 16"(3), 20"(9), 24"(4) COURSE CHANGE	10:30 AM	JWW NOVICE – Walk/Run 14 dogs; 8"(0), 12"(1), 16"(3), 20"(7), 24"(3) - Course Change
10:40 AM	STD EXC/MAS Briefing/Walk/Run 33 dogs: 4"(2), 8"(13), 12"(18)	11:20 AM	JWW OPEN – Walk/Run 19 dogs; 8"(2), 12"(0), 16"(5), 20"(10), 24"(2) - Course Change
11:35 AM	STD EXC/MAS Walk/Run 25 dogs: 16"(16), 24"(9)	12:10 PM	JWW EXC/MAS – Walk/Run 32 dogs; 4"(2), 8"(12), 12"(18)
12:20 PM	STD EXC/MAS Walk/Run 32 dogs: 20(32) COURSE CHANGE	12:55 PM	JWW EXC/MAS – Walk/Run 25 dogs; 16"(16), 24"(9),
1:30 PM	STD OPEN Briefing/Walk/Run 18 dogs; 8"(0), 12"(0), 16"(4), 20"(8), 24"(6) COURSE CHANGE	1:35 AM	JWW EXC/MAS – Walk/Run 28 dogs; 20" Course Change
2:25 PM	STD NOVICE: Briefing/Walk/Run 11 dogs: 8"(0), 12"(2), 16"(2), 20(7)	2:50 PM	PREMIER JWW – Walk/Run 11 dogs; 8"(1), 12"(1), 16"(1), 20"(6), 24"(1)

Running Order, Saturday, March 30, 2019 (509 Total Runs)

RING 1 - Judge: Michael Teh		RING 2 - Judge: Christie Bowers	
APPROX. TIME	JOINT BRIEFING AND WALK THRU BEGIN AT 7:40 AM	APPROX. TIME	JOINT BRIEFING AND WALK THRU BEGIN AT 7:40 AM RING 2 WILL BE OPEN FOR WALKING DURING T2B
8:00 AM	T2B – Run 43 dogs; 8"(5), 12"(6), 16"(6), 20"(24), 24"(2) COURSE CHANGE	8:30 AM	Run 64 Dogs - EX/MAS, OPEN & NOVICE FAST RUN TOGETHER: 8"(4), 12"(6), 16"(14), 20"(35), 24"(5) Course Change
9:00 AM	PREMIER STD Briefing/Walk/Run 35 dogs; 8"(4), 12"(6), 16"(9), 20"(10), 24"(6) COURSE CHANGE	9:55 AM	JWW NOVICE – Walk/Run 23 dogs; 8"(1), 12"(0), 16"(5), 20"(14), 24"(3) - Course Change
10:05 AM	STD EXC/MAS Briefing/Walk/Run 40 dogs: 4"(2), 8"(12), 12"(26)	10:50 AM	JWW OPEN – Walk/Run 24 dogs; 8"(3), 12"(0), 16"(6), 20"(11), 24"(4) - Course Change
11:00 AM	STD EXC/MAS Walk/Run 39 dogs: 16"(25), 24"(14)	11:45 AM	JWW EXC/MAS – Walk/Run 40 dogs; 4"(2), 8"(11), 12"(27)
12:05 PM	STD EXC/MAS Walk/Run 48 dogs: 20" COURSE CHANGE	12:40 PM	JWW EXC/MAS – Walk/Run 37 dogs; 16"(23), 24"(14),
1:35 PM	STD OPEN Briefing/Walk/Run 24 dogs; 8"(0), 12"(1), 16"(4), 20"(12), 24"(7) COURSE CHANGE	1:30 PM	JWW EXC/MAS – Walk/Run 46 dogs; 20" Course Change
2:35 PM	STD NOVICE: Briefing/Walk/Run 14 dogs: 8"(1), 12"(0), 16"(3), 20"(10)	2:45 PM	PREMIER JWW – Walk/Run 32 dogs; 8"(3), 12"(9), 16"(5), 20"(10), 24"(5)

WALK-THRUS CAN BE SPLIT FURTHER AT JUDGES' DISCRETION.

LUNCH BREAK MAY BE TAKEN AT JUDGES' DISCRETION.

ALL RESULTS WILL BE POSTED AT: WWW.NTXAGILITY.COM

ALL TIMES (except for the starting times each day) ARE ESTIMATES.

TIMES ARE LISTED AS A COURTESY ONLY TO GIVE COMPETITORS AN IDEA OF WHEN THE CLASS WALK-THRUS COULD BEGIN.

Neither the Club nor the Judges will be responsible for the start times. Please plan your arrival accordingly.

Running Order, Sunday, March 31, 2019 (426 Total Runs)

PLEASE NOTE CHANGE IN RUNNING ORDER IN EX/MAS JWW FROM OTHER DAYS IN RING 2

RING 1 - Judge: Christie Bowers		RING 2 - Judge: Michael Teh	
APPROX. TIME	JOINT BRIEFING AND WALK THRU BEGIN AT 7:40 AM	APPROX. TIME	JOINT BRIEFING AND WALK THRU BEGIN AT 7:40 AM
8:00 AM	T2B Run 19 dogs; 8"(7), 12"(6), 16"(6)	8:00 AM	T2B -Run 31 dogs; 20"(27), 24"(4)
8:35 AM	PREMIER STD Briefing/Walk/Run 35 dogs; 8"(2), 12"(7), 16"(7), 20"(15), 24"(4) COURSE CHANGE	8:45 AM	JWW NOVICE - Walk/Run 23 dogs; 8"(3), 12"(0), 16"(4), 20"(14), 24"(2) - Course Change
9:40 AM	STD EXC/MAS Briefing/Walk/Run 35 dogs; 4"(1), 8"(10), 12"(24)	9:40 AM	JWW OPEN - Walk/Run 18 dogs; 8"(1), 12"(0), 16"(6), 20"(9), 24"(2) - Course Change
10:40 AM	STD EXC/MAS Walk/Run 38 dogs; 16"(23), 24"(15)	10:30 AM	JWW EXC/MAS - Walk/Run 46 dogs; 20"
11:45 AM	STD EXC/MAS Walk/Run 46 dogs; 20" COURSE CHANGE	11:30 AM	JWW EXC/MAS - Walk/Run 36 dogs; 4"(1), 8"(10), 12"(25)
1:15 PM	STD OPEN Briefing/Walk/Run 20 dogs; 8"(0), 12"(1), 16"(4), 20"(11), 24"(4) COURSE CHANGE	12:20 PM	JWW EXC/MAS - Walk/Run 34 dogs; 16"(21), 24"(13) Course Change
2:10 PM	STD NOVICE: Briefing/Walk/Run 18 dogs; 8"(3), 12"(0), 16"(3), 20"(12)	1:25 PM	PREMIER JWW - Walk/Run 27 dogs; 8"(2), 12"(5), 16"(6), 20"(11), 24"(3)

WALK-THRUS CAN BE SPLIT FURTHER AT JUDGES' DISCRETION.

LUNCH BREAK MAY BE TAKEN AT JUDGES' DISCRETION.

ALL RESULTS WILL BE POSTED AT: [WWW.NTXAGILITY.COM](http://www.NTXAGILITY.COM)



A COUPLE OF IMPORTANT NOTES....



Exhibitors are responsible for cleaning up after their dogs immediately on hotel/motel and show grounds. Motels/hotels require that dogs be crated when unattended; no bathing or grooming of dogs in guest rooms. Exhibitors/handlers are responsible for any damages to motels/hotels or the event site and may result in disciplinary action by the Event Committee. Entries may be refused in the future for previous misuse of the motel facilities. This is an AKC-supported measure.

PLEASE REMEMBER: Hotels do not have to allow us to keep our dogs in the rooms. We are all responsible for insuring future pet acceptance at our favorite hotels. Please clean up after your dogs (inside and outside), keep them quiet so as not to disturb other guests, and generally be considerate of others. We all want to continue to have nice places to stay when we travel with our dogs.

Motel/RV Park Information

NOTE: The club cannot guarantee that the hotels/motels listed below accept dogs. Please check regarding rates and dog acceptance policy when making reservations.

Please inform management of your dogs when you book reservations and when you register. Motel dog regulations and fees may change without notice. The club cannot be responsible for any changes.



MCKINNEY:

La Quinta Inn & Suites McKinney
6501 Henneman Way
McKinney, TX 75070
972-908-2370

Days Inn of McKinney
2104 N. Central Expressway (Exit 41)
McKinney, TX 75070
972.548.8888

Quality Inn
1300 N. Central Expressway
McKinney, TX 75069
972.547.9471
\$25 per day deposit

Motel 6 of McKinney
2125 White Ave. (NB Exit 40B; SB Exit 41)
McKinney, TX 75070
972.542.8600

PLANO:

LaQuinta Inn of Plano
1820 N. Central Expressway (Exit 29)
Plano, TX 75074
972.423.1300

Holiday Inn of Plano
700 Central Parkway East (Exit 29)
Plano, TX 75074
972.398.9918

Motel 6 of Plano
2550 N. Central Expressway (Exit 29)
Plano, TX 75074
972.578.1626

Best Western Park Suites of Plano
640 Park Blvd. East (Exit 29)
Plano, TX 75074
972.578.2243



RV SITES

MYERS PARK

Myers Park allows overnight parking for motor homes and/or travel trailers. Electric is available in the back parking lot. Hookups are not available if you choose to set up in the front parking lot. \$15/night (more for electric in the back)— Call **972-548-4792** to make arrangements. The main gate will not be locked at night. **If you park in the front parking lot, you may NOT park in front of The Landing (small building to the north of the show barn). You must park in front of the Show Barn or the Stall Barn only.** Please pay Myers Park personnel at the show site. The event committee cannot accept payment.

MELISSA

Lighthouse RV Resort
1020 N. US 75 (NB Exit 45; SB Exit 44)
Melissa, TX 75454
972.838.4600

PRINCETON

Hidden Acres RV Park
10364 CR 740 West
Princeton, TX 75407
972.736.1264; Call for directions