



JUDGING PROGRAM

Great Dane Club of America

Great Dane National Specialty
AKC Agility Trial in Broken Arrow, OK

GREAT DANES ONLY

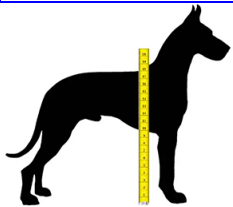
Two Trials, One Day - Wednesday, October 12, 2022

EVENT NUMBERS: 2022067104, 2022067105

McClain County Expo Center
2101 Hardcastle Blvd
Purcell, OK 73080

**Trial is indoors on packed dirt.
The building is not climate-controlled.**

EVENT COMMITTEE EMERGENCY CONTACT – Barbara Bristol - 214-763-6899 (CELL)



Measuring Info

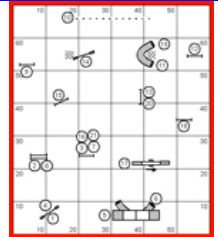
All agility dogs are required to have an Official Jump Height Card. **Our judge is not a VMO (measuring official)**, so official measurements will not be required for these trials only since all dogs are jumping 24" or 20" Preferred.

PRE-TRIAL MOVE-UPS

Be sure to let the trial secretary know if you've earned a new title since you entered the trial so your dog can be moved up! Pre-trial move-ups must be submitted to the trial secretary via email **no later than 6:00 PM Wednesday, October 5.**

Running Order & Course Maps

The judge will supply course maps. Please take **ONE** copy of the map for the courses you are running so we will have sufficient copies for every exhibitor. Course maps and running orders will be posted in a prominent area. Running orders will also be posted at the gate for your convenience in determining where you are located in the running order.



Armband Stickers Not Required

Pursuant to Chapter 1, Section 19 of the Regulations for Agility Trials (Revised July 2016), GDCA will not be requiring the use of armband stickers, so traditional check-in is not required.

Trial-to-Trial move-ups are permitted at the trials. You must fill out a move-up form (available at the check-in table) at any time, but no later than 10 minutes after your New Title run. Please give all move-up forms to the trial secretary.

WANT TO HELP???

We wish to thank all those who have volunteered to help at this trial!

Be sure to check in on the Gate Sheet in your ring prior to running.

AGILITY INVITATIONAL EVENT

If you are able to help, please contact Barbara Bristol, Volunteer Coordinator, at bbdane@gmail.com

Arrival & Setup

Exhibitors are allowed to set up from 3:00 pm to 7:00 pm on Tuesday October 11. The building will be open again at 7:30 am on Wednesday. The building will be locked overnight. There is no overnight security guard.



Ten of the top competitors in Agility (Novice, Novice Preferred, Open, Open Preferred, Excellent, Excellent Preferred, Master, & Master Preferred) have been invited to participate in this exciting special attraction. Each dog will need to enter both the Standard class & Jumpers With Weaves class in the GDCA National Specialty designated trial. The Invitational placements will be based on the combined scores of the two classes entered with the winner in each class being acknowledged as 2022 GDCA Novice, Novice Preferred, Open, Open Preferred, Excellent, Excellent Preferred, Master, or Master Preferred Agility Invitational Champion. All Invitational competitors will receive a personalized rosette showing their 2022 Invitational participation for the class.

Any and all assistance makes for a smoother running trial, so please check with her often to see how you can help!

Volunteer duties will not interfere with running your dog.

Even if you didn't send in a volunteer form, your services could be needed. Please ask! THANK YOU!

CONCESSIONS

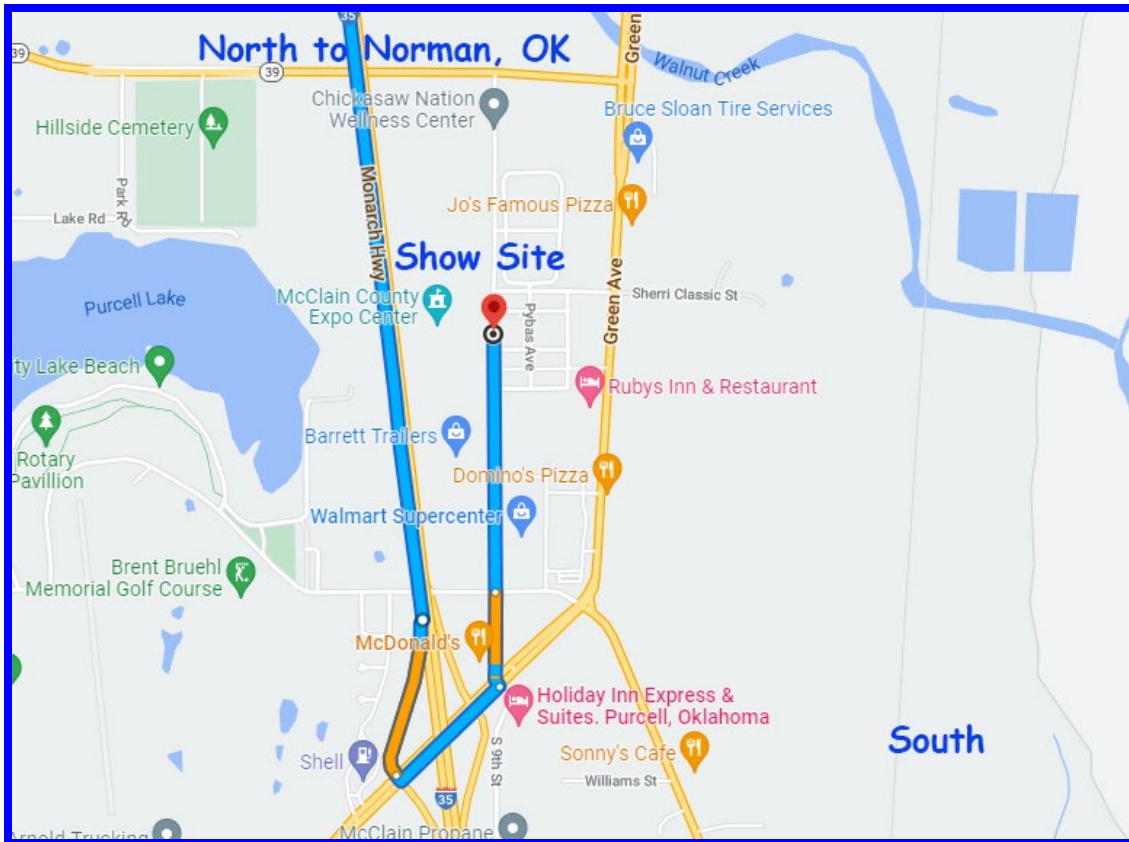
Concessions will not be available at the show site, so please feel free to bring your own snacks and drinks. Fast food restaurants are available nearby.

For additional information, contact Traci Rinoldo at danegyri@lifebytes.net

Dogs may not be left in the building overnight

DIRECTIONS TO THE TRIAL SITE

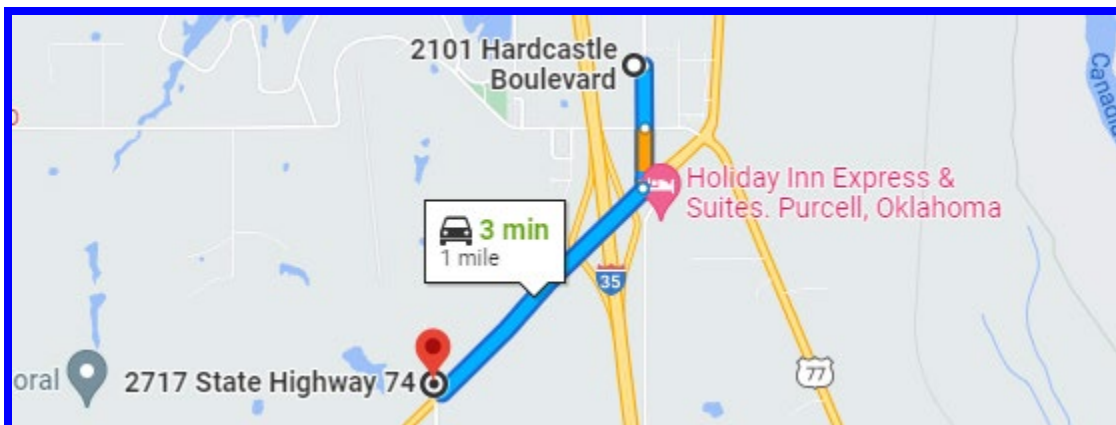
DIRECTIONS FROM EMBASSY SUITES, NORMAN, OK: Travel South on I-35. Take Exit 91, for OK-74 toward OK-39/Purcell/Maysville. Drive to Hardcastle Blvd. APPROXIMATELY 30 MINUTES.



Veterinarians (On Call)

Walnut Creek Animal Hospital
2717 OK-74
Purcell, OK 73080
(405) 527-8734

Mon - Fri: 7:30AM - 5:30PM





Great Dane Club of America

JUDGING SCHEDULE

TIMES/RUNNING ORDER:
Please notify the Gate Stewards of any running conflicts.

**CLASS COUNTS ARE CONTINGENT ON MOVE-UPS
NOT YET RECEIVED.**

Walk-Throughs Can Be Split At the
Judge's Discretion

Lunch Break at the Judge's Discretion

Classes To Be Held In Two Rings

ALL TIMES (except for the starting time for the first class of the day)
ARE ESTIMATES
Times are listed as a courtesy only to give competitors an IDEA of when the classes/walk thrus COULD begin. Exhibitors are responsible for being at the ring when their turn is called. Neither the Club nor the Judge will be responsible for the start times. Please plan your arrival accordingly.

Judge: **Ms. Pamela "Candy" Nettles**

WEDNESDAY, OCTOBER 12, 2022

TRIAL 1: TOTAL 31 RUNS

TRIAL 2: TOTAL 33 RUNS

Judging starts at 9:00 A.M.

1ST BRIEFING/WALK AT 8:40 AM

**APPROX.
WALK TIME:**

ALL WALK TIMES ARE ESTIMATES (except for starting time for the first class of the day)

RING 1 9:00 AM (Run Time)	Trial 1 T2B	Run 8 Dogs: 20"(6), 24"(2)
RING 2 9:10 AM	Trial 1 JWW Exc/Mas	Briefing/Walk/Run 5 Dogs: 20"(4), 24"(1)
RING 1 9:30 AM	Trial 1 Standard Exc/Mas	Briefing/Walk/Run 5 Dogs: 20"(4), 24"(1)
RING 2 10:00 AM	Trial 1 JWW Open	Briefing/Walk/Run 2 Dogs: 20"(1), 24"(1)
RING 1 10:25 AM	Trial 1 Standard Open	Briefing/Walk/Run 3 Dogs: 20"(2), 24"(1)
RING 2 10:50 AM	Trial 1 JWW Novice	Briefing/Walk/Run 4 Dogs: 20"(2), 24"(2)
RING 1 11:15 AM	Trial 1 Standard Novice	Briefing/Walk/Run 4 Dogs: 20"(2), 24"(2)
RING 1 12:05 PM	Trial 2 FAST All Levels	Briefing/Walk/Run 10 Dogs: 20"(8), 24"(2)
RING 2 12:35 PM	Trial 2 JWW Exc/Mas	Briefing/Walk/Run 5 Dogs: 20"(4), 24"(1)
RING 1 12:55 PM	Trial 2 Standard Exc/Mas	Briefing/Walk/Run 5 Dogs: 20"(4), 24"(1)
RING 2 1:25 PM	Trial 2 JWW Open	Briefing/Walk/Run 2 Dogs: 20"(1), 24"(1)
RING 1 1:50 PM	Trial 2 Standard Open	Briefing/Walk/Run 3 Dogs: 20"(2), 24"(1)
RING 2 2:15 PM	Trial 2 JWW Novice	Briefing/Walk/Run 4 Dogs: 20"(2), 24"(2)
RING 1 2:40 PM	Trial 2 Standard Novice	Briefing/Walk/Run 4 Dogs: 20"(2), 24"(2)



HOTEL/RV PARK INFORMATION

Please inform management of your dogs when you book reservations and when you register. Hotel dog regulations and fees may change without notice. The club cannot be responsible for any changes.

The following information is provided as a courtesy to our exhibitors. PLEASE KEEP DOGS QUIET AND PICK UP AFTER YOUR DOGS.

HOST HOTEL:

Embassy Suites Hotel & Conference Center

2501 Conference Drive

Norman, Oklahoma 73069 Phone (866-577-1273)

Embassy Suites Room Type:

- Queen/Queen Suite (2 beds one room) Or King Suite
- Both types are 2 Room Suites
- Both types have a pull-out sofa, refrigerator and microwave.
- Features:
- Complimentary Breakfast Buffet or cook to order.
- 2 hours of Complimentary Cocktails/Snacks at the Evening Reception
- 5:30 pm – 7:30 pm
- \$129.00 per night
- 75.00 pet fee
- 100.00 deposit
- \$10.00 Daily Parking – Waived

**RV PARKING IS ALLOWED FOR THE DAY AT THE TRIAL SITE.
HOOKUPS ARE NOT AVAILABLE.**

Exhibitors are expected to maintain hotel premises and their dogs in a quiet, clean and well-kept manner and for cleaning up after their dogs immediately on hotel/motel and show grounds. Motels/hotels require that dogs be crated when unattended; no bathing or grooming of dogs in guest rooms. Exhibitors/handlers are responsible for any damages to motels/hotels or the event site and may result in disciplinary action by the Trial Committee. Entries may be refused in the future for previous misuse of the motel facilities.

Complaints lodged against any exhibitor will be under the auspices of our Trial Committee and reported to the AKC. This is an AKC-supported measure.

PLEASE REMEMBER: Hotels do not have to allow us to keep our dogs in the rooms. We are all responsible for insuring future pet acceptance at our favorite hotels. Please clean up after your dogs (inside and outside), keep them quiet so as not to disturb other guests, and generally be considerate of others. We all want to continue to have nice places to stay when we travel with our dogs.

