

JUDGING PROGRAM

Red Dirt Agility Club of Oklahoma



AKC All-Breed Agility Trial
Open to All AKC-Recognized Breeds and All-American Dogs / Mixed Breed
Dogs Listed in the AKC Canine Partners Program

Friday - Monday (Memorial Day Weekend)
May 24, 25, 26, 27, 2024

SoccerCity OKC
4520 Old Farm Rd
Oklahoma City, OK 73162

EVENT NUMBERS
2024688404, 2024688405, 2024688406, 2024688407

INDOORS - AIR CONDITIONED ARENA WITH SOCCER TURF SURFACE

EVENT COMMITTEE EMERGENCY CONTACT – LEIGH RAE KEATHLEY – 918-527-6221 (Cell)



CHECK-IN & MEASUREMENTS

All agility dogs are required to have an Official Jump Height Card and must be able to present it if asked.

Don't forget to bring your height card in case someone asks for it.

There will not be a VMO (Measuring Official) at the trial unless an AKC Rep comes (not expected). ALL dogs (except dogs jumping 24") without a valid Jump Height Card or Yellow "Temporary Measurement" Form (for dogs under 2 years old) must be measured by one of the judges before their first run of the weekend to make sure you are entered in the correct jump height. The judges can measure in between classes all day. Be sure to allow enough time prior to your first run to get a measurement..

ARMBAND STICKERS NOT REQUIRED

No paper check-in will be required. We will be using the Agility Gate App for check-in on your phone.... See Page 2 for more information.

CONCESSIONS

Concessions will be available. Both fast food and restaurants are located within easy driving distance.

No other food or drink is allowed at the show site. Your cooperation is greatly appreciated. The use of small coolers is permitted for dog treats and dog food ONLY.

~~~~~  
**DOGS MAY NOT BE LEFT IN THE BUILDING OVERNIGHT.**



### MOVE-UPS

Be sure to let the trial secretary know if you've earned a new title since you entered the trial so your dog can be moved up! Pre-trial move-ups must be submitted to the

trial secretary via email **no later than Monday, May 20, 2024 at 6:00 pm.** **Day-to-Day Move-Ups are permitted** if you fill out a move-up form (available at the ribbon label table) and give it to the trial secretary at any time, but no later than 20 minutes after the last dog crosses the finish line on Fri for a Sat move-up, on Sat. for a Sun. move-up or on Sun. for a Mon. move-up.

### ARRIVAL & SETUP-IMPORTANT!

The building will be open for crating at **11:00 am on Friday, May 24.** **Please do not come any earlier than 11:00 am on Friday.** **Any crates that are set up prior to that time will be removed.** The building will also be open no later than 7:00 a.m. on Saturday, Sunday, and Monday of the trial.

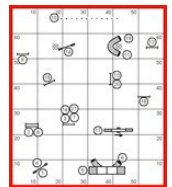
**Field 4 at the back of the facility will be used for additional crating. Mats and/or tarps will be required in that area.**

**CRATING SPACE WILL BE TIGHT. PLEASE BE COURTEOUS OF OTHER EXHIBITORS AND CONSERVE SPACE AS MUCH AS POSSIBLE. PLEASE NO LARGE LOUNGE CHAIRS. X-PENS ARE ALLOWED FOR 3 OR MORE DOGS ONLY. THE TRIAL COMMITTEE HAS THE RIGHT TO ASK YOU TO COMPACT YOUR CRATING SPACE. THANK YOU IN ADVANCE!**

### Running Order & Course Maps

#### IMPORTANT!

**Course maps will be posted per AKC Agility Regulations. There will be no printed copies of course maps for exhibitors.**



Exhibitors may take a picture of the posted course maps. **Also, maps will be posted to the Agility Gate App.**

A preliminary running order will be posted on the [www.ntxagility.com](http://www.ntxagility.com) website on or before Wednesday prior to the first day of the trial. **Please check in using Agility Gate – even from home. If you will be absent, please mark "scratch" for your dog on agility gate.**

### WANT TO HELP???

**We appreciate everyone who helps!** Any and all assistance makes for a smoother running trial, so please check often during the trial to see how you can help!

Volunteer duties will not interfere with running your dog because you sign up for your own volunteer spots!

Volunteers receive snacks and a \$4.00 coupon that can be used for \$4.00 off lunch OR \$4.00 off a future Red Dirt event.

Even if you don't sign up on the volunteer form, your services could be needed. Please ask during the trial!  
**THANK YOU!**

**MAKE IT EASY! Go to this Google Doc and fill in your name where you can help.**

<http://tinyurl.com/jeapjrh>

**We will be utilizing the AGILITY GATE APP for the exhibitors' convenience.**

Agility Gate is a free-to-download app that allows competitors to check-in their dogs via their mobile phone or tablet at an agility show and keep track of the current state of the run orders. It helps prevent crowding around the gate and allows competitors to keep tabs on things while crating away from the ring.

**The access code is 1010**

Course maps will be posted on the Agility Gate App each morning of the trial.

In the meantime, go here...

[http://dogagility.info/agility\\_gate/](http://dogagility.info/agility_gate/)

to read all about it, what it does, how to download it to your phone or tablet and how to use it.

**BE SURE TO CHECK IN EACH MORNING FOR ALL YOUR CLASSES!  
IF YOU NEED TO BE MARKED ABSENT, YOU CAN DO THAT TOO - FROM HOME!!**

**WAIT LIST...**

We have a very short wait list for SATURDAY ONLY. If you will be absent or would like to pull a run or two on Saturday Only to let someone in, we could use a FEW runs. Please let us know ASAP, but definitely before next Sunday, May 19 at 6:00 pm. You will receive a full refund for any runs you pull. We can only replace you until the wait list runs out. **THANK YOU!**

\* \* \* \* \*

**VENDORS....We are looking forward to having....**

- A Portrait Photographer
- A Dog Supply and Clothing Vendor
- A Massage Therapist and A Chiropractor

\* \* \* \* \*

**REMEMBER:** Hotels do not have to let us have dogs in our rooms. We don't want them to start banning dogs. So PLEASE take care to not have your dog be considered a nuisance. Don't be the reason we can't travel with our dogs.



Exhibitors are expected to maintain hotel premises and their dogs in a quiet, clean and well-kept manner and for cleaning up after their dogs immediately on hotel/motel and show grounds. Motels/hotels require that dogs be crated when unattended; no bathing or grooming of dogs in guest rooms. Exhibitors/handlers are responsible for any damages to motels/hotels or the event site and may result in disciplinary action by the Trial Committee. Entries may be refused in the future for previous misuse of the motel facilities.

Complaints lodged against any exhibitor will be under the auspices of our Trial Committee and reported to the AKC. This is an AKC-supported measure.

## THE TRIAL SITE

As anyone who has trialed at Soccer City OKC knows, this is a fabulous facility and the management is happy to have us back because we are all courteous with parking and picking up after our dogs. Please help us keep this venue for agility trials by following a few simple rules!

**Parking** — Parking is limited at this trial site. **We ask that you do not bring RVs to the trial site or any vehicle that takes up more than one parking spot.** Reservations for parking for a **limited number of CLASS C OR SMALLER** RV's is available. To be able to park your RV at Soccer City during the trial (**day only**), see the RV information on the Hotel Page of this Judging Program. Overnight parking will not be permitted. A list of RV parks has been provided at the end of this Judging Program. Please tow a car or hitch a ride with a friend. **This is very important. PLEASE SEE THE RV INFORMATION PAGE AT THE END OF THIS JUDGING PROGRAM.**

- \* **Crating will be tight, so please be courteous and please maintain 6-feet between crating areas, except for families and people traveling together. Field 4 at the back of the facility will be used for additional crating. Mats and/or tarps will be required in that area.** Mats and large lounge-type chairs cannot be used in the main area. Xpens are allowed for 3 or more dogs only. The trial committee might ask you to condense your space if necessary. Please be courteous regarding this.... Everyone needs crating space.
- \* No dogs on the balcony.
- \* No food or open containers on the turf.
- \* Keep treats in a container on the turf.
- \* No grooming inside the building.
- \* **No parking on the street in the subdivision (they'll have you towed!!)**
- \* Be respectful of the neighborhood surrounding the venue.
- \* Keep your dogs on leash and as always ensure that you **clean up after them.**
- \* There are walking trails nearby so please minimize exercising dogs in the subdivision.
- \* **PLEASE KEEP ALL OUTSIDE DOORS CLOSED.** If you come in or go out, please be sure to close the door behind you! This has been a problem in the past and we need to be sure to keep it from happening. We need the cold air to stay inside, please!

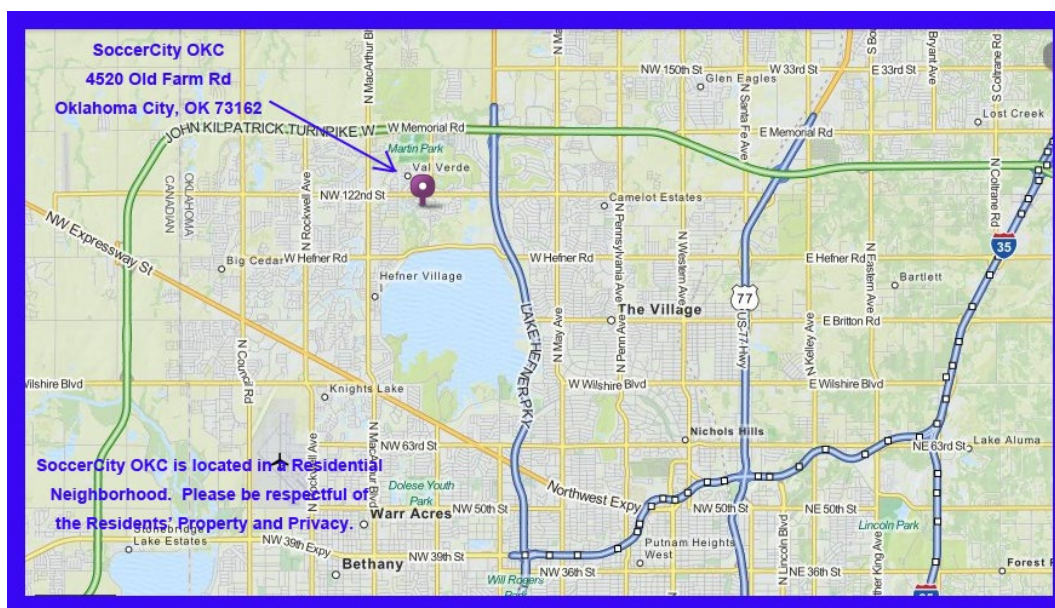
**THIS TRIAL SITE IS IN A RESIDENTIAL AREA...**

**PLEASE RESPECT THE RESIDENTS' PROPERTY AND PRIVACY.**

**PLEASE DO NOT PARK ON THE STREET – YOU WILL BE TOWED.**

This venue is in the middle of the Summerfield subdivision. Your GPS should be able to find the address correctly.

From OK-74 (Lake Hefner Parkway), take the Hefner Road exit and turn West towards the lake. Go about 2 miles, and turn right at Meridian Ave (at the stoplight). Go about .5 miles to Old Farm Rd. Turn left onto Old Farm Rd. Soccer City will be immediately on your left at 4520 Old Farm Road.





# Red Dirt Agility Club of Oklahoma

## JUDGING SCHEDULE

Please notify the Gate Stewards of any running conflicts. Conflicts will be handled on a case-by-case basis when/if they occur. Class counts are contingent on move-ups not yet received and wait-list changes that have not yet been made. Rings will run concurrently.

ALL TIMES (except for the starting times each day) ARE ESTIMATES.

TIMES ARE LISTED AS A COURTESY ONLY TO GIVE COMPETITORS AN IDEA OF WHEN THE CLASS WALK-THRU COULD BEGIN.

Exhibitors are responsible for being at the ring when their turn is called.

Neither the Club nor the Judges will be responsible for the start times. Please plan your arrival accordingly.

**PLEASE PAY ATTENTION TO THE JUMP HEIGHT ORDER IN EX/MAS CLASSES EACH DAY AS THEY MAY CHANGE FROM DAY-TO-DAY TO AVOID CONFLICTS DUE TO NUMBER OF ENTRIES.**

### Friday, May 24, 2024 (364 Total Runs) **SMALL-TO-TALL**

| Ring 1 – Karen Winter, Judge |                                                                                                                  | Ring 2 – Candy Nettles, Judge |                                                                                                                     |
|------------------------------|------------------------------------------------------------------------------------------------------------------|-------------------------------|---------------------------------------------------------------------------------------------------------------------|
| APPROX. WALK TIME            | Briefing and SPLIT Walk-Thru starts at 12:40 pm<br>WALK #1 - 16"; Walk #2 – 20"-24"<br>JUDGING STARTS at 1:00 pm | APPROX. WALK TIME             | Briefing and one Walk-Thru starts at 12:45 pm<br>COURSE OPEN FOR WALKING UNTIL 1:10 PM<br>JUDGING STARTS at 1:20 pm |
| <b>RUN:<br/>1:00 PM</b>      | RUN – T2B – 68 dogs: 16"(25), 20"(29), 24"(14)<br>Course Change                                                  | <b>RUN:<br/>1:20 PM</b>       | WALK/RUN – T2B – 46 dogs: 4"(2), 8"(22), 12"(22)<br>Course Change                                                   |
| 2:25 PM                      | BRIEFING/WALK/RUN – Exc/Mas STD 54 dogs: 4"(4), 8"(25), 12"(25)                                                  | 2:25 PM                       | BRIEFING/WALK/RUN – Exc/Mas JWW – 29 dogs: 16"                                                                      |
| 3:55 PM                      | WALK/RUN - Exc/Mas STD 30 dogs: 16"                                                                              | 3:15 PM                       | WALK/RUN – Exc/Mas JWW – 40 dogs: 20"(25), 24"(15)                                                                  |
| 4:50 PM                      | WALK/RUN Exc/Mas STD – 39 dogs: 20"(25), 24"(14)                                                                 | 4:10 pm                       | WALK/WALK/RUN – Exc/Mas JWW – 58 dogs: 4"(4), 8"(24), 12"(30)<br>Walk #1: 4"-8"; Walk #2: 12"                       |

A LUNCH BREAK CAN BE TAKEN AT JUDGES' DISCRETION; WALK THRUS CAN BE SPLIT AT JUDGE'S DISCRETION

### Saturday, May 25, 2024 (700 Total Runs) **TALL-TO-SMALL**

| Ring 1 – Candy Nettles, Judge |                                                                                                                 | Ring 2 – Karen Winter, Judge |                                                                                                                       |
|-------------------------------|-----------------------------------------------------------------------------------------------------------------|------------------------------|-----------------------------------------------------------------------------------------------------------------------|
| APPROX. WALK TIME             | Briefing and SPLIT Walk-Thru starts at 7:40 am<br>Walk #1 - 20"-24"; WALK #2 – 16"<br>JUDGING STARTS at 8:00 am | APPROX. WALK TIME            | Briefing and 1 Walk-Thru starts at 7:40 am;<br>COURSE OPEN FOR WALKING UNTIL 8:10 AM<br>JUDGING STARTS at 8:15 am     |
| <b>RUN:<br/>8:00 AM</b>       | WALK/RUN -- T2B – 61 Dogs: 24"(11), 20"(27), 16"(23)                                                            | <b>RUN:<br/>8:25 AM</b>      | RUN ALL LEVELS FAST** – 40 dogs: 12"(20), 8"(17), 4"(3)                                                               |
| 9:05 AM                       | WALK/RUN -- T2B – 35 Dogs: 12"(15), 8"(19), 4"(1)<br>Course Change                                              | 9:05 AM                      | WALK/WALK/RUN ALL LEVELS FAST** – 74 dogs: 24"(10), 20"(28), 16"(36)<br>WALK #1-20"-24"; Walk #2-16"<br>Course Change |
| 10:10 AM                      | BRIEFING/WALK/RUN Premier STD – 42 dogs: 24"(4), 20"(9), 16"(13), 12"(7), 8"(8), 4"(1)<br>Course Change         | 10:55 AM                     | BRIEFING/WALK/RUN Novice JWW – 25 dogs: 24"(6), 20"(3), 16"(6), 12"(6), 8"(3), 4"(1)<br>Course Change                 |
| 11:30 AM                      | BRIEFING/WALK/RUN Exc/Mas STD – 43 dogs: 24"(13), 20"(30)                                                       | 11:55 AM                     | BRIEFING/WALK/RUN Open JWW – 26 dogs: 20"(9), 16"(6), 12"(6), 8"(5)<br>Course Change                                  |
| 12:45 PM                      | WALK/WALK/RUN Exc/Mas STD – 64 dogs: 12"(29), 8"(29), 4"(6)<br>Walk #1 12"; Walk #2 8", 4"                      | 12:55 PM                     | BRIEFING/WALK/RUN Exc/Mas JWW – 39 dogs: 16"                                                                          |
| 2:35 PM                       | WALK/RUN Exc/Mas STD – 41 dogs: 16"<br>Course Change                                                            | 1:50 PM                      | WALK/RUN Exc/Mas JWW – 46 dogs: 24"(14), 20"(32)                                                                      |
| 4:00 PM                       | BRIEFING/WALK/RUN Open STD – 27 dogs: 24"(1), 20"(10), 16"(4), 12"(6), 8"(6)<br>Course Change                   | 2:55 PM                      | WALK/WALK/RUN Exc/Mas JWW – 72 dogs: 12"(35), 8"(31), 4"(6)<br>Walk #1 12"; Walk #2 8", 4"<br>Course Change           |
| 5:15 PM                       | BRIEFING/WALK/RUN Novice STD – 24 dogs: 24"(4), 20"(3), 16"(5), 12"(8), 8"(3), 4"(1)                            | 4:35 PM                      | BRIEFING/WALK/RUN Premier JWW – 41 dogs: 24"(5), 20"(6), 16"(13), 12"(8), 8"(9)                                       |

**GO TO [WWW.NTXAGILITY.COM](http://WWW.NTXAGILITY.COM) FOR COMPLETE RESULTS EACH EVENING**

\*\*All Levels of FAST (Novice, Open, Exc, Master) will walk & run together.

**Sunday, May 26, 2024 (694 Total Runs) SMALL-TO-TALL**

| Ring 1 – Karen Winter, Judge |                                                                                                                 | Ring 2 – Candy Nettles, Judge |                                                                                                                             |
|------------------------------|-----------------------------------------------------------------------------------------------------------------|-------------------------------|-----------------------------------------------------------------------------------------------------------------------------|
| APPROX. WALK TIME            | Briefing and SPLIT Walk-Thru starts at 7:40 pm<br>WALK #1 - 16"; Walk #2 – 20"-24"<br>JUDGING STARTS at 8:00 am | APPROX. WALK TIME             | Briefing and 1 Walk-Thru starts at 7:40 am;<br>COURSE OPEN FOR WALKING UNTIL 8:20 AM<br>JUDGING STARTS at 8:25 am           |
| RUN:<br>8:00 AM              | WALK/ RUN – T2B – 64 dogs: 16"(23), 20"(30), 24"(11)                                                            | RUN:<br>8:25 AM               | WALK/RUN ALL LEVELS FAST** – 42 Dogs: 4"(3), 8"(16), 12"(23)                                                                |
| 9:05 AM                      | WALK/RUN – T2B – 37 Dogs: 4"(1), 8"(19), 12"(17)<br>Course Change                                               | 9:05 AM                       | WALK/ WALK/WALK/RUN ALL LEVELS FAST** – 68 dogs:<br>16"(30), 20"(26), 24"(12) Walk #1 16"; Walk #2 20"-24" Course<br>Change |
| 10:15 AM                     | BRIEFING/WALK/RUN – Premier STD – 41 dogs: 8"(8), 12"(6),<br>16"(15), 20"(7), 24"(5) Course Change              | 10:50 AM                      | BRIEFING/WALK/RUN Novice JWW – 29 dogs: 4"(1), 8"(4), 12"(6),<br>16"(7), 20"(4), 24"(7) Course Change                       |
| 11:35 AM                     | BRIEFING/ WALK/WALK/RUN – Exc/Mas STD 61 dogs:<br>4"(5), 8"(28), 12"(28) Walk #1 4"-8"; Walk #2 12"             | 11:55 AM                      | BRIEFING/WALK/RUN Open JWW – 23 dogs: 8"(5), 12"(5), 16"(4),<br>20"(9) Course Change                                        |
| 1:20 PM                      | WALK/RUN - Exc/Mas STD 42 dogs: 16"                                                                             | 12:55 PM                      | BRIEFING/WALK/RUN Exc/Mas JWW – 42 dogs: 20"(27), 24"(15)                                                                   |
| 2:30 PM                      | WALK/RUN Exc/Mas STD – 41 dogs: 20"(27), 24"(14)                                                                | 2:00 PM                       | BRIEFING/WALK/WALK/RUN Exc/Mas JWW – 68 dogs: 4"(5),<br>8"(30), 12"(33) Walk #1 4"-8"; Walk #2 12"                          |
| 3:55 PM                      | BRIEFING/WALK/RUN Open STD – 27 dogs: 8"(6), 12"(7),<br>16"(3), 20"(10), 24"(1) Course Change                   | 3:30 PM                       | WALK/RUN Exc/Mas JWW – 42 dogs: 16" Course Change                                                                           |
| 5:10 PM                      | BRIEFING/WALK/RUN Novice STD – 26 dogs: 4"(1), 8"(4),<br>12"(8), 16"(6), 20"(2), 24"(5)                         | 4:45 PM                       | BRIEFING/WALK/RUN Premier JWW – 41 dogs: 4"(2), 8"(9), 12"(6),<br>16"(15), 20"(5), 24"(4)                                   |

**A LUNCH BREAK CAN BE TAKEN AT JUDGES' DISCRETION; WALK THRUS CAN BE SPLIT AT JUDGE'S DISCRETION**

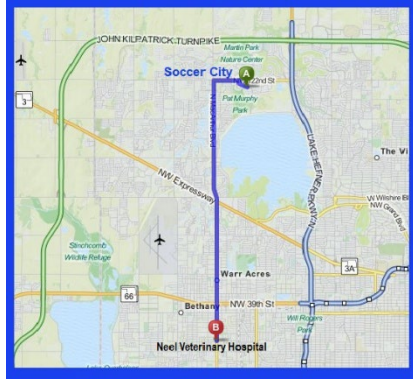
**Monday, May 27, 2024 (461 Total Runs) TALL-TO-SMALL**

| Ring 1 – Candy Nettles, Judge |                                                                                                                | Ring 2 – Karen Winter, Judge |                                                                                                                 |
|-------------------------------|----------------------------------------------------------------------------------------------------------------|------------------------------|-----------------------------------------------------------------------------------------------------------------|
| APPROX. WALK TIME             | Briefing and SPLIT Walk-Thru starts at 7:40 am<br>Walk #1 - 24"-20"WALK #2 – 16"<br>JUDGING STARTS at 8:00 am  | APPROX. WALK TIME            | Briefing and Walk-Thru starts at 7:40 am;<br>COURSE OPEN FOR WALKING UNTIL 8:25 AM<br>JUDGING STARTS at 8:30 am |
| RUN:<br>8:00 AM               | WALK/RUN -- T2B – 59 Dogs: 24"(10),20"(27), 16"(22)<br>Course Change                                           | RUN:<br>8:30 AM              | WALK/RUN -- T2B – 42 Dogs: 12"(21), 8"(19), 4"(2)<br>Course Change                                              |
| 9:15 AM                       | BRIEFING/WALK/RUN Exc/Mas STD – 34 dogs: 24"(11),<br>20"(23)                                                   | 9:30 AM                      | BRIEFING/WALK/RUN Novice JWW – 29 dogs: 24"(7),<br>20"(7),16"(5), 12"(7), 8"(2), 4"(1) Course Change            |
| 10:20 AM                      | WALK/RUN Exc/Mas STD – 31 dogs: 16"                                                                            | 10:35 AM                     | BRIEFING/WALK/RUN Open JWW – 25 dogs: 20"(9),16"(6), 12"(2),<br>8"(8) Course Change                             |
| 11:15 AM                      | WALK/ WALK/WALK/RUN Exc/Mas STD – 60 dogs: 12"(31),<br>8"(25), 4"(4) Walk #1 12"; Walk #2 8", 4" Course Change | 11:35 AM                     | BRIEFING/WALK/RUN Exc/Mas JWW – 33 dogs: 24"(12), 20"(21)                                                       |
| 1:05 PM                       | BRIEFING/WALK/RUN Open STD – 25 dogs: 24"(1),<br>20"(8),16"(5), 12"(3), 8"(8) Course Change                    | 12:30 PM                     | WALK/RUN Exc/Mas JWW – 30 dogs: 16"                                                                             |
| 2:15 PM                       | BRIEFING/WALK/RUN Novice STD – 27 dogs: 24"(5),<br>20"(5),16"(5), 12"(9), 8"(2), 4"(1)                         | 1:15 PM                      | WALK/WALK/WALK/RUN Exc/Mas JWW – 66 dogs: 12"(36),<br>8"(26), 4"(4) Walk #1 12"; Walk #2 8", 4" Course Change   |

**\*\*All Levels of FAST (Novice, Open, Exc, Master) will walk & run together.**

**GO TO [WWW.NTXAGILITY.COM](http://WWW.NTXAGILITY.COM) FOR COMPLETE RESULTS EACH EVENING**

# Veterinarians (On Call)



**Neel Veterinary Hospital**  
 2700 N MacArthur Blvd.  
 Oklahoma City, OK 73127  
 405-947-8387

Veterinarian office is open 24 hours/day, 7 days/week

**TO VETERINARIAN FROM SHOW SITE**

**Approximate Travel Time:  
 16 Minutes**

Turn right out of the Soccer City parking lot and left onto Old Farm Rd toward N Meridian Ave.  
 Go 0.04 miles and turn **left** onto N Meridian Ave.  
 Go 0.17 miles and take the 1<sup>st</sup> **left** onto NW 122nd St.  
 Go 0.85 miles and turn **left** onto N MacArthur Blvd.  
 Go 6.75 miles... 2700 N MacArthur Blvd is on the **left**.

## MOTEL/RV PARK INFORMATION



**NOTE:** The club cannot guarantee that the hotels/motels listed below accept dogs. Please check regarding rates and dog acceptance policy when making reservations. A pet deposit \*may\* be required. Please check with the hotel for policies and restrictions.

**Please inform management of your dogs when you book reservations and when you register. Motel dog regulations and fees may change without notice. The club cannot be responsible for any changes.**

- La Quinta Inn & Suites OKC North Quail Springs** ..... (405) 755.7000  
 3003 W Memorial Rd.  
 Oklahoma City OK 73134
- La Quinta Inn & Suites, NW Expressway** ..... (405) 773-5575  
 4829 Northwest Expressway  
 Oklahoma City, Oklahoma 73132
- Country Inn & Suites** ..... (405) 286-3555  
 13501 Memorial Park Drive  
 Oklahoma City, OK 73120
- Holiday Inn Express & Suites** ..... (888) HOLIDAY  
 13520 NW 135th Street  
 Oklahoma City, OK 73120

**PLEASE REMEMBER:** Hotels do not have to allow us to keep our dogs in the rooms. We are all responsible for insuring future pet acceptance at our favorite hotels. Please clean up after your dogs (inside and outside), keep them quiet so as not to disturb other guests, and generally be considerate of others. We all want to continue to have nice places to stay when we travel with our dogs.

# NOTE: TRIAL SITE PARKING WILL BE TIGHT.



## RV INFORMATION

We will take reservations for parking for a **limited number** of **CLASS C OR SMALLER** RV's. To be able to park your RV at Soccer City during the trial (**day parking only**), please email **Gayle McNish** at [gayleamcnish@gmail.com](mailto:gayleamcnish@gmail.com). If spaces are available, a parking pass will be sent to you to place in your windshield. If you don't get a parking pass, you will be required to move your RV off site. Failure to comply is grounds for a misconduct hearing.

**Overnight RV parking is not available on site.**  
**However, the following RV Parks are nearby...**

- Twin Fountains RV Park** ..... (405) 475-5514  
2727 NE 63rd St  
Oklahoma City, OK
- Council Road RV Park** ..... (405) 789-2103  
8108 South West 8th Street  
Oklahoma City, OK, <http://www.councilrdrvpark.com/>
- Rockwell RV Park** ..... (405) 787-5992  
720 South Rockwell  
Oklahoma City, <http://www.campus.com/ok/rockwell/>
- Mustang Run RV Park** ..... (405) 577-6040  
115218 W. 1-40 Service Road  
Oklahoma City, OK 73099