

# JUDGING PROGRAM

## Red Dirt Agility Club of Oklahoma



### AKC All-Breed Agility Trial

Open to All AKC-Recognized Breeds and All-American Dogs / Mixed Breed  
Dogs Listed in the AKC Canine Partners Program

**Saturday - Monday (Labor Day Weekend)  
August 31, September 1, 2, 2019**

#### EVENT NUMBERS

2019688409, 2019688410, 2019688411

**INDOORS - AIR CONDITIONED ARENA WITH SOCCER TURF SURFACE**

### EVENT COMMITTEE EMERGENCY CONTACTS – CYNDI MIRELES – 502.797.3191 (Cell)

#### CHECK-IN & MEASUREMENTS



All agility dogs are required to have an Official Jump Height Card.

**Our Judge, Don Farage, is a Measuring Official (VMO).**

ALL dogs (regardless of height) without a valid Jump Height Card or Yellow "Temporary Measurement"

Form (for dogs under 2 years old) must be measured before their first run of the weekend. Forms will be available at the ribbon-label table. Please fill out a form before requesting to be measured. If you already have a permanent height card, be sure to have it with you at the trial in case you are asked for it.

**If your dog needs to be measured, it is your responsibility to have it done before you run. Failure to do so will result in removal of any qualifying runs you receive.**

#### ARMAND STICKERS NOT REQUIRED

Traditional check-in is not necessary. Please check in at the gate on the gate sheet prior to your class.

#### CONCESSIONS

Concessions will be available. Both fast food and restaurants are located within easy driving distance.

**No other food or drink is allowed at the show site.** Your cooperation is greatly appreciated. **Use of Coolers:** The use of small coolers is permitted for **dog treats and dog food ONLY.**

#### MOVE-UPS



Be sure to let the trial secretary know if you've earned a new title since you entered the trial so your dog can be moved up! Pre-trial move-ups must be submitted to the trial secretary via email **no later than Monday, August 26, 2019 at 6:00 pm.** **Day-to-Day Move-Ups are permitted** if you fill out a move-up form (available at the ribbon label table) and give it to the trial secretary at any time, but no later than 20 minutes after the last dog crosses the finish line on Sat. for a Sun. move-up or on Sun. for a Mon. move-up.

#### ARRIVAL & SETUP-IMPORTANT!

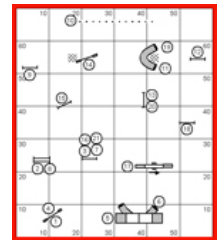
The building will be open for crating from 3:30 to 8:00 p.m. on Friday, August 30. The building will also be open for crating at 6:30 a.m. on Saturday, Sunday, and Monday of the trial. **Please do not come any earlier than 3:30 p.m. on Friday, August 30 - any crates that are set up prior to that time will be removed.**

**CRATING SPACE WILL BE TIGHT. PLEASE BE COURTEOUS OF OTHER EXHIBITORS AND CONSERVE SPACE AS MUCH AS POSSIBLE. PLEASE NO MATS OR LARGE LOUNGE CHAIRS. X-PENS ARE ALLOWED FOR 3 OR MORE DOGS ONLY. THE TRIAL COMMITTEE HAS THE RIGHT TO ASK YOU TO COMPACT YOUR CRATING SPACE. THANK YOU IN ADVANCE!**

**DOGS MAY NOT BE LEFT  
IN THE BUILDING  
OVERNIGHT.**

#### Running Order & Course Maps

The judges will supply course maps. Please take **ONE** copy of the map for the courses you are running so we will have sufficient copies for every exhibitor. Course



maps and running orders will be posted in a prominent area. Running orders will also be posted at the gate for your convenience in determining where you are located in the running order.

#### WANT TO HELP???

**We appreciate everyone who helps!** Any and all assistance makes for a smoother running trial, so please check often during the trial to see how you can help!

Volunteer duties will not interfere with running your dog because you sign up for your own volunteer spots!

Volunteers receive snacks and a \$4.00 coupon that can be used for \$4.00 off lunch OR \$4.00 off a future Red Dirt event.

**Even if you don't sign up on the volunteer form, your services could be needed. Please ask during the trial! THANK YOU!**

**MAKE IT EASY! Go to this Google Doc and fill in your name where you can help.**

<http://tinyurl.com/jeapirh>

RED DIRT AGILITY CLUB...

FIND US ON  
FACEBOOK



<http://tinyurl.com/qgdwc5q>

## IMPORTANT NOTICE...WE HAVE A WAIT LIST...

...on **Sunday**. We would love to get everyone in if possible! We hope everyone can make it, but if you find out you have to miss, please let us know **NO LATER THAN NEXT SUNDAY, AUGUST 25 AT 6:00 PM**. If we can replace you with someone on the wait list, we can refund your entry fees for the Saturday and/or Sunday runs you give up. We can replace people as long as the wait list lasts. Someone waiting in the wings will really appreciate it! **THANK YOU!** (We don't have a wait list on Saturday or Monday, so no refunds can be given for Saturday or Monday runs.)

## SANCTIONED B MATCH

FRIDAY (August 30) EVENING... 5:00 PM – 7:30 PM

OPEN TO EVERYONE!

Day-of Entries Only

Building opens for setup at 3:30 pm

Sign-up: 4:00 pm until 7:00 pm

or until 200 runs are reached

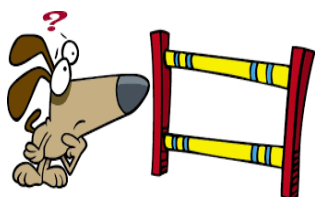
Match runs from 5:00 pm until 7:30 pm

TWO RINGS – STD & JWW

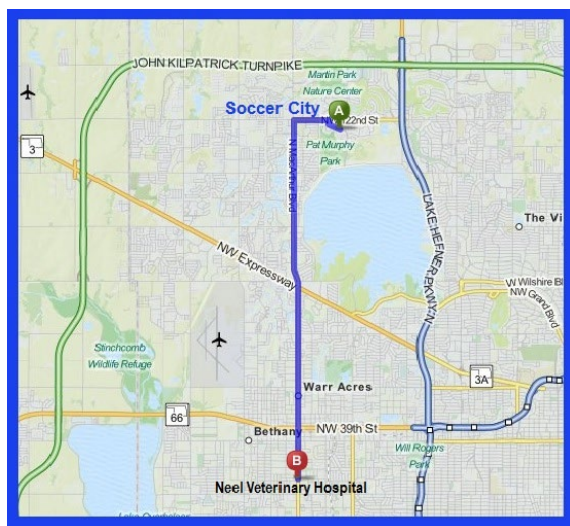
90 seconds in the ring with toy, no treats in the ring

\$10 first run

\$5 for additional runs (same dog)



## Veterinarians (On Call)



### Neel Veterinary Hospital

2700 N MacArthur Blvd.

Oklahoma City, OK 73127

405-947-8387

Veterinarian office is open 24 hours/day, 7 days/week

### TO VETERINARIAN FROM SHOW SITE

Approximate Travel Time:  
**16 Minutes**

Turn right out of the Soccer City parking lot onto Old Farm Rd toward N Meridian Ave.

Go 0.04 miles and turn **left** onto N Meridian Ave.

Go 0.17 miles and take the 1<sup>st</sup> **left** onto NW 122nd St.

Go 0.85 miles and turn **left** onto N Macarthur Blvd.

Go 6.75 miles... 2700 N MacArthur Blvd is on the **left**.

## THE TRIAL SITE

We are so excited to be able to host another agility trial at SoccerCity OKC indoor soccer arena. It is a fabulous facility and the management is happy to have us back because we are all courteous with parking and picking up after our dogs. Please help us keep this venue for agility trials by following a few simple rules!

**Parking** -- Because of the interest in this trial, we increased the maximum number of runs per day. That means that we will likely have more handlers and more cars to accommodate in the parking lot! For that reason, ***we ask that you do not bring RVs to the trial site or any vehicle that takes up more than one parking spot.*** Overnight parking will not be permitted. A list of RV parks has been provided at the end of this Judging Program. Please tow a car or hitch a ride with a friend. **This is very important.**

- \* **Crating will be tight, so please don't spread out.** Mats and large lounge-type chairs cannot be used. Xpens are allowed for 3 or more dogs only. The trial committee might ask you to condense your space if necessary. Please be courteous regarding this.... Everyone needs crating space.
- \* No dogs on the balcony.
- \* No food or open containers on the turf.
- \* Keep treats in a container on the turf.
- \* No grooming inside the building.
- \* **No parking on the street in the subdivision (they'll have you towed!!)**
- \* Be respectful of the neighborhood surrounding the venue.
- \* Keep your dogs on leash and as always ensure that you clean up after them.
- \* There are walking trails nearby so please minimize exercising dogs in the subdivision.
- \* **PLEASE KEEP ALL OUTSIDE DOORS CLOSED.** If you come in or go out, please be sure to close the door behind you! This has been a problem in the past and we need to be sure to keep it from happening. We need the cold air to stay inside, please!

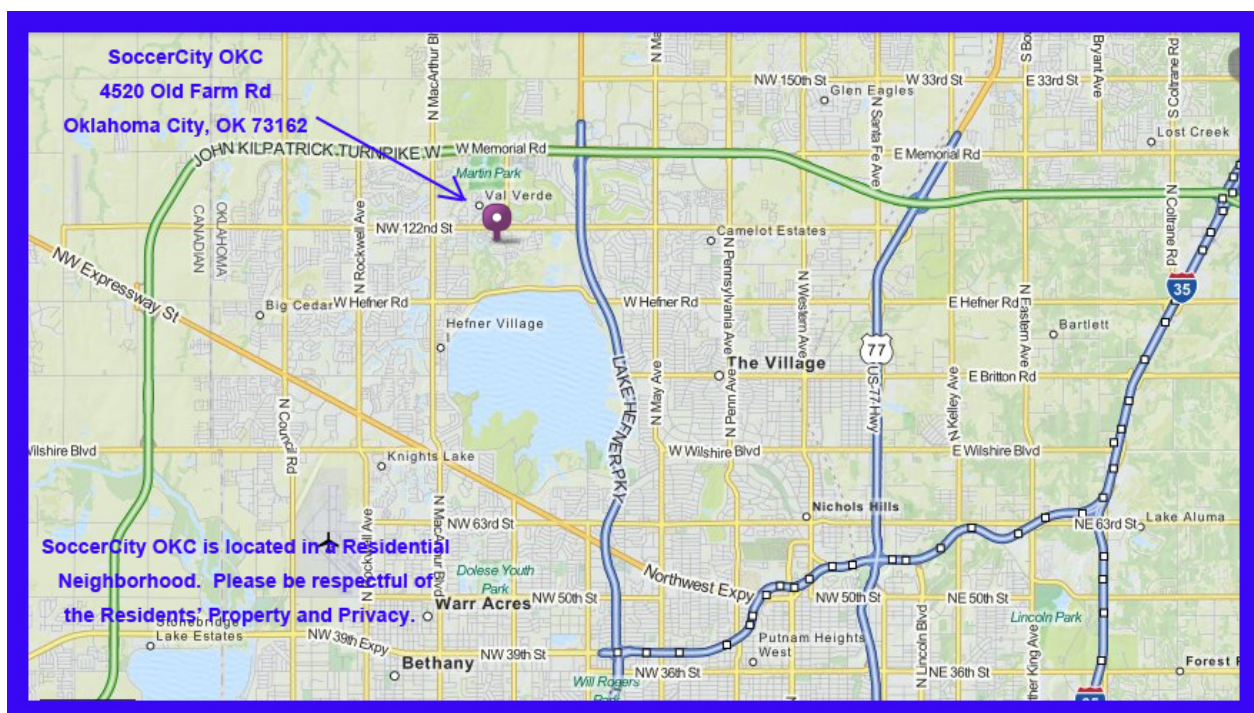
**THIS TRIAL SITE IS IN A RESIDENTIAL AREA...**

**PLEASE RESPECT THE RESIDENTS' PROPERTY AND PRIVACY.**

**PLEASE DO NOT PARK ON THE STREET – YOU WILL BE TOWED.**

This venue is in the middle of the Summerfield subdivision. Your GPS should be able to find the address correctly.

From OK-74 (Lake Hefner Parkway), take the Hefner Road exit and turn West towards the lake. Go about 2 miles, and turn right at Meridian Ave (at the stoplight). Go about .5 miles to Old Farm Rd. Turn left onto Old Farm Rd. Soccer City will be immediately on your left at 4520 Old Farm Road.







## Red Dirt Agility Club of Oklahoma JUDGING SCHEDULE

Please notify the Gate Stewards of any running conflicts. Conflicts will be handled on a case-by-case basis when/if they occur. Class counts are contingent on move-ups not yet received and wait-list changes that have not yet been made. **Rings will run concurrently.**

**ALL TIMES (except for the starting times each day) ARE ESTIMATES.**

TIMES ARE LISTED AS A COURTESY ONLY TO GIVE COMPETITORS AN IDEA OF WHEN THE CLASS WALK-THRU COULD BEGIN.

Exhibitors are responsible for being at the ring when their turn is called.

Neither the Club nor the Judges will be responsible for the start times. Please plan your arrival accordingly.

### Running Order, Saturday, August 31, 2019 (625 Total Runs)

Ring 1 – Dr. Roger O'Sullivan, Judge		Ring 2 – Mr Don Farage Jr., Judge	
APPROX. WALK TIME	Briefing and Walk-Thru at 7:40 am; <b>JUDGING STARTS @ 8:00 am</b>	APPROX. WALK TIME	Briefing and Walk-Thru start at 7:40 am; <b>JUDGING STARTS at 8:15 am</b>
<b>Run: 8:00 AM</b>	T2B Run 41 dogs: 4"(1), 8"(5), 12"(17), 16"(18)	<b>Run: 8:15 AM</b>	Exc/Mas FAST-Run 27 dogs: 20"(27), 24"(0) This ring will be open for walking after 7:40 am Briefing
8:40 AM	T2B Walk/Run 34 dogs: 20"(32), 24"(2) <b>Course Change</b>	8:40 AM	Exc/Mas FAST-Walk/Run 23 dogs: 8"(3), 12"(8), 16"(12) <b>NO Course Change</b>
9:45 AM	Premier STD Briefing/Walk/Run 44 dogs: 4"(1), 8"(4), 12"(5), 16"(6), 20"(25), 24"(3) <b>Course Change</b>	9:20 AM	Open & Novice FAST Briefing/Walk and Run Together; 24 dogs: 8"(3), 12"(5), 16"(3), 20"(11), 24"(2) <b>Course Change</b>
11:00 AM	Exc/Mas Standard- Briefing/Walk/Run 47 dogs: 4"(5), 8"(15), 12"(27)	10:15 AM	Novice JWW – Briefing/Walk/Run 17 dogs: 8"(2), 12"(4), 16"(2), 20"(7), 24"(1), 24C(1) <b>Course Change</b>
12:15 PM	Exc/Mas Standard- Walk/Run 62 dogs: 20"	11:05 AM	Open JWW – Briefing/Walk/Run 27 dogs: 8"(3), 12"(8), 16"(5), 20"(9), 24"(2) <b>Course Change</b>
1:45 PM	Exc/Mas Standard- Walk/Run 41 dogs: 16"(32), 24"(9) <b>Course Change</b>	12:05 PM	Exc/Mas JWW –Briefing/Walk/Run 43 dogs: 16"(34), 24"(9)
3:05 PM	Open Standard – Briefing/Walk/Run 22 dogs: 8"(3), 12"(8), 16"(6), 20"(5), 24"(0) <b>Course Change</b>	1:05 PM	Exc/Mas JWW - Walk/Run 52 dogs: 4"(5), 8"(19), 12"(28)
4:05 PM	Novice Standard-Briefing/Walk/Run 19 dogs: 8"(4), 12"(2), 16"(1), 20"(7), 24"(4), 24C(1)	2:10 PM	Exc/Mas JWW- Walk/Run 61 dogs: 20" <b>Course Change</b>
<b>A LUNCH BREAK CAN BE TAKEN AT JUDGES' DISCRETION; WALK THRUS CAN BE SPLIT AT JUDGE'S DISCRETION</b>		3:40 PM	Premier JWW – Briefing/Walk/Run 41 dogs: 4(1), 8(3), 12(8), 16(8), 20(18), 24(3)

### Running Order, Sunday, September 1, 2019 (625 Total Runs)

Ring 1 – Mr Don Farage Jr., Judge		Ring 2 – Dr. Roger O'Sullivan, Judge	
APPROX. WALK TIME	Briefing and Walk-Thru at 7:40 am; <b>JUDGING STARTS @ 8:00 am</b>	APPROX. WALK TIME	Briefing and Walk-Thru start at 7:40 am; <b>JUDGING STARTS at 8:00 am</b>
<b>Run: 8:00 AM</b>	T2B Run 35 dogs: 8"(6), 12"(16), 16"(13)	<b>Run: 8:00 AM</b>	Exc/Mas FAST-Run 30 dogs: 20"(29), 24"(1)
8:35 AM	T2B Walk/Run 34 dogs: 20"(32), 24"(2) <b>Course Change</b>	8:35 AM	Exc/Mas FAST-Walk/Run 24 dogs: 8"(4), 12"(9), 16"(11) <b>NO Course Change</b>
9:40 AM	Premier STD Briefing/Walk/Run 41 dogs: 4"(1), 8"(4), 12"(6), 16"(7), 20"(20), 24"(3) <b>Course Change</b>	9:15 AM	Open & Novice FAST Briefing/Walk and Run Together; Run 22 dogs: 8"(2), 12"(7), 16"(3), 20"(8), 24"(2) <b>Course Change</b>
10:50 AM	Exc/Mas Standard- Briefing/ Walk/Run 52 dogs: 4"(5), 8"(18), 12"(29)	10:10 AM	Novice JWW - Briefing/Walk/Run 18 dogs: 8"(3), 12"(4), 16"(2), 20"(7), 24"(1), 24C(1) <b>Course Change</b>
12:10 PM	Exc/Mas Standard- Walk/Run 62 dogs: 20"	11:00 AM	Open JWW – Briefing/Walk/Run 27 dogs: 8"(3), 12"(8), 16"(6), 20"(8), 24"(2) <b>Course Change</b>
1:40 PM	Exc/Mas Standard- Walk/Run 37 dogs: 16"(29), 24"(8) <b>Course Change</b>	12:00 PM	Exc/Mas JWW –Briefing/Walk/Run 39 dogs: 16"(31), 24"(8)
2:55 PM	Open Standard – Briefing/Walk/Run 23 dogs: 8"(3), 12"(8), 16"(7), 20"(5), 24"(0) <b>Course Change</b>	12:55 PM	Exc/Mas JWW - Walk/Run 57 dogs: 4"(5), 8"(22), 12"(30)
3:55 PM	Novice Standard-Briefing/Walk/Run 19 dogs: 8"(5), 12"(2), 16"(1), 20"(6), 24"(4), 24C(1)	2:05 PM	Exc/Mas JWW- Walk/Run 60 dogs: 20" <b>Course Change</b>
<b>GO TO <a href="http://WWW.NTXAGILITY.COM">WWW.NTXAGILITY.COM</a> FOR COMPLETE RESULTS</b>		3:35 PM	Premier JWW – Briefing/Walk/Run 45 dogs: 4"(1), 8"(5), 12"(9), 16"(8), 20"(20), 24"(2)

**A LUNCH BREAK CAN BE TAKEN AT JUDGES' DISCRETION; WALK THRUS CAN BE SPLIT AT JUDGE'S DISCRETION**

Running Order, Monday, September 2, 2019 (457 Total Runs)			
Ring 1 – Dr. Roger O’Sullivan, Judge		Ring 2 – Mr Don Farage Jr., Judge	
PLEASE NOTE THE CHANGE IN RUNNING ORDER IN EX/MAS JWW RING FROM THE PREVIOUS DAYS			
APPROX. WALK TIME	Briefing and Walk-Thru at 7:40 am; <u>JUDGING STARTS</u> at 8:00 am	APPROX. WALK TIME	Briefing and Walk-Thru at 7:40 am; <u>JUDGING STARTS</u> at 8:00 am
<b>Run: 8:00 AM</b>	T2B Run 38 dogs: 20”(35), 24”(3) <b>Course Change</b>	<b>Run: 8:00 AM</b>	T2B Run 43 dogs: 4”(1), 8”(4), 12”(19), 16”(19) <b>Course Change</b>
8:55 AM	Exc/Mas Standard- Briefing/ Walk/Run 47 dogs: 4”(5), 8”(14), 12”(28)	8:55 AM	Novice JWW - Briefing/Walk/Run 16 dogs: 8”(2), 12”(3), 16”(3), 20”(6), 24”(1), 24C(1) <b>Course Change</b>
10:05 AM	Exc/Mas Standard- Walk/Run 54 dogs: 20”	9:40 AM	Open JWW – Briefing/Walk/Run 27 dogs: 8”(3), 12”(7), 16”(6), 20”(7), 24”(4) <b>Course Change</b>
11:25 AM	Exc/Mas Standard- Walk/Run 43 dogs: 16”(34), 24”(9) <b>Course Change</b>	10:35 AM	Exc/Mas JWW –Briefing/Walk/Run 52 dogs: 4”(5), 8”(18), 12”(29)
12:50 PM	Open Standard – Briefing/Walk/Run 23 dogs: 8”(3), 12”(8), 16”(7), 20”(5), 24”(0) <b>Course Change</b>	11:40 PM	Exc/Mas JWW - Walk/Run 53 dogs: 20”
1:50 PM	Novice Standard-Briefing/Walk/Run 17 dogs: 8”(3), 12”(1), 16”(2), 20”(6), 24”(4), 24C(1)	12:50 PM	Exc/Mas JWW- Walk/Run 44 dogs: 16”(36), 24”(8) <b>Course Change</b>

**GO TO [WWW.NTXAGILITY.COM](http://WWW.NTXAGILITY.COM) FOR COMPLETE RESULTS**

### \*\*\*\*\*WAIT LIST\*\*\*\*\*

We have a wait list for **Sunday**. We would love to get everyone in if possible! We hope everyone can make it, but if you can't, please let us know **NO LATER THAN SUNDAY, AUGUST 25 AT 6:00 PM**. If we can replace your entries with a wait-listed entry, you will receive a full refund for the runs we replace. Please note that we do not have a wait list on Saturday or Monday, so refunds cannot be issued for Saturday or Monday runs.



Exhibitors are expected to maintain hotel premises and their dogs in a quiet, clean and well-kept manner and for cleaning up after their dogs immediately on hotel/motel and show grounds. Motels/hotels require that dogs be crated when unattended; no bathing or grooming of dogs in guest rooms. Exhibitors/handlers are responsible for any damages to motels/hotels or the event site and may result in disciplinary action by the Trial Committee. Entries may be refused in the future for previous misuse of the motel facilities.

Complaints lodged against any exhibitor will be under the auspices of our Trial Committee and reported to the AKC. This is an AKC-supported measure.



## MOTEL/RV PARK INFORMATION

**NOTE:** The club cannot guarantee that the hotels/motels listed below accept dogs. Please check regarding rates and dog acceptance policy when making reservations. A pet deposit \*may\* be required. Please check with the hotel for policies and restrictions.

**Please inform management of your dogs when you book reservations and when you register. Motel dog regulations and fees may change without notice. The club cannot be responsible for any changes.**

**La Quinta Inn & Suites OKC North Quail Springs** ..... (405) 755.7000  
3003 W Memorial Rd.  
Oklahoma City OK 73134

**La Quinta Inn & Suites, NW Expressway** ..... (405) 773-5575  
4829 Northwest Expressway  
Oklahoma City, Oklahoma 73132

**Country Inn & Suites** ..... (405) 286-3555  
13501 Memorial Park Drive  
Oklahoma City, OK 73120

**Holiday Inn Express & Suites** ..... (888) HOLIDAY  
13520 NW 135th Street  
Oklahoma City, OK 73120

**PLEASE REMEMBER:** Hotels do not have to allow us to keep our dogs in the rooms. We are all responsible for insuring future pet acceptance at our favorite hotels. Please clean up after your dogs (inside and outside), keep them quiet so as not to disturb other guests, and generally be considerate of others. We all want to continue to have nice places to stay when we travel with our dogs.

**NOTE: TRIAL SITE PARKING WILL BE TIGHT.**

**PLEASE DO NOT PARK RVs (or any vehicle or trailer that takes up more than ONE space) at the show site.**



**RV parking is not available on site. However, the following RV Parks are nearby...**

**Twin Fountains RV Park** ..... (405) 475-5514  
2727 NE 63rd St  
Oklahoma City, OK

**Council Road RV Park** ..... (405) 789-2103  
8108 South West 8th Street  
Oklahoma City, OK, <http://www.councilrdrvpark.com/>

**Rockwell RV Park** ..... (405) 787-5992  
720 South Rockwell  
Oklahoma City, <http://www.campusa.com/ok/rockwell/>

**Mustang Run RV Park** ..... (405) 577-6040  
115218 W. 1-40 Service Road  
Oklahoma City, OK 73099