

JUDGING PROGRAM

South Plains Obedience Training Club of Lubbock

AKC All-Breed Agility Trial in Lubbock, Texas

Friday, Saturday, Sunday, November 6, 7, 8, 2020

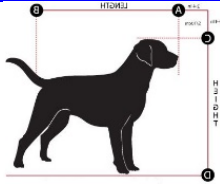
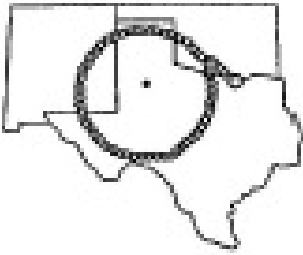
EVENT NUMBERS 2020269112, 2020269113, 2020269114

TEXAS TECH EQUESTRIAN CENTER

5712 CR 1500, Lubbock, TX 79407

To Be Held Indoors on Packed Dirt – Non-Climate-Controlled Facility

EVENT COMMITTEE EMERGENCY CONTACT – TERESA JANSSEN - 806.786.8661



Check-In and Measuring Info...

During the COVID pandemic, AKC is not requiring dogs to be measured prior to running.

Check-In ARMAND STICKERS NOT REQUIRED

Chapter 1, Section 19 of the Regulations for Agility Trials has been amended to eliminate the mandatory use of identifying stickers/armbands worn by agility exhibitors. The Club is not requiring armband stickers.

Gate sheets will be mounted on poster boards for check-in. **PLEASE BRING YOUR OWN PENS AS NO COMMUNITY PENS WILL BE AVAILABLE.**

Concessions Available

Concessions will be available for breakfast (Sat & Sun only) and lunch all 3 days.

Dogs may not be left in the building overnight.

MOVE-UPS



Be sure to let the trial secretary know if you've earned a new title since you entered the trial so your dog can be moved up! Pre-trial move-ups must be submitted to the trial secretary via email **no later than 6:00 PM Monday, November 2.** Day-

to-Day Move-Ups are permitted if you fill out a move-up form (available at the check-in table) and give it to the trial secretary at any time, but no later than 20 minutes after the last dog crosses the finish line on Friday for a Saturday move-up or on Saturday for a Sunday move-up.

Arrival & Setup

Exhibitors are allowed to set up beginning no earlier than 9:00 am on Friday. Set up begins at 7:00 am on Saturday and Sunday.



VETERINARIANS – ON CALL



Live Oak Animal Hospital

5214 98th St, Ste 100

Lubbock, TX 79424
806-794-9000

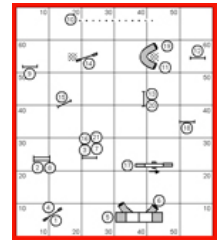
Mon-Fri: 8am-10pm Sat-Sun: 8am-5pm
Maps from the show site to the Emergency Vet Clinic will be at the Exhibitors table.

EMERGENCY/ DISASTER PROCEDURES:

Our emergency coordinator will be on the grounds throughout the show. A list of emergency contacts will be posted and the coordinator will assist you in receiving whatever assistance is needed.

FIRE: 806-765-5757 For Emergency Call 911
POLICE: 806-763-5333 For Emergency Call 911
AMBULANCE SERVICE- EMS- 911

Course maps will be posted on our website
www.ntxagility.com
each evening of the trial for the following day.



Course maps will also be posted in a prominent area so you can take a picture of them with your phone. Gate sheets will be mounted on poster board for check-in. **PLEASE BRING YOUR OWN PEN TO CHECK IN. NO COMMUNITY PENS WILL BE AVAILABLE.**

WANT TO HELP???



We need you!

Please email Volunteer Coordinator Volunteer coordinator:

Dana Brown - ddbrow@sbcglobal.net

if you have questions before the trial. You may also sign-up at the trial. **The trial will run faster if we don't have to yell for volunteers. It takes as many volunteers for a small trial as a big trial.**

Volunteers receive \$3 coupon, good for future SPOTC entries or concession stand.

GO HERE AND SIGN UP WHERE YOU WOULD LIKE TO VOLUNTEER:

<http://tinyurl.com/SPOTC-Volunteers>

THANK YOU!!!!

MAP AND DIRECTIONS TO TRIAL SITE...



FROM WEST LOOP 289: Take 34th Street Exit and go west 2.5 miles to Upland Street. Left on Upland Street. Go south 1 mile on Upland to CR 6900 Right on CR 6900. Go west on CR 6900 1 mile to CR 1500. Left on CR 1500. Go south ½ mile to entrance to Equestrian Center - Proceed to parking lot

FROM HWY 62/82 SOUTHWEST OF LUBBOCK Turn north on to Upland Avenue and travel 1.1 miles to CR 6900. Turn left on CR 6900, and go 1 mile to CR 1500. Turn left on CR1500 and go south ½ mile to entrance to Equestrian Center. Proceed to parking lot.

ABOUT THE SHOW SITE: The Texas Tech Equestrian Center is an Indoor Arena with a Dirt arena surface. It is not climate controlled. Please Park in designated Exhibitor parking areas only. Parking is a short distance from the arena, you may want to bring a cart/dolly.

INDOOR SET UP RESTRICTIONS: No matting allowed on concrete. Matting is allowed on the dirt. No X-Pens allowed in the building. Please cover crates with sheet from home. Please endeavor to keep barking at a minimum. No high-backed chairs (i.e. La Fuma style) lounge chairs allowed at ring side.



Exhibitors are expected to maintain hotel premises and their dogs in a quiet, clean and well-kept manner and for cleaning up after their dogs immediately on hotel/motel and show grounds. Motels/hotels require that dogs be crated when unattended; no bathing or grooming of dogs in guest rooms. Exhibitors/handlers are responsible for any damages to motels/hotels or the event site and may result in disciplinary action by the Trial Committee. Entries may be refused in the future for previous misuse of the motel facilities.

Complaints lodged against any exhibitor will be under the auspices of our Trial Committee and reported to the AKC. This is an AKC-supported measure.

PLEASE REMEMBER: Hotels do not have to allow us to keep our dogs in the rooms. We are all responsible for insuring future pet acceptance at our favorite hotels. Please clean up after your dogs (inside and outside), keep them quiet so as not to disturb other guests, and generally be considerate of others. We all want to continue to have nice places to stay when we travel with our dogs.

COVID GUIDELINES

- We will be following all state, local and facility guidelines. (Keep in mind, these are constantly changing)
- Continue to practice social distancing consistent with current guidelines
- Everyone is **required** to wear masks at all times (except when running your dog.) Masks will be provided for anyone wanting one.
- Disposable gloves will be available for course builders, ring crew, & any other worker that desires them.
- Hand sanitizer and disinfecting spray bottles will be available throughout the arena.
- Bathrooms will be stocked with plenty of soap, hand sanitizer, and disinfecting spray bottles
- There will be no common use writing utensils. Please bring your own. The running orders will be on poster board. You will be allowed to check in before the board is placed at ringside, but you will have to use your own pen.
- We will be designating more crating room than in past years, so please try to keep crating spaces 6 ft apart
- There will be no MACH cakes or community-shared food items at the trial. There will be water & soft drinks provided for workers
- There will be no self-serve ribbons. We will have a volunteer putting the sticker on the ribbons for you. If you only want your sticker, you will be asked to take the ribbons, peel your sticker off, and then put the ribbons in a designated "return box". PLEASE NOTE: If you do not pick up your ribbon (stickers) each day, they will be put away. No ribbons from the previous days will be left out on the table. You will have to ask the ribbon volunteer to find yours for you.
- There will be a 6ft area marked off around the gate steward. Please do not go into this area! Once the running order is placed at the ring entrance, and the gate steward is in their designated space, he/she will be the only one to mark on the board. The gate steward needs to have their own pen to mark on the board. The gate steward will be in charge of getting the dogs in the correct order to enter the ring AND will open the gate for you. There will be a designated area for "on deck", in-the-hole", & "3rd in line."
- Leash runner will use a "grabber" to pick up leashes. Both the "grabber" and chair where the leash is placed will be disinfected after each run. Note: exhibitors may put their leash in their pocket or "wear" them (i.e. clip like a belt around the waist) during their run. Leash must fully fit in their pocket. Please be aware that if the dog grabs the leash while running this will be scored as an "E".
- There will be a person designated to open the EXIT gate for you. They will not open the gate until your dog is securely on leash or fully harnessed.
- Course builders will be provided disposable gloves. They should make sure and wipe down the measuring wheel before and after use. They should not share course building maps with others.
- The scribe will place the score sheets in a basket. The score sheet runner will take the basket over to the trial secretaries, rather than handling each individual sheet
- Timer and scribe will sit at opposite ends of the table. Scribe should use their own pen for marking the scribe sheets. The table, chairs, and timing console will be wiped down with disinfectant after each group of workers.
- Briefings will be done over the PA system. Exhibitors do not have to come into the ring for briefing. Briefings will not be required for Excellent/Master level classes.
- There will be no measuring of dogs. If an AKC rep happens to come to the trial, they can choose to either measure dogs or not. If they do, the devices and table will be wiped down between dogs and they must sanitize their hands between dogs
- Walk-thru group sizes will be reduced. There will be a maximum of 25 people per walk-thru.
- Results will be posted on the walls (rather than in a single notebook). Please do not crowd around the results area! Daily results will also be posted each evening at www.ntxagility.com.
- Course maps will be posted per AKC Agility Regulations. There will be no printed copies of course maps for exhibitors. Exhibitors may take a picture of the posted course maps. In addition to the course maps that are posted at the trial site, the trial secretary will post the maps each day to her website and email a link to everyone.



Rings will run alternately

Walk-Throughs Can Be Split At the Judge's Discretion; Lunch Break at the Judge's Discretion

South Plains Obedience Training Club of Lubbock JUDGING SCHEDULE

Class counts are contingent on move-ups not yet received.

ALL TIMES (except for the starting time for the first class each day) ARE ESTIMATES. Times are listed as a courtesy only to give competitors an IDEA of when the classes/WALK THRU could begin. Exhibitors are responsible for being at the ring when their turn is called. Neither the Club nor the Judge will be responsible for the start times. Please plan your arrival accordingly.

Judge: Ms. Candy Nettles

FRIDAY, November 6, 2020 TOTAL 318 RUNS Judging starts at 11:00 A.M. BRIEFING AND 2 WALKS AT 10:40 AM		SATURDAY, November 7, 2020 TOTAL 350 RUNS Judging starts at 8:00 A.M. 3 WALK THRU START AT 7:30 AM		SUNDAY, November 8, 2020 TOTAL 349 RUNS Judging starts at 8:00 A.M. 2 WALKS THRU START AT 7:40 AM	
ALL TIMES LISTED FOR WALK-THRU ARE APPROXIMATE (except for starting time for the first class each day)					
SMALL-TO-TALL		TALL-TO-SMALL		SMALL-TO-TALL	
11:00 AM– Ring 2 EX/MAS FAST	Run 35 dogs: 8"(2), 12"(5), 16"(12), 20"(12), 24"(4)	8:00 AM – Ring 1 T2B	* Run 23 dogs: 24"(7), 20"(16) Ring Crew Change * Run 31 Dogs: 16"(20), 12"(6), 8"(5)	8:00 AM – Ring 1 T2B	* Run 26 dogs: 8"(4), 12"(5), 16"(17) Ring Crew Change * Run 23 Dogs: 20"(16), 24"(7)
11:35 AM-Ring 2 OPEN/NOV FAST-ALL TOGETHER	Briefing/Walk/Run 24 Dogs: 8"(1), 12"(6), 16"(5), 20"(9), 24"(3)	9:00 PM - Ring 2 Premier JWW	* Walk/Run 22 dogs; 24C(1), 24"(1), 20"(12),16"(7), 12"(1)	8:55 AM–Ring 2 EX/MAS FAST	Briefing/Walk/Walk/Run 36 dogs: 8"(2), 12"(5), 16"(12), 20"(13), 24"(4)
12:25 PM – Ring 1 T2B	* Walk/Walk/Run 46 dogs; 8"(4), 12"(7), 16"(13), 20"(15), 24"(7)	9:35 AM - Ring 1 Premier STD	* Walk/Run 23 dogs; 24C(1), 24"(1), 20"(14),16"(5), 12"(2)	9:55 AM-Ring 2 OPEN/NOV FAST ALL TOGETHER	Briefing/Walk/Run 21 Dogs: 8"(1), 12"(6), 16"(4), 20"(7), 24"(3)
1:35 PM - Ring 2 Premier JWW	* Walk/Run 19 dogs; 12"(1), 16"(3), 20"(13), 24"(1), 24C(1)	10:10 AM - Ring 2 Exc/Mas JWW	* Walk/Walk/Run 32 dogs: 24C(1), 24"(5), 20"(26) * Walk/Walk/Walk/Run 62 Dogs: 16"(34), 12"(20), 8"(7), 4"(1)	10:35 AM - Ring 1 Exc/Mas STD	* Walk/Walk/Walk/Run 53 dogs: 4"(1), 8"(5), 12"(18), 16"(29) * Walk/Run 35 Dogs: 20"(29), 24"(5), 24C(1)
2:10 PM - Ring 1 Premier STD	* Walk/Run 22 dogs; 12"(2), 16"(6), 20"(12), 24"(1), 24C(1)	12:45 PM - Ring 1 Exc/Mas STD	* Walk/Walk/Run 36 dogs: 24C(1), 24"(6), 20"(29) * Walk/Walk/Walk/Run 54 Dogs: 16"(31), 12"(17), 8"(5), 4"(1)	1:15 PM – Ring 2 Exc/Mas JWW	* Walk/Walk/Walk/Run 61 dogs: 4"(1), 8"(7), 12"(21), 16"(32) * Walk/Run 31 Dogs: 20"(26), 24"(4), 24C(1)
3:25 PM – Ring 2 Exc/Mas JWW	* Walk/Walk/Walk/Run 57 dogs: 4"(1), 8"(6), 12"(20), 16"(30) * Walk/Run 32 Dogs: 20"(26), 24"(5), 24C(1)	3:40 PM - Ring 2 Open JWW	Briefing/Walk/Run 15 dogs; 24"(4), 0"(7),16"(1), 12"(2), 8"(1)	3:50 PM - Ring 1 Open STD	Briefing/Walk/Run 13 dogs: 8"(2), 12"(1), 16"(2), 20"(4), 24"(4)
5:15 PM - Ring 1 Exc/Mas STD	* Walk/Walk/Run 49 dogs: 4"(1), 8"(6), 12"(15), 16"(27) * Walk/Walk/Run 34 Dogs: 20"(27), 24"(6), 24C(1)	4:20 PM - Ring 1 Open STD	Briefing/Walk/Run 13 dogs; 24"(4), 20"(4),16"(2), 12"(1), 8"(2)	4:30 PM - Ring 2 Open JWW	Briefing /Walk/Run 14 dogs: 8"(1), 12"(1), 16"(1), 20"(7), 24"(4)
WALK/RUN = 1 WALK THRU WALK/WALK/RUN = 2 WALK THRU WALK/WALK/WALK/RUN = 3 WALK THRU * = NO BRIEFING		5:00 PM Ring 2 Novice JWW	Briefing/Walk/Run 19 dogs; 24"(1), 20"(10),16"(4), 12"(1), 8"(3)	5:05 PM - Ring 1 Novice STD	Briefing/Walk/Run 18 dogs: 8"(3), 12"(2), 16"(3), 20"(10)
		5:40 PM - Ring 1 Novice STD	Briefing/Walk/Run 20 dogs; 20"(10),16"(4), 12"(3), 8"(3)	5:50 PM - Ring 2 Novice JWW	Briefing/Walk/Run 18 dogs: 8"(3), 12"(1), 16"(3), 20"(10), 24"(1)

Visit <http://www.ntxagility.com> for complete results each evening during the trial



MOTEL/RV PARK INFORMATION

Please inform management of your dogs when you book reservations and when you register.

NOTE: The club cannot guarantee that the hotels/motels listed below accept dogs. Please check regarding rates and dog acceptance policy when making reservations.

Motel dog regulations and fees may change without notice. The club cannot be responsible for any changes.

Arbor Inn and Suites, 5310 Englewood Ave, Lubbock, TX 79424 806 722-2726

A block of 30 rooms at a special rate has been reserved. You must call the hotel directly **and mention the block of rooms for SPOTC Agility Trial** to get the special rate. There is no pet fee. They serve a continental breakfast. Location is very close to the show site. **The cut-off date for reservations is October 22**

Room Prices: Double Queen beds (with a sofa bed in the room also) \$80

King Bed (just a single king bed—no sofa bed) \$80

Note: a \$25 incidental charge will be put on your credit card when you check in but will be refunded when you check out if there are no damages. Regina is the manager.

LaQuinta, 601 Ave Q, Lubbock, TX 79401.....	806-763-9441
La Quinta Inn & Suites, 5006 Auburn St, Lubbock, TX 79416.....	806.749.1600
La Quinta Inn & Suites West/Medical Center, 4115 Marsha Sharp Fwy, Lubbock TX 79407	806.792.0065
Motel 6, 1-27 & 66th Street, Lubbock TX79412.....	806.745-5541
Best Western Lubbock Windsor Inn, 5410 I- 27, Lubbock, TX 79404.....	806.762.8400
Super 8 Civic Center. 501 Avenue Q, Lubbock, TX 79401.....	806.762.8726
Four Points Hotel Sheraton, 505 Avenue Q, Lubbock, TX 79401.....	806. 747.0171
Days Inn, 2401 - 4th Street, Lubbock, TX, 79415.....	806.747.7111
Studio 6 Motel, 4521 Marsha Sharp Frwy, Lubbock, TX 79401.....	806-687-6666 or 888.897.0202

RV INFORMATION

There are 29 Electric-only hookups at the show site available for \$35/night. Call the arena office at 806-792-4682 or email Patsy at patsy.mcbee@ttu.edu for reservations. First come, first served. The Arena Secretary will confirm if you have a reservation. No confirmation, no reservation.

Contact person is Jessica at Jessica.I.stanton@ttu.edu



Loop 289 RV Park, 3436 West Loop 289, Lubbock, TX 79404	806.792.4348
KOA Kamp ground, 5502 County Road 6300, Lubbock, TX 79416	806.762.8653
(2.5 mi west of Loop 289 on Hwy 84)	

IMPORTANT INFO...



Exhibitors are responsible for cleaning up after their dogs immediately on hotel/motel and show grounds. Motels/hotels require that dogs be crated when unattended; no bathing or grooming of dogs in guest rooms. Exhibitors/handlers are responsible for any damages to motels/hotels or the event site and may result in disciplinary action by the Trial Committee. Entries may be refused in the future for previous misuse of the motel facilities. This is an AKC-supported measure.

PLEASE REMEMBER: Hotels do not have to allow us to keep our dogs in the rooms. We are all responsible for insuring future pet acceptance at our favorite hotels. Please clean up after your dogs (inside and outside), keep them quiet so as not to disturb other guests, and generally be considerate of others. We all want to continue to have nice places to stay when we travel with our dogs.